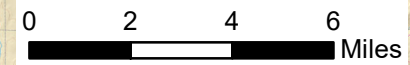


South Sugarloaf Fire
 NV-ECFX-010299
 Aviation Map
 NAD 83 11N
 Aug 28, 2018
 232,859 Acres

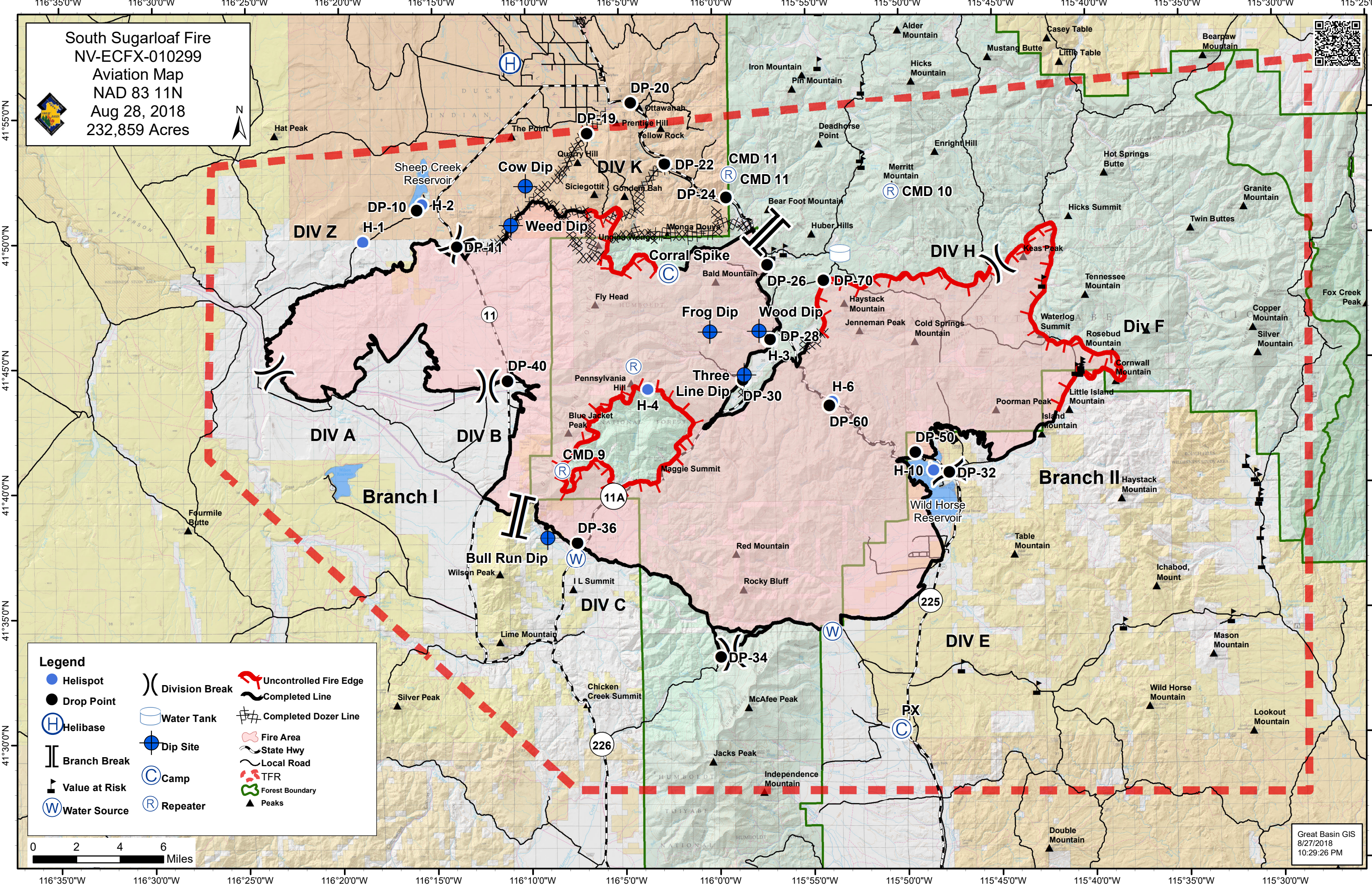


Legend

Helispot	Drop Point	Uncontrolled Fire Edge
Helibase	Dip Site	Completed Line
Branch Break	Water Source	Completed Dozer Line
Value at Risk	Camp	Fire Area
Water Source	Repeater	State Hwy
		Local Road
		TFR
		Forest Boundary
		Peaks



Great Basin GIS
 8/27/2018
 10:29:26 PM



Type	Label	Lat_WGS84	Long_WGS84
Camp	Corral Spike	41° 48.669' N	116° 02.446' W
Camp	PX	41° 30.348' N	115° 50.306' W
Dip Site	Wood Dip	41° 46.339' N	115° 57.640' W
Dip Site	Bull Run Dip	41° 38.149' N	116° 09.019' W
Dip Site	Three Line Dip	41° 44.590' N	115° 58.459' W
Dip Site	Frog Dip	41° 46.330' N	116° 00.259' W
Dip Site	Weed Dip	41° 50.659' N	116° 10.840' W
Dip Site	Cow Dip	41° 52.230' N	116° 10.050' W
Drop Point	DP40	41° 44.437' N	116° 11.099' W
Drop Point	DP10	41° 51.302' N	116° 15.880' W
Drop Point	DP-19	41° 54.312' N	116° 06.733' W
Drop Point	DP-11	41° 49.826' N	116° 13.746' W
Drop Point	DP-22	41° 53.059' N	116° 02.596' W
Drop Point	DP-28	41° 45.993' N	115° 57.060' W
Drop Point	DP-30	41° 44.392' N	115° 58.527' W
Drop Point	DP-24	41° 51.693' N	115° 59.323' W
Drop Point	DP-20	41° 55.519' N	116° 04.384' W
Drop Point	DP-26	41° 48.978' N	115° 57.162' W
Drop Point	DP-36	41° 37.933' N	116° 07.441' W
Drop Point	DP-34	41° 33.316' N	115° 59.869' W
Drop Point	DP-32	41° 40.600' N	115° 47.575' W
Drop Point	DP-60	41° 43.331' N	115° 53.936' W
Drop Point	DP-50	41° 41.418' N	115° 49.376' W
Drop Point	DP-70	41° 48.318' N	115° 54.136' W
Hellbase		41° 57.161' N	116° 10.806' W
Helispot	H3	41° 45.984' N	115° 57.165' W
Helispot	H2	41° 51.515' N	116° 15.614' W
Helispot	H1	41° 50.048' N	116° 18.787' W
Helispot	H4	41° 44.055' N	116° 03.619' W
Helispot	H-6	41° 43.481' N	115° 53.782' W
Helispot	H-10	41° 40.689' N	115° 48.428' W
Incident Command Post		42° 00.331' N	116° 08.937' W
Mobile Weather Unit	Long Hollow RAWWS	41° 32.280' N	116° 13.080' W
Mobile Weather Unit	IRAWS 33	41° 34.200' N	115° 51.456' W
Mobile Weather Unit	IRAWS 34	41° 52.608' N	115° 59.160' W
Repeater	CMD 9	41° 40.834' N	116° 08.217' W
Repeater	CMD 10	41° 51.875' N	115° 50.509' W
Repeater	CMD 11	41° 44.976' N	116° 04.366' W
Repeater	CMD 11	41° 52.611' N	115° 59.166' W
Water Source		41° 37.321' N	116° 07.537' W
Water Source		41° 34.303' N	115° 53.926' W
Water Tank		41° 49.416' N	115° 53.268' W