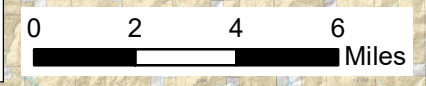

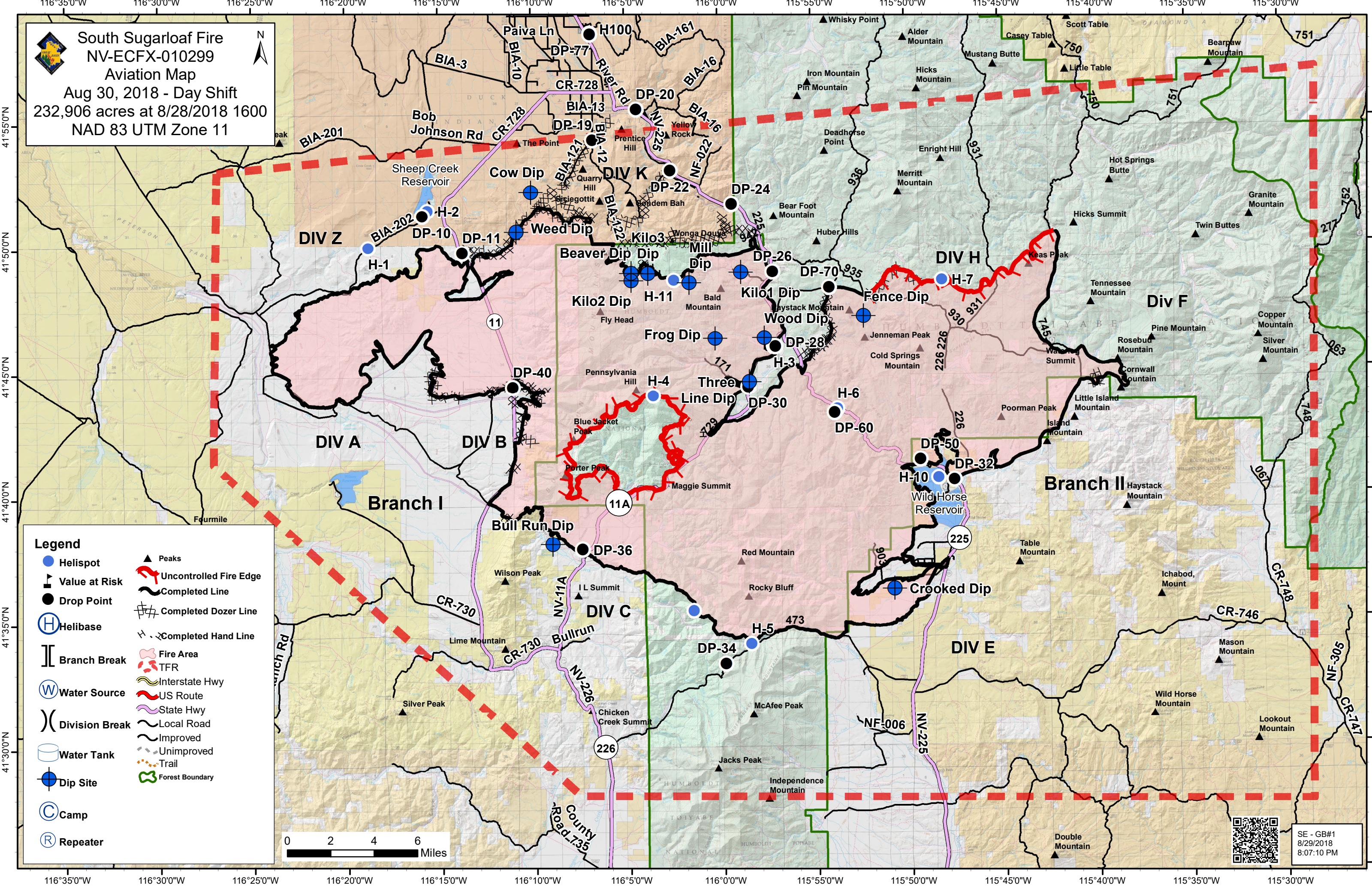

South Sugarloaf Fire
 NV-ECFX-010299
 Aviation Map
 Aug 30, 2018 - Day Shift
 232,906 acres at 8/28/2018 1600
 NAD 83 UTM Zone 11

Legend

Helispot	Peaks
Value at Risk	Uncontrolled Fire Edge
Drop Point	Completed Line
Helibase	Completed Dozer Line
Branch Break	Completed Hand Line
Water Source	Fire Area
Division Break	TFR
Water Tank	Interstate Hwy
Dip Site	US Route
Camp	State Hwy
Repeater	Local Road
	Improved
	Unimproved
	Trail
	Forest Boundary




 SE - GB#1
 8/29/2018
 8:07:10 PM



South Sugarloaf Incident Points			
Type	Label	Lat_WGS84	Long_WGS84
Camp	Corral Spike	41° 48.669' N	116° 02.446' W
Camp	PX	41° 30.348' N	115° 50.306' W
Dip Site	Beaver Dip	41° 48.967' N	116° 04.720' W
Dip Site	Bull Run Dip	41° 38.149' N	116° 09.019' W
Dip Site	Crooked Dip	41° 36.260' N	115° 50.830' W
Dip Site	Cow Dip	41° 52.230' N	116° 10.050' W
Dip Site	Fence Dip	41° 47.170' N	115° 52.320' W
Dip Site	Frog Dip	41° 46.330' N	116° 00.259' W
Dip Site	Kilo1 Dip	41° 48.967' N	115° 58.858' W
Dip Site	Kilo2 Dip	41° 48.670' N	116° 04.720' W
Dip Site	Kilo3 Dip	41° 48.948' N	116° 03.818' W
Dip Site	Mill Dip	41° 48.570' N	116° 01.620' W
Dip Site	Three Line Dip	41° 44.590' N	115° 58.459' W
Dip Site	Weed Dip	41° 50.659' N	116° 10.840' W
Dip Site	Wood Dip	41° 46.339' N	115° 57.640' W
Drop Point	DP-10	41° 51.302' N	116° 15.880' W
Drop Point	DP-11	41° 49.826' N	116° 13.746' W
Drop Point	DP-19	41° 54.312' N	116° 06.733' W
Drop Point	DP-20	41° 55.519' N	116° 04.384' W
Drop Point	DP-22	41° 53.059' N	116° 02.596' W
Drop Point	DP-24	41° 51.693' N	115° 59.323' W
Drop Point	DP-26	41° 48.978' N	115° 57.162' W
Drop Point	DP-28	41° 45.993' N	115° 57.060' W
Drop Point	DP-30	41° 44.392' N	115° 58.527' W
Drop Point	DP-32	41° 40.600' N	115° 47.575' W
Drop Point	DP-34	41° 33.316' N	115° 59.869' W
Drop Point	DP-36	41° 37.933' N	116° 07.441' W
Drop Point	DP-40	41° 44.437' N	116° 11.099' W
Drop Point	DP-50	41° 41.418' N	115° 49.376' W
Drop Point	DP-60	41° 43.331' N	115° 53.936' W
Drop Point	DP-70	41° 48.338' N	115° 54.162' W
Helibase		41° 57.161' N	116° 10.806' W
Helispot	H-1	41° 50.048' N	116° 18.787' W
Helispot	H-2	41° 51.515' N	116° 15.614' W
Helispot	H-3	41° 45.984' N	115° 57.165' W
Helispot	H-4	41° 44.055' N	116° 03.619' W
Helispot	H-5	41° 34.105' N	115° 58.595' W
Helispot	H-6	41° 43.481' N	115° 53.782' W
Helispot	H-7	41° 48.590' N	115° 48.140' W
Helispot	H-10	41° 40.689' N	115° 48.428' W
Helispot	H-11	41° 48.670' N	116° 02.460' W
Incident Command Post		41° 58.588' N	116° 06.961' W
Mobile Weather Unit	IRAWS 33	41° 34.200' N	115° 51.456' W
Mobile Weather Unit	IRAWS 34	41° 52.608' N	115° 59.160' W
Mobile Weather Unit	IRAWS 36	41° 49.887' N	115° 40.493' W
Mobile Weather Unit	IRAWS 37	41° 51.991' N	115° 45.832' W
Mobile Weather Unit	Long Hollow RAWs	41° 32.280' N	116° 13.080' W
Mobile Weather Unit		41° 53.510' N	115° 51.471' W
Repeater	CMD 8	41° 46.149' N	115° 36.996' W
Repeater	CMD 9	41° 40.834' N	116° 08.217' W
Repeater	CMD 10	41° 51.875' N	115° 50.509' W
Repeater	CMD 11	41° 52.611' N	115° 59.166' W
Repeater		41° 44.976' N	116° 04.366' W