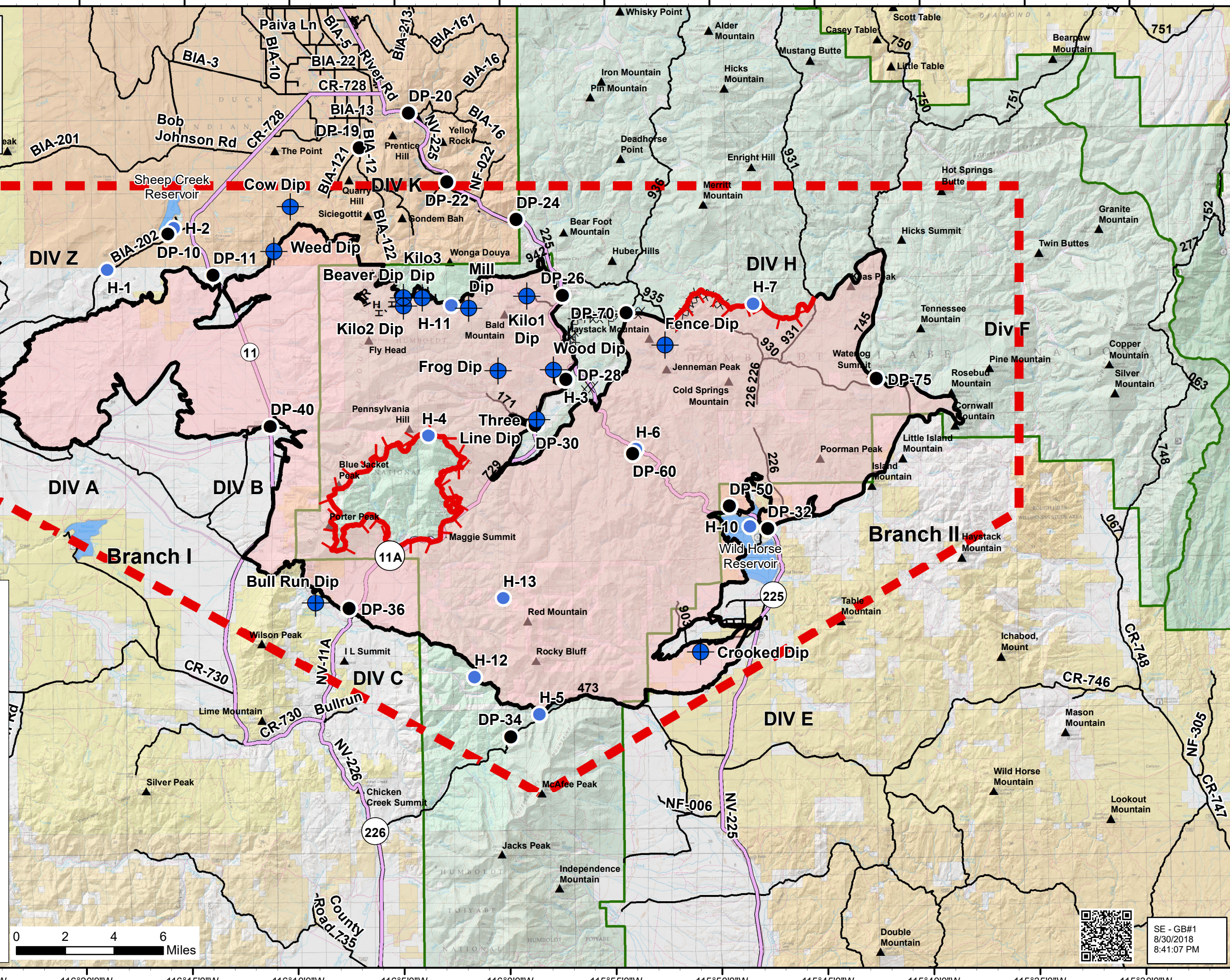


South Sugarloaf Fire
 NV-ECFX-010299
 Aviation Map
 Aug 31, 2018 - Day Shift
 232,906 acres at 8/29/2018 1600
 NAD 83 UTM Zone 11

Legend

Helispot	Peaks
Value at Risk	Uncontrolled Fire Edge
Drop Point	Completed Line
Helibase	Completed Dozer Line
Branch Break	Completed Hand Line
Water Source	Fire Area
Division Break	TFR
Water Tank	Interstate Hwy
Dip Site	US Route
Camp	State Hwy
Repeater	Local Road
	Improved
	Unimproved
	Trail
	Forest Boundary




 SE - GB#1
 8/30/2018
 8:41:07 PM

South Sugarloaf Incident Points			
Type	Label	Lat WGS84	Long WGS84
Dip Site	Beaver Dip	N41° 48.967'	W116° 4.721'
Dip Site	Bull Run Dip	N41° 38.150'	W116° 9.020'
Dip Site	Cow Dip	N41° 52.230'	W116° 10.050'
Dip Site	Crooked Dip	N41° 36.260'	W115° 50.830'
Dip Site	Fence Dip	N41° 47.170'	W115° 52.320'
Dip Site	Frog Dip	N41° 46.330'	W116° 0.260'
Dip Site	Kilo1 Dip	N41° 48.967'	W115° 58.859'
Dip Site	Kilo2 Dip	N41° 48.670'	W116° 4.721'
Dip Site	Kilo3 Dip	N41° 48.948'	W116° 3.819'
Dip Site	Mill Dip	N41° 48.570'	W116° 1.620'
Dip Site	Three Line Dip	N41° 44.590'	W115° 58.460'
Dip Site	Weed Dip	N41° 50.660'	W116° 10.840'
Dip Site	Wood Dip	N41° 46.340'	W115° 57.640'
Drop Point	DP-10	N41° 51.303'	W116° 15.880'
Drop Point	DP-11	N41° 49.826'	W116° 13.747'
Drop Point	DP-19	N41° 54.312'	W116° 6.734'
Drop Point	DP-20	N41° 55.520'	W116° 4.385'
Drop Point	DP-22	N41° 53.059'	W116° 2.597'
Drop Point	DP-24	N41° 51.693'	W115° 59.324'
Drop Point	DP-26	N41° 48.978'	W115° 57.162'
Drop Point	DP-28	N41° 45.993'	W115° 57.060'
Drop Point	DP-30	N41° 44.392'	W115° 58.527'
Drop Point	DP-32	N41° 40.600'	W115° 47.575'
Drop Point	DP-34	N41° 33.317'	W115° 59.870'
Drop Point	DP-36	N41° 37.934'	W116° 7.442'
Drop Point	DP-40	N41° 44.437'	W116° 11.099'
Drop Point	DP-50	N41° 41.419'	N41° 41.419'
Drop Point	DP-60	N41° 43.332'	N41° 43.332'
Drop Point	DP-70	N41° 48.339'	W115° 54.162'
Drop Point	DP-75	N41° 45.868'	W115° 42.338'
Helispot	H-1	N41° 50.048'	W116° 18.788'
Helispot	H-2	N41° 51.516'	W116° 15.614'
Helispot	H-3	N41° 45.985'	W115° 57.165'
Helispot	H-4	N41° 44.055'	W116° 3.619'
Helispot	H-5	N41° 34.105'	W115° 58.500'
Helispot	H-6	N41° 43.482'	N41° 43.482'
Helispot	H-7	N41° 48.590'	W115° 48.140'
Helispot	H-10	N41° 40.689'	W115° 48.428'
Helispot	H-11	N41° 48.670'	W116° 2.460'
Helispot	H-12	N41° 35.452'	W116° 1.551'
Helispot	H-13	N41° 38.247'	W116° 0.159'