

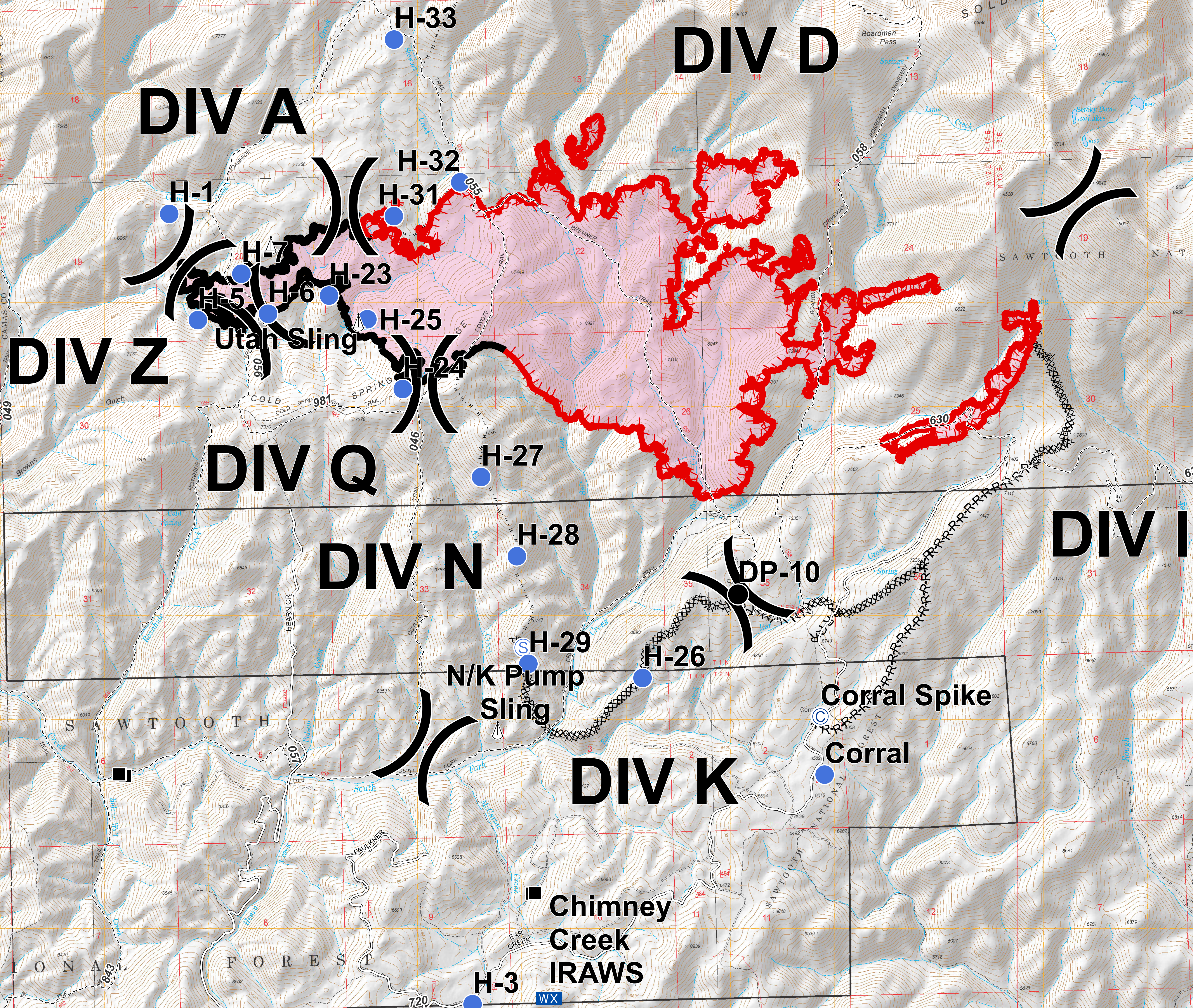
Stewart Creek Fire

ID-STF-000306

Briefing Map

September 4, 2018

2,234 Acres as of 9/2 2145 Hrs



Legend

- Structures
- ⊙ Camp
- Drop Point
- Helisport
- ⊕ Mobile Weather Unit
- ⊕ Sling Site
- ⊕ Staging Area
- ⌋ Division Break
- Roads
- - - Trail
- Uncontrolled Fire Edge
- Completed Line
- ⊘ Completed Dozer Line
- ⊘ Completed Hand Line
- - - Road as Completed Line
- Fire Perimeter

Datum: NAD83
GISS: JRP

