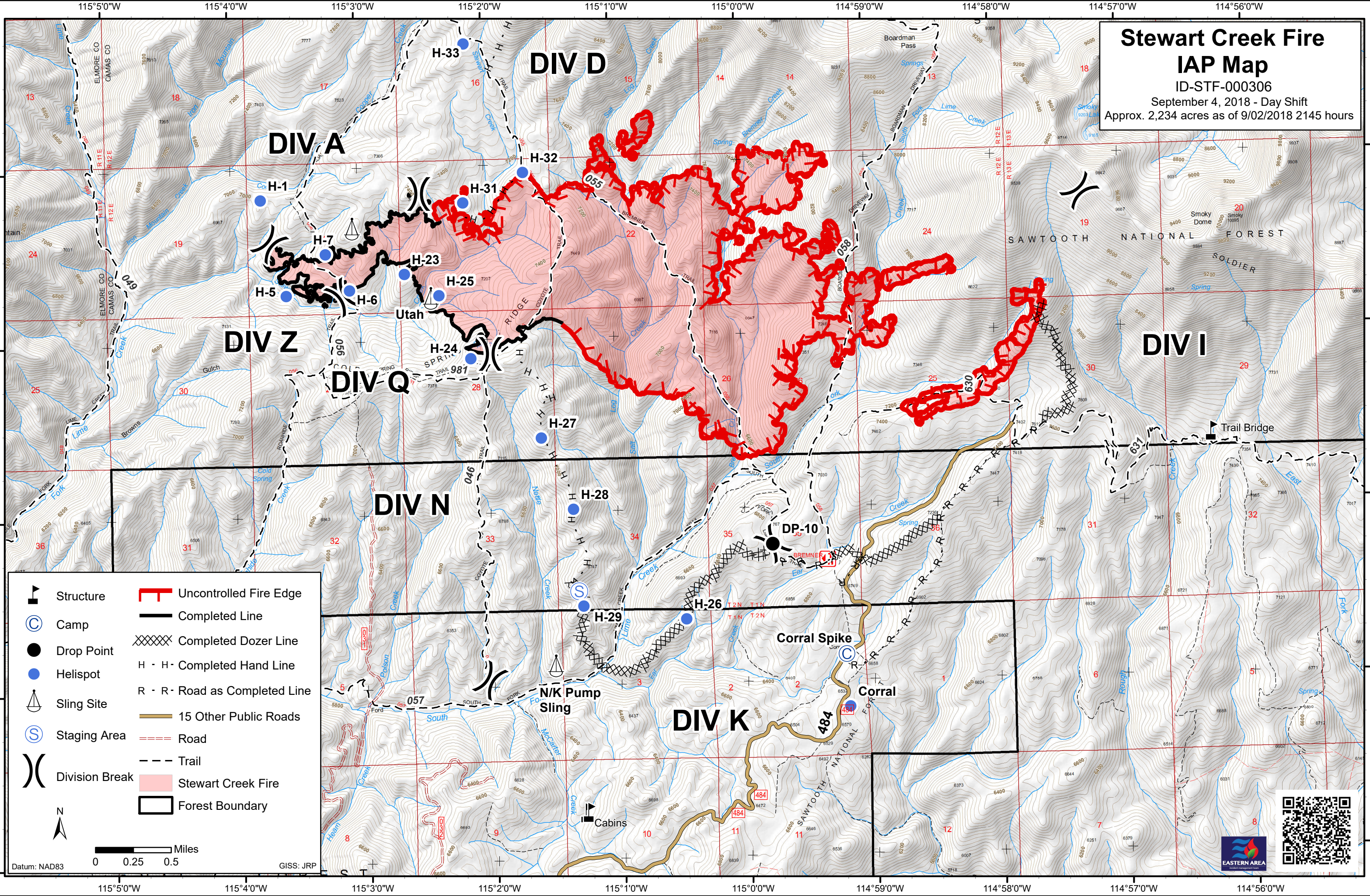


Stewart Creek Fire IAP Map

ID-STF-000306
 September 4, 2018 - Day Shift
 Approx. 2,234 acres as of 9/02/2018 2145 hours



| | | | |
|--|----------------|--|--------------------------------|
| | Structure | | Uncontrolled Fire Edge |
| | Camp | | Completed Line |
| | Drop Point | | Completed Dozer Line |
| | Helispot | | Completed Hand Line |
| | Sling Site | | R - R - Road as Completed Line |
| | Staging Area | | 15 Other Public Roads |
| | Division Break | | Road |
| | | | Trail |
| | | | Stewart Creek Fire |
| | | | Forest Boundary |

Datum: NAD83
 0 0.25 0.5 Miles
 GISS: JRP

