

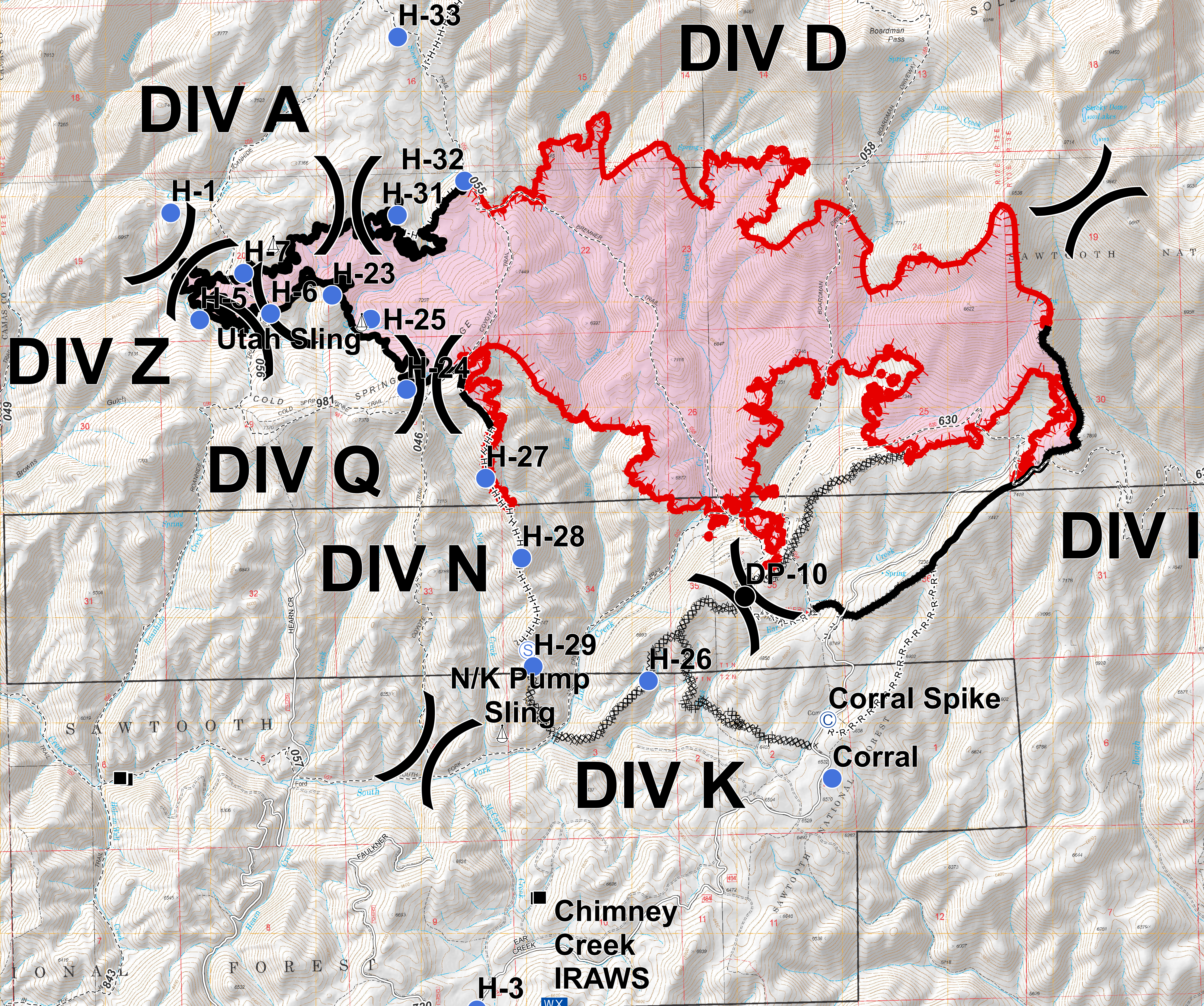
Stewart Creek Fire

ID-STF-000306

Briefing Map

September 6, 2018

3,310 Acres as of 9/5 1200 Hrs



Legend

- Structures
- ⊙ Camp
- Drop Point
- Helispot
- Ⓜ Mobile Weather Unit
- Ⓜ Sling Site
- Ⓜ Staging Area
- ⌋ Division Break
- Roads
- - - Trail
- Uncontrolled Fire Edge
- Completed Line
- Ⓜ Completed Dozer Line
- Ⓜ Completed Hand Line
- Ⓜ Road as Completed Line
- Fire Perimeter

Datum: NAD83
GISS: JRP

