

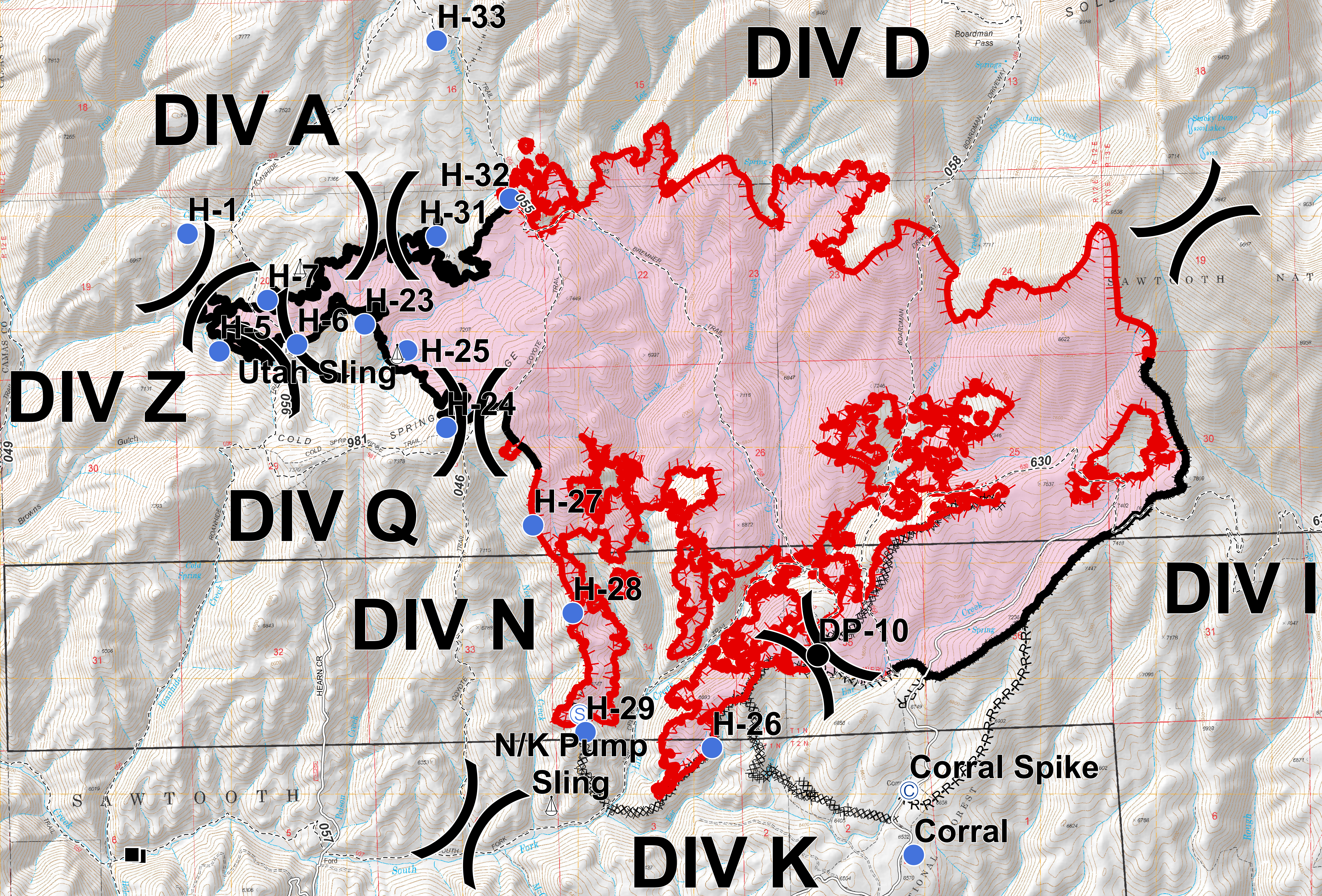
Stewart Creek Fire

ID-STF-000306

Planning/Situation Map

September 7, 2018

4,623 Acres as of 9/7 0145 Hrs



Legend

- Structures
- ⊙ Camp
- Drop Point
- Helipot
- ⊙ Mobile Weather Unit
- ⊙ Sling Site
- ⊙ Staging Area
- ⌋ Division Break
- Roads
- - - Trail
- Uncontrolled Fire Edge
- Completed Line
- ⊘ Completed Dozer Line
- · - · Completed Hand Line
- · - · Road as Completed Line
- Fire Perimeter

Datum: NAD83 GISS: JRP

