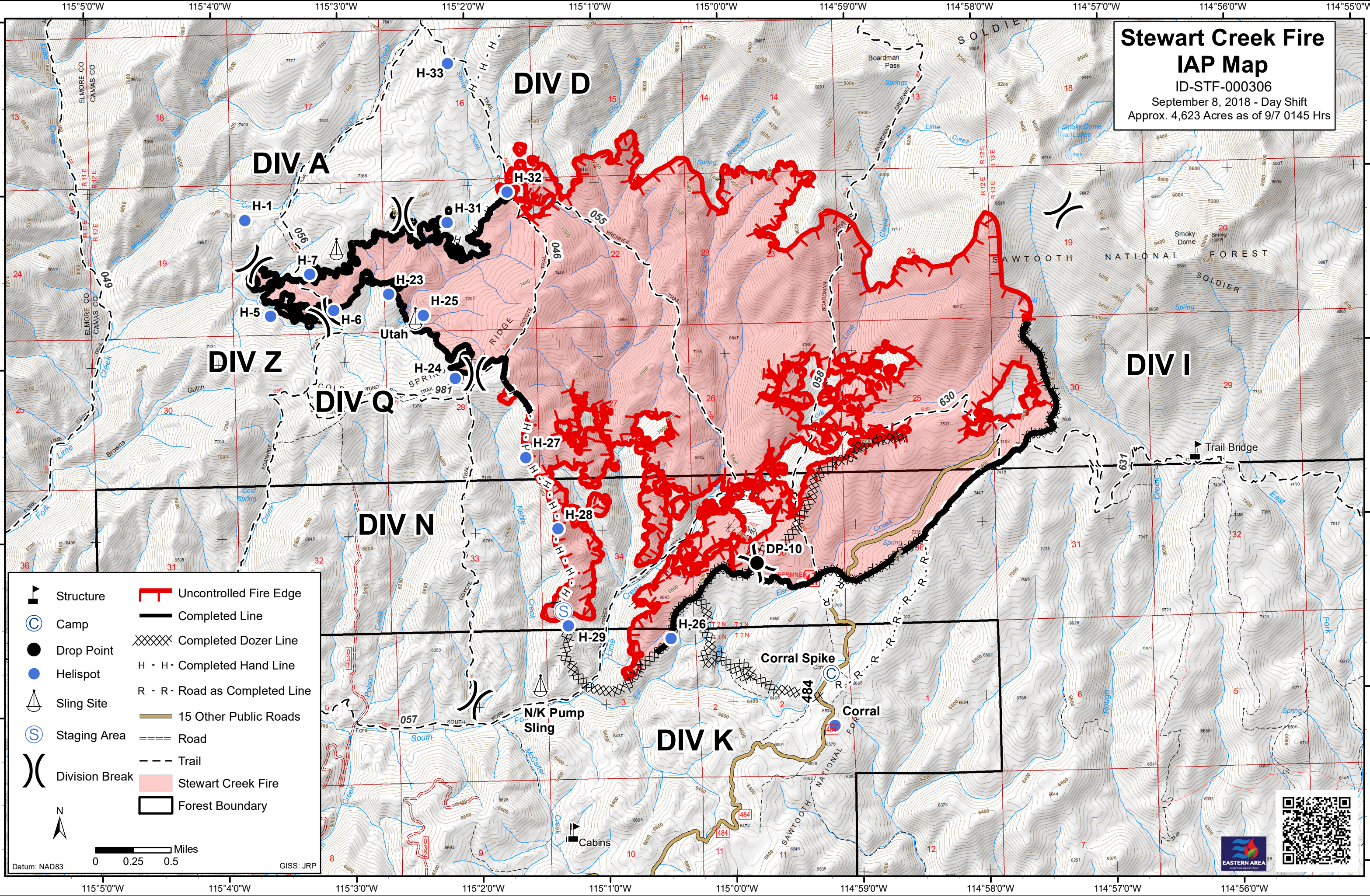


Stewart Creek Fire IAP Map

ID-STF-000306
 September 8, 2018 - Day Shift
 Approx. 4,623 Acres as of 9/7 0145 Hrs



	Structure		Uncontrolled Fire Edge
	Camp		Completed Line
	Drop Point		Completed Dozer Line
	Helispot		Completed Hand Line
	Sling Site		Road as Completed Line
	Staging Area		15 Other Public Roads
	Division Break		Road
			Trail
			Stewart Creek Fire
			Forest Boundary

Datum: NAD83

0 0.25 0.5 Miles

GISS: JRP

