

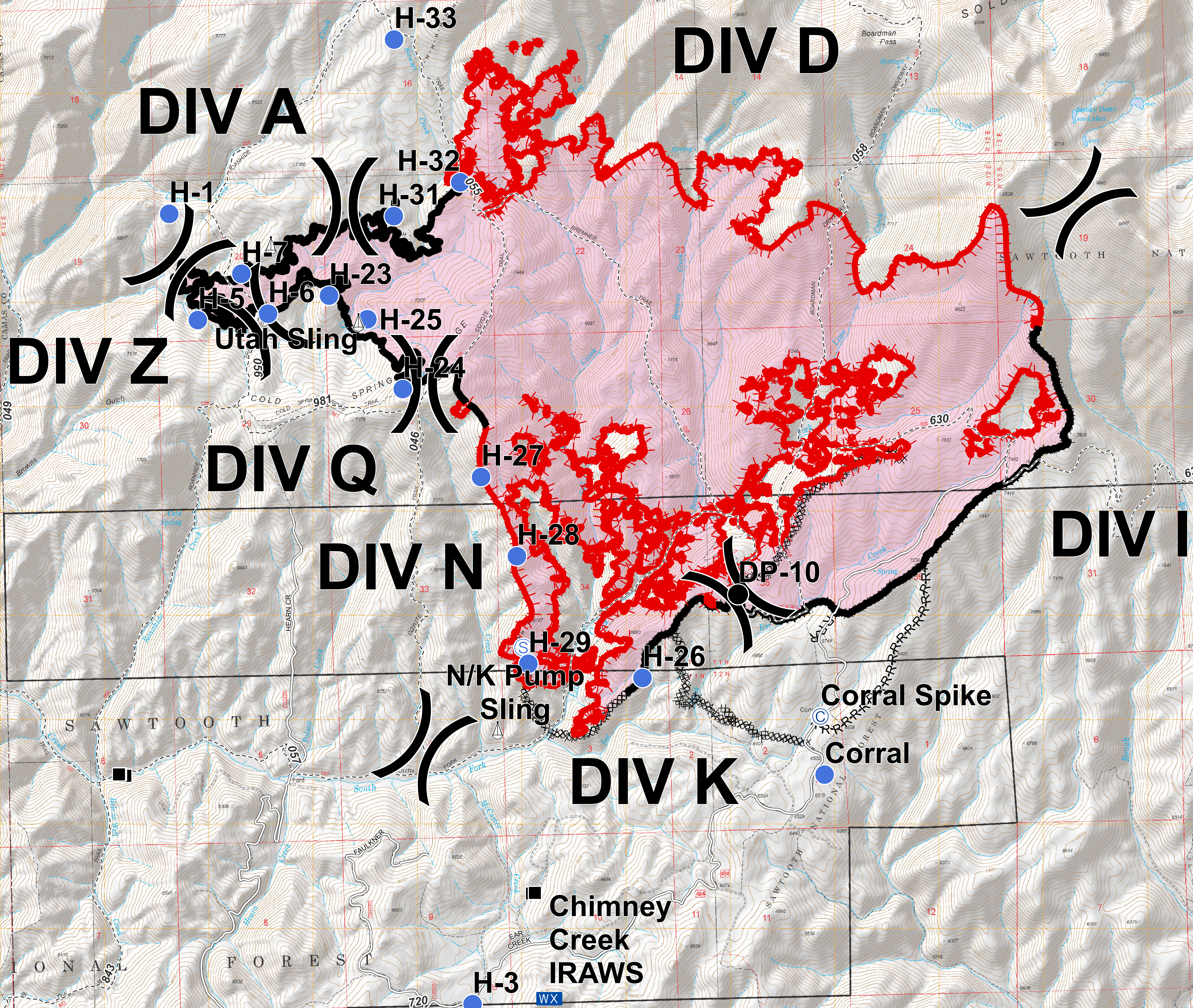
Stewart Creek Fire

ID-STF-000306

Planning/Situation Map

September 8, 2018

4,977 Acres as of 9/7 2300 Hrs



Legend

- Structures
- ⊙ Camp
- Drop Point
- Helispot
- ⊙ Mobile Weather Unit
- ⊙ Sling Site
- ⊙ Staging Area
- ⌋ Division Break
- Roads
- - - Trail
- Uncontrolled Fire Edge
- Completed Line
- ⊘ Completed Dozer Line
- ⊘ Completed Hand Line
- ⊘ Road as Completed Line
- Fire Perimeter

0 0.25 0.5 Miles

Datum: NAD83 GISS: JRP

