

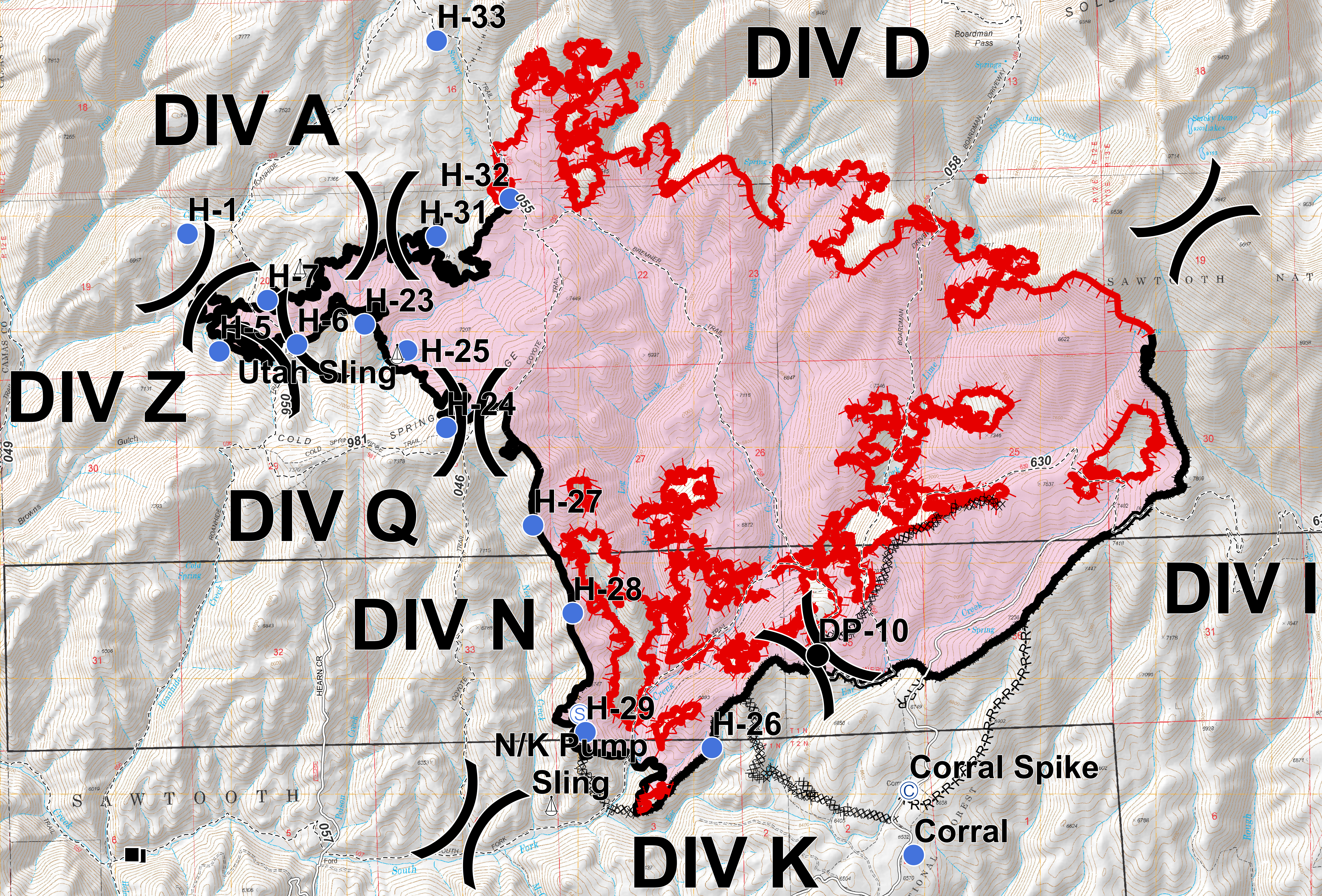
Stewart Creek Fire

ID-STF-000306

Planning/Situation Map

September 11, 2018

5,234 Acres as of 9/11 1200 Hrs



- Legend**
- Structures
 - ⊙ Camp
 - Drop Point
 - Helipot
 - ⊕ Mobile Weather Unit
 - ⊕ Sling Site
 - ⊕ Staging Area
 - ⌋ Division Break
 - Roads
 - - - Trail
 - Uncontrolled Fire Edge
 - Completed Line
 - ⊘ Completed Dozer Line
 - ⊘ Completed Hand Line
 - ⊘ Road as Completed Line
 - Fire Perimeter
- 0 0.25 0.5 Miles
- Datum: NAD83 GISS: JRP

