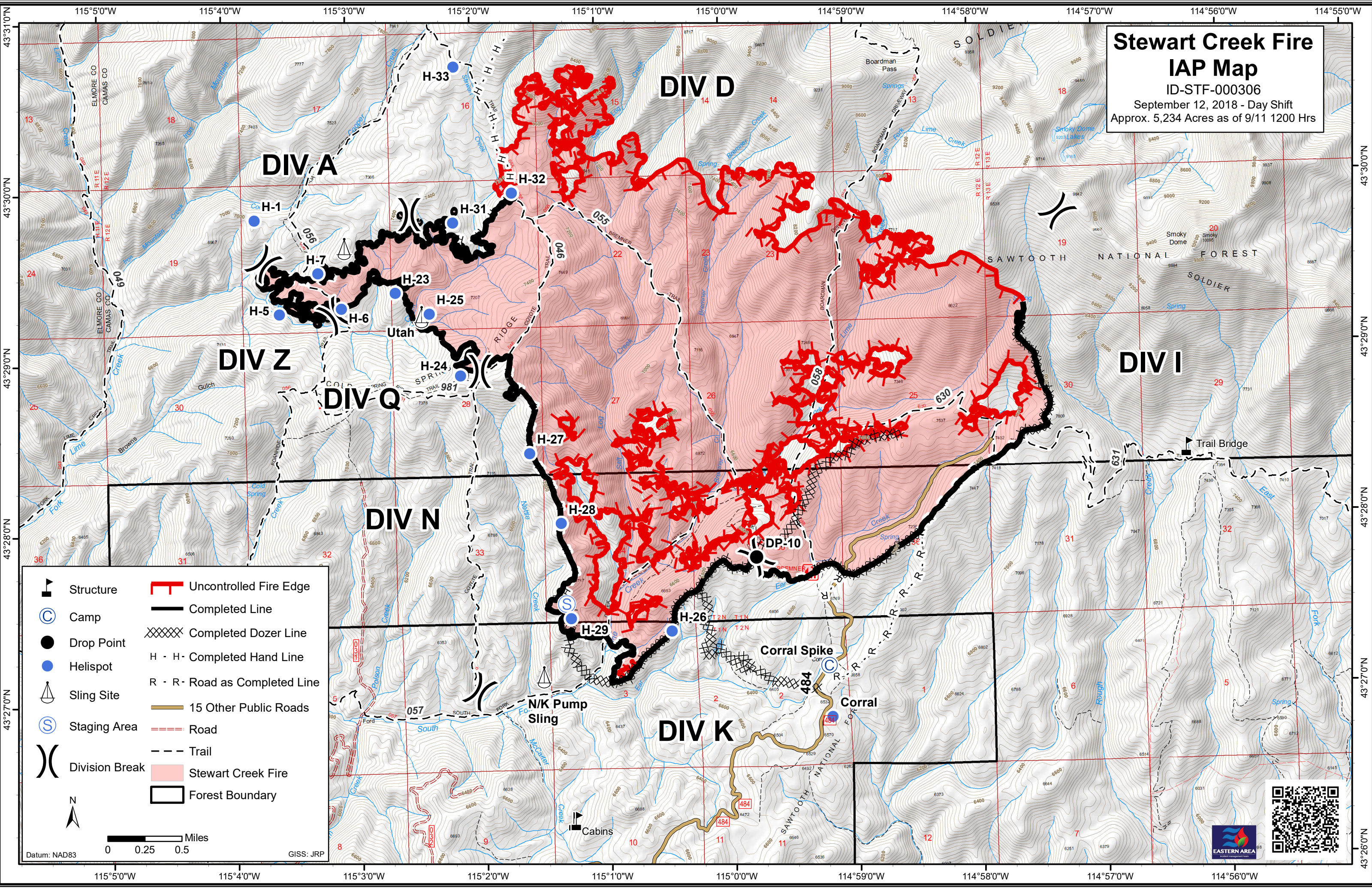


# Stewart Creek Fire IAP Map

ID-STF-000306  
 September 12, 2018 - Day Shift  
 Approx. 5,234 Acres as of 9/11 1200 Hrs



	Structure		Uncontrolled Fire Edge
	Camp		Completed Line
	Drop Point		Completed Dozer Line
	Helispot		Completed Hand Line
	Sling Site		Road as Completed Line
	Staging Area		15 Other Public Roads
	Division Break		Road
			Trail
			Stewart Creek Fire
			Forest Boundary

Datum: NAD83

0 0.25 0.5 Miles

GISS: JRP

