

115°4'0"W 115°3'45"W 115°3'30"W 115°3'15"W 115°3'0"W 115°2'45"W 115°2'30"W 115°2'15"W 115°2'0"W

43°29'45"N

43°29'45"N

43°29'30"N

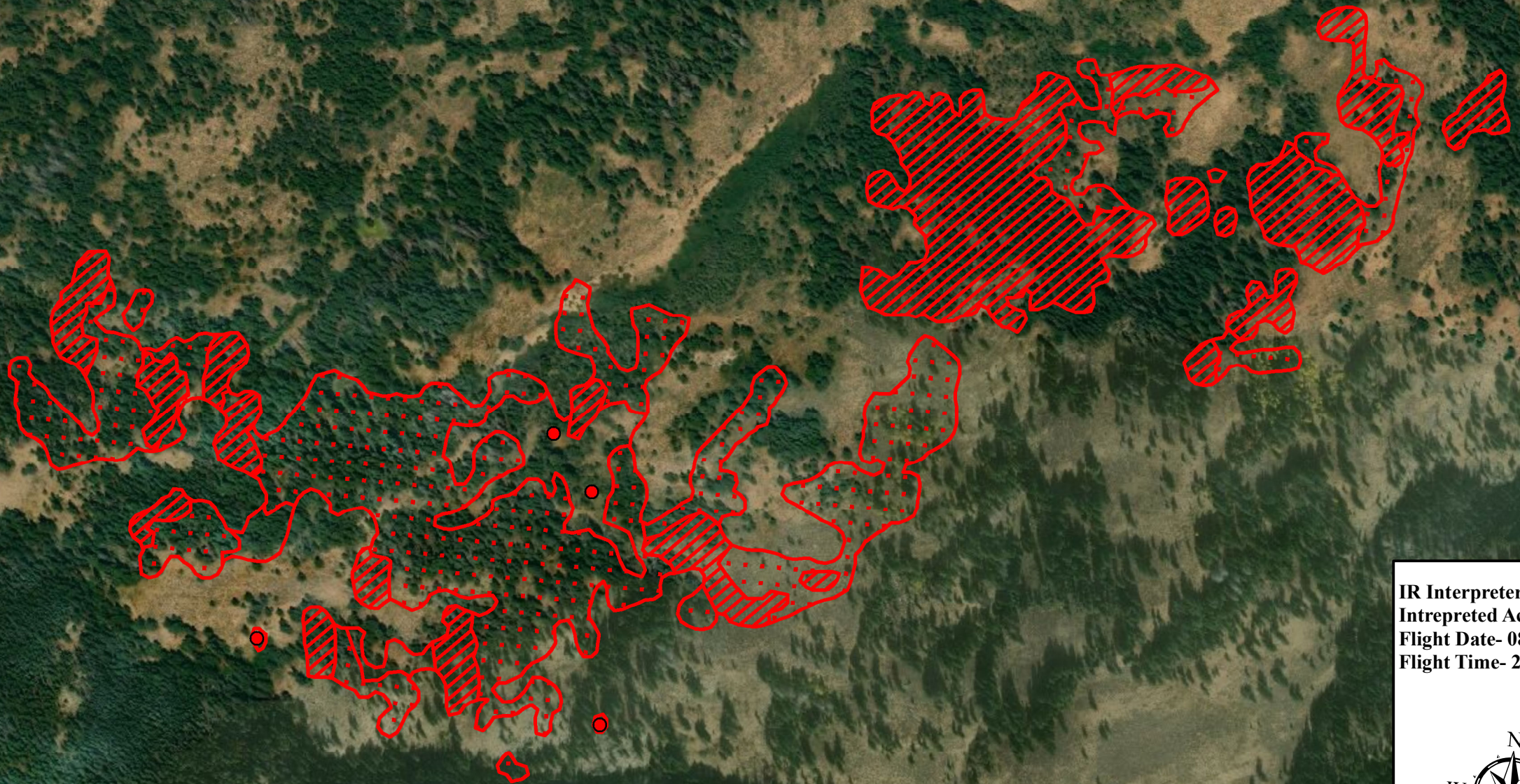
43°29'30"N

43°29'15"N


43°29'15"N





115°4'0"W 115°3'45"W 115°3'30"W 115°3'15"W 115°3'0"W 115°2'45"W 115°2'30"W 115°2'15"W 115°2'0"W

**Stewart Creek
ID-STF-000306
Infrared Red Heat Map**



IR Interpreter - Brian Banks
 Intrepreted Acres - 100
 Flight Date- 08-22-18
 Flight Time- 20:26



 Isolated Heat
 Intense Heat
 Scattered Heat
 Heat Perimeter

0 0.0375 0.075 0.15 0.225 0.3 Miles

Sources: Esri, Garmin, USGS, NPS, Source: Esri, DigitalGlobe, GeoEye, Earthstar Geographics, CNES/Airbus DS, USDA, USGS, AeroGRID, IGN, and the GIS User Community