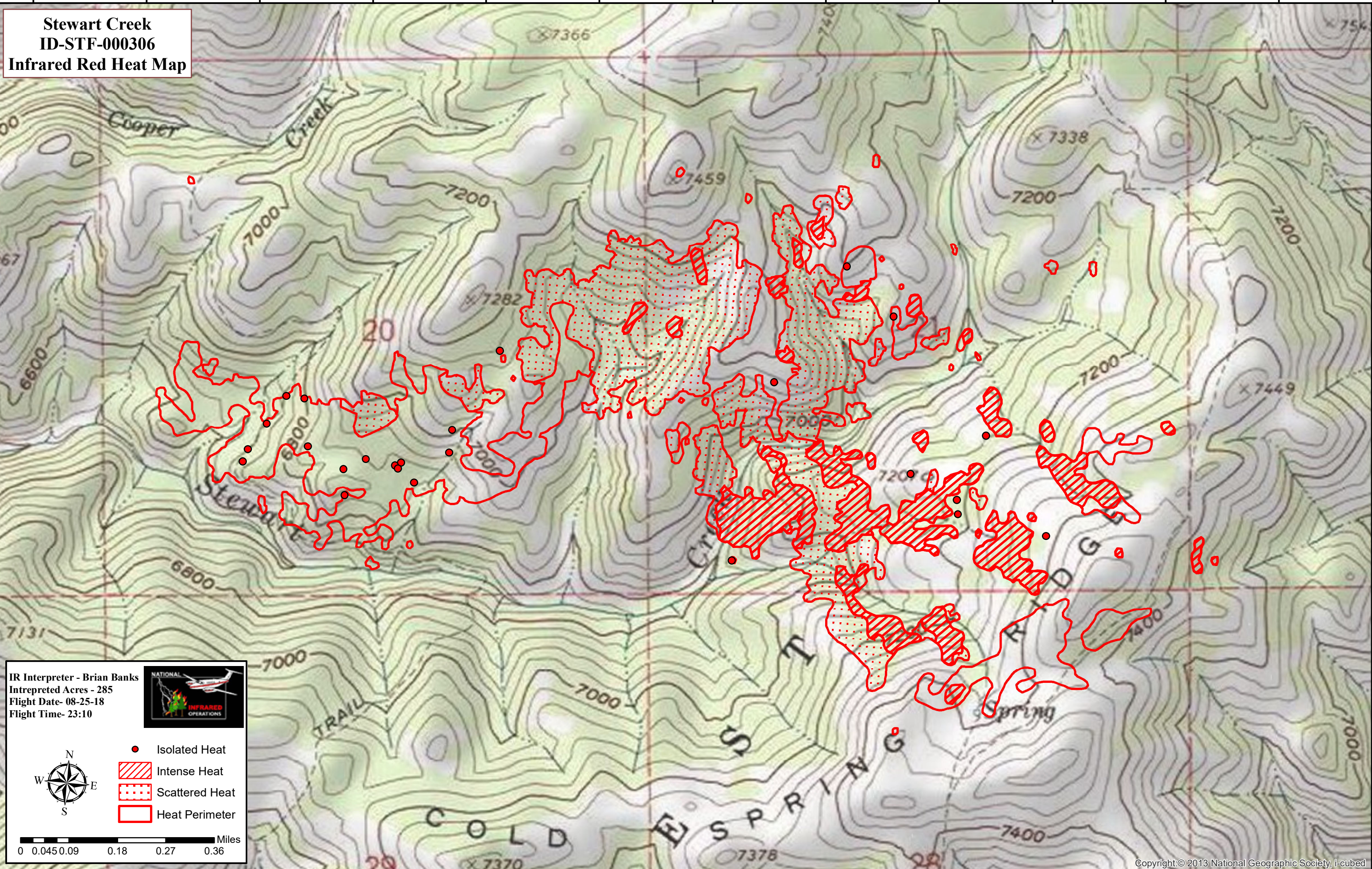
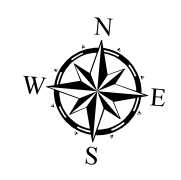
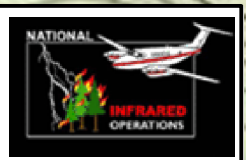


115°4'0"W 115°3'45"W 115°3'30"W 115°3'15"W 115°3'0"W 115°2'45"W 115°2'30"W 115°2'15"W 115°2'0"W 115°1'45"W 115°1'30"W 115°1'15"W

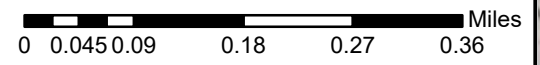


Stewart Creek
ID-STF-000306
Infrared Red Heat Map

IR Interpreter - Brian Banks
Intepreted Acres - 285
Flight Date- 08-25-18
Flight Time- 23:10



- Isolated Heat
- / / / / Intense Heat
- Scattered Heat
- Heat Perimeter



43°28'45"N 43°29'0"N 43°29'15"N 43°29'30"N 43°29'45"N 43°30'0"N