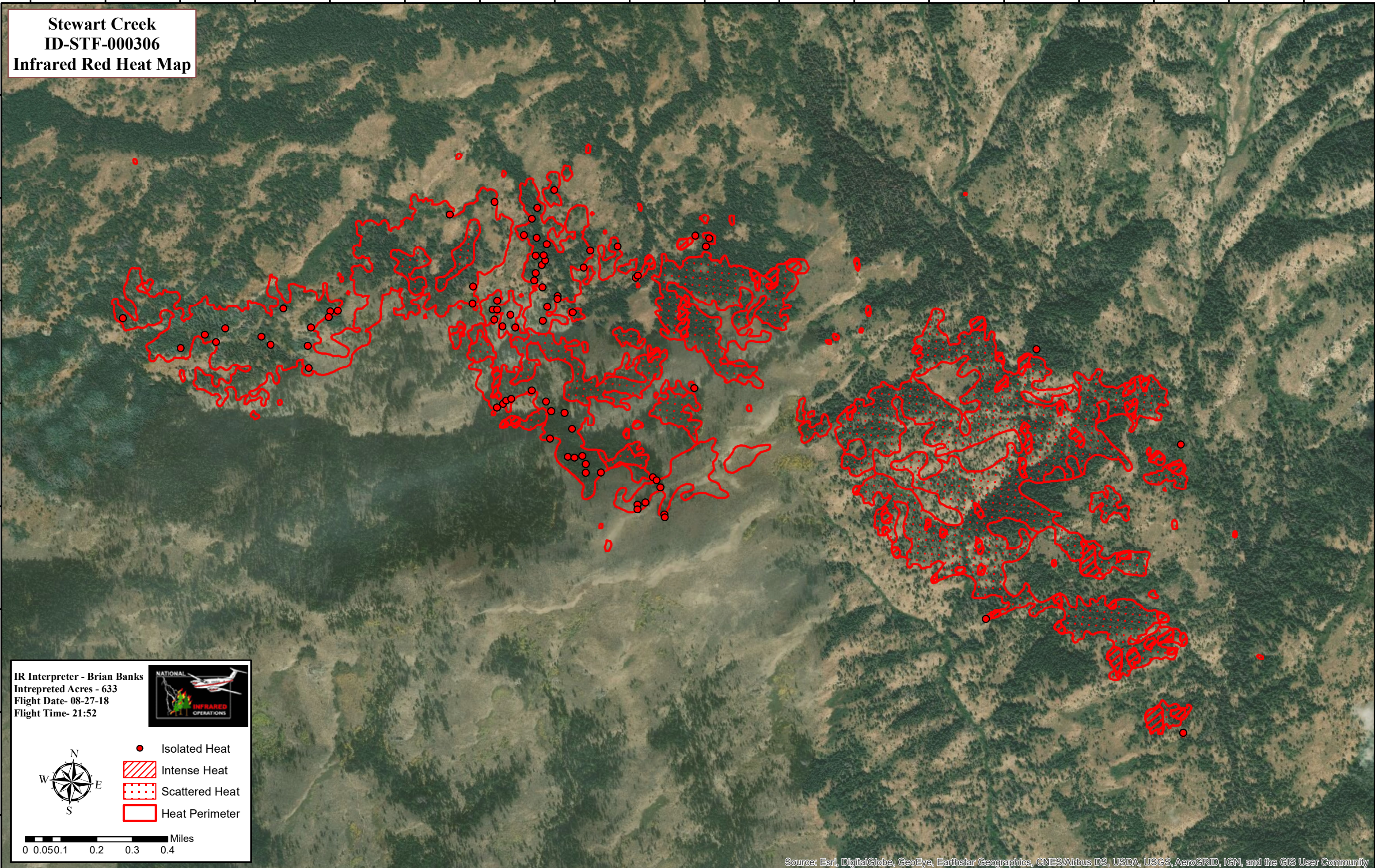


115°4'0"W 115°3'45"W 115°3'30"W 115°3'15"W 115°3'0"W 115°2'45"W 115°2'30"W 115°2'15"W 115°2'0"W 115°1'45"W 115°1'30"W 115°1'15"W 115°1'0"W 115°0'45"W 115°0'30"W 115°0'15"W 115°0'0"W 114°59'45"W

**Stewart Creek
ID-STF-000306
Infrared Red Heat Map**

43°30'0"N
43°29'45"N
43°29'30"N
43°29'15"N
43°29'0"N
43°28'45"N
43°28'30"N
43°28'15"N

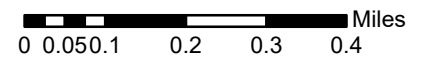
43°30'0"N
43°29'45"N
43°29'30"N
43°29'15"N
43°29'0"N
43°28'45"N
43°28'30"N
43°28'15"N



IR Interpreter - Brian Banks
Intepreted Acres - 633
Flight Date- 08-27-18
Flight Time- 21:52



- Isolated Heat
- Intense Heat
- Scattered Heat
- Heat Perimeter



Source: Esri, DigitalGlobe, GeoEye, Earthstar Geographics, CNES/Airbus DS, USDA, USGS, AeroGRID, IGN, and the GIS User Community

115°4'0"W 115°3'45"W 115°3'30"W 115°3'15"W 115°3'0"W 115°2'45"W 115°2'30"W 115°2'15"W 115°2'0"W 115°1'45"W 115°1'30"W 115°1'15"W 115°1'0"W 115°0'45"W 115°0'30"W 115°0'15"W 115°0'0"W 114°59'45"W