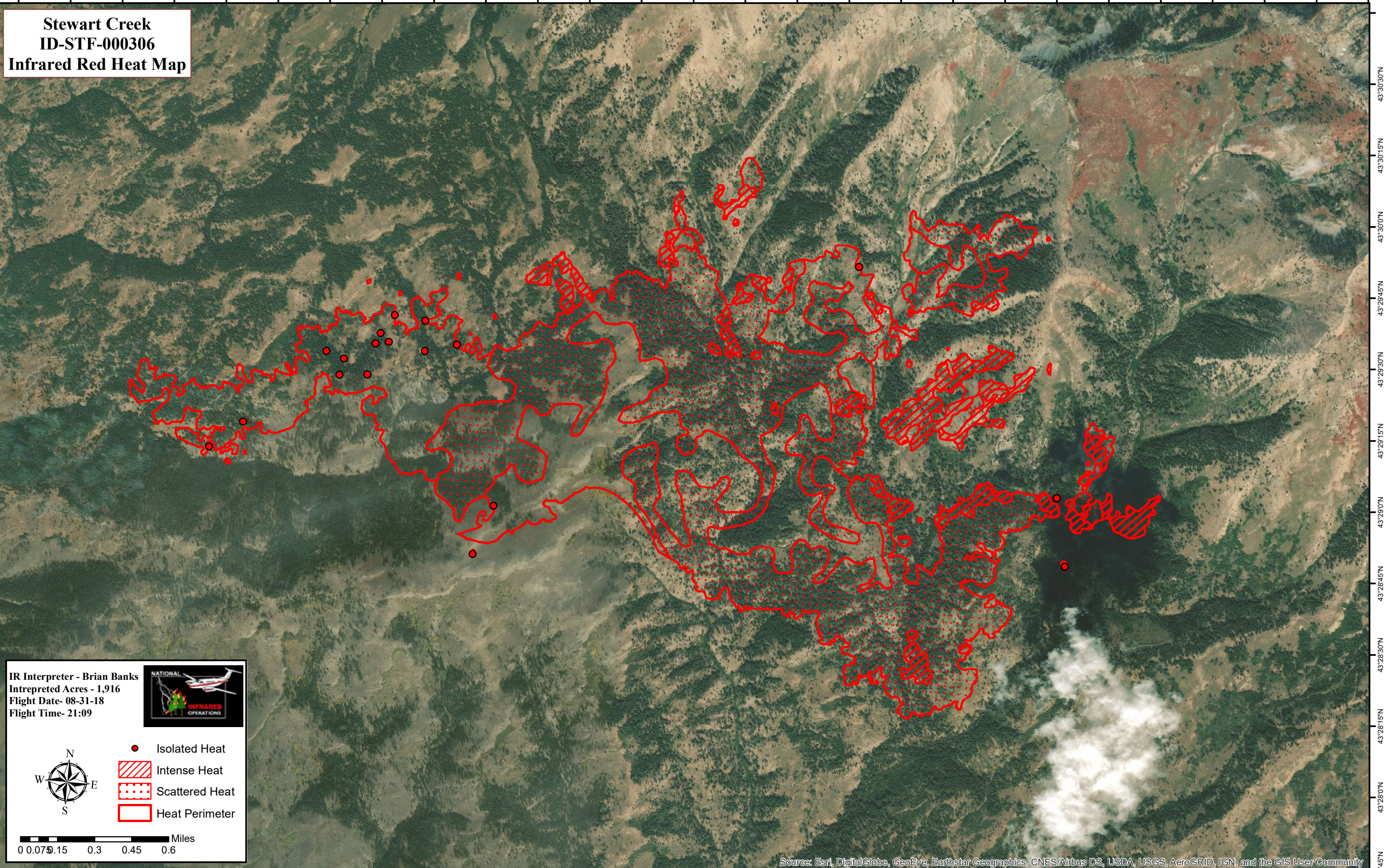


115°4'15"W 115°4'0"W 115°3'45"W 115°3'30"W 115°3'15"W 115°3'0"W 115°2'45"W 115°2'30"W 115°2'15"W 115°2'0"W 115°1'45"W 115°1'30"W 115°1'15"W 115°1'0"W 115°0'45"W 115°0'30"W 115°0'15"W 115°0'0"W 114°59'45"W 114°59'30"W 114°59'15"W 114°59'0"W 114°58'45"W 114°58'30"W 114°58'15"W 114°58'0"W 114°57'45"W

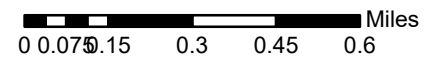


**Stewart Creek**  
**ID-STF-000306**  
**Infrared Red Heat Map**

IR Interpreter - Brian Banks  
Intepreted Acres - 1,916  
Flight Date- 08-31-18  
Flight Time- 21:09



- Isolated Heat
- Intense Heat
- Scattered Heat
- Heat Perimeter



Source: Esri, DigitalGlobe, GeoEye, Earthstar Geographics, CNES/Airbus DS, USDA, USGS, AeroGRID, IGN, and the GIS User Community

115°4'15"W 115°4'0"W 115°3'45"W 115°3'30"W 115°3'15"W 115°3'0"W 115°2'45"W 115°2'30"W 115°2'15"W 115°2'0"W 115°1'45"W 115°1'30"W 115°1'15"W 115°1'0"W 115°0'45"W 115°0'30"W 115°0'15"W 115°0'0"W 114°59'45"W 114°59'30"W 114°59'15"W 114°59'0"W 114°58'45"W 114°58'30"W 114°58'15"W 114°58'0"W 114°57'45"W