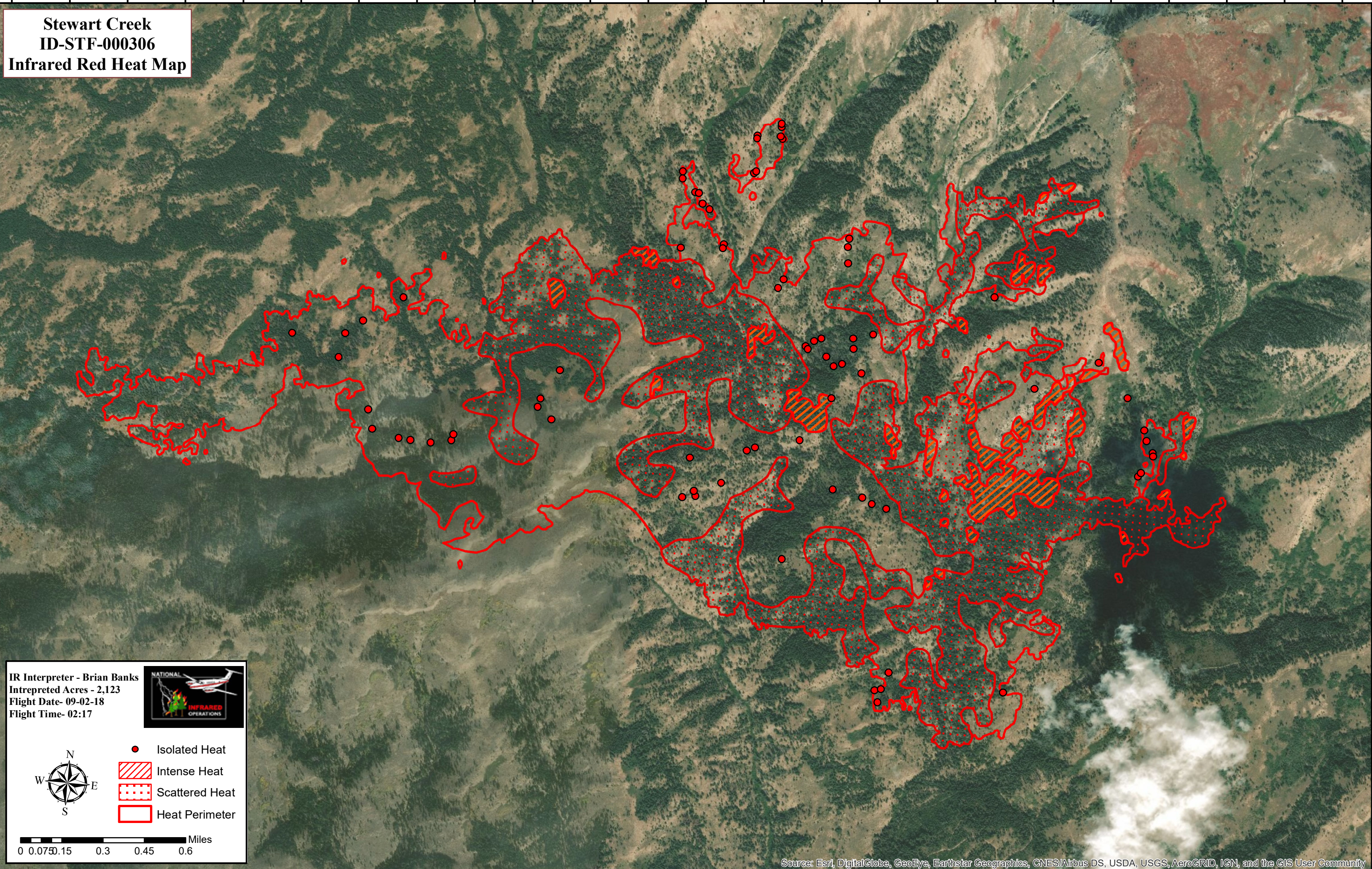


115°40'W 115°34'5"W 115°33'30"W 115°31'15"W 115°30'0"W 115°24'45"W 115°23'30"W 115°22'15"W 115°20'0"W 115°14'45"W 115°13'30"W 115°11'15"W 115°10'0"W 115°04'45"W 115°03'30"W 115°01'15"W 115°00'0"W 114°59'45"W 114°59'30"W 114°59'15"W 114°59'0"W 114°58'45"W 114°58'30"W 114°58'15"W

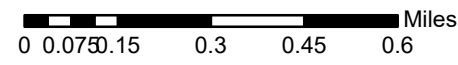


Stewart Creek
ID-STF-000306
Infrared Red Heat Map

IR Interpreter - Brian Banks
Intepreted Acres - 2,123
Flight Date- 09-02-18
Flight Time- 02:17



- Isolated Heat
- Intense Heat
- Scattered Heat
- Heat Perimeter



Source: Esri, DigitalGlobe, GeoEye, Earthstar Geographics, CNES/Airbus DS, USDA, USGS, AeroGRID, IGN, and the GIS User Community

115°40'W 115°34'5"W 115°33'30"W 115°31'15"W 115°30'0"W 115°24'45"W 115°23'30"W 115°22'15"W 115°20'0"W 115°14'45"W 115°13'30"W 115°11'15"W 115°10'0"W 115°04'45"W 115°03'30"W 115°01'15"W 115°00'0"W 114°59'45"W 114°59'30"W 114°59'15"W 114°59'0"W 114°58'45"W 114°58'30"W 114°58'15"W