

115°3'W

115°2'W

115°1'W

115°0'W

114°59'W

114°58'W

Stewart Creek Fire

Heat Acres: 5,517

ID-STF-000306

Infrared Interpretation

Imagery Date:

2018/09/28 2258 Hrs



1:35,000



43°32'N

43°31'N

43°30'N

43°29'N

43°28'N

43°27'N

43°26'N

43°32'N

43°31'N

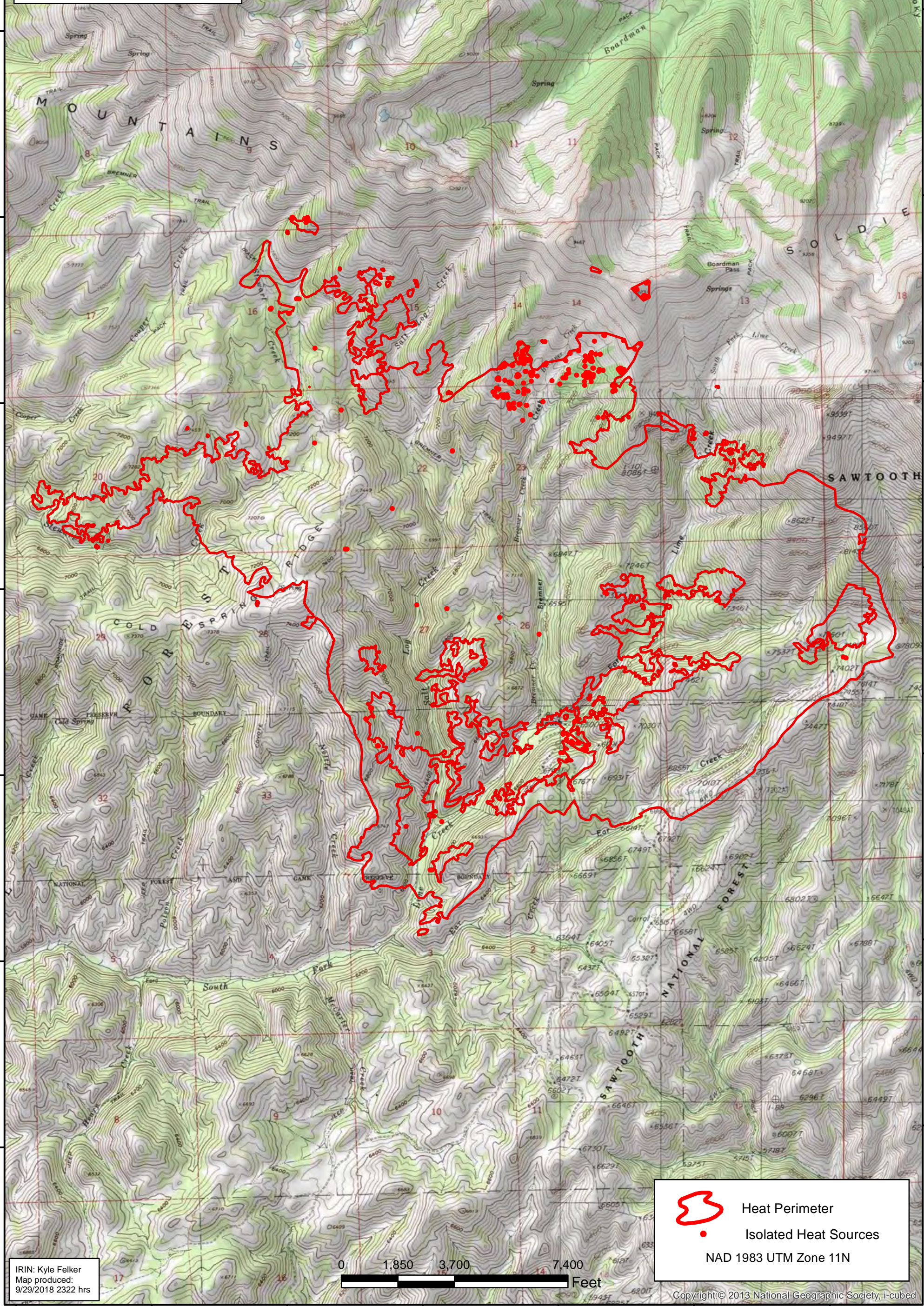
43°30'N

43°29'N

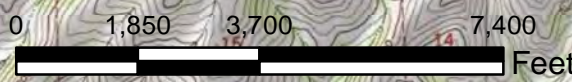
43°28'N

43°27'N

43°26'N



IRIN: Kyle Felker
Map produced:
9/29/2018 2322 hrs



- Heat Perimeter
- Isolated Heat Sources

NAD 1983 UTM Zone 11N

Copyright © 2013 National Geographic Society, i-cubed

115°4'W

115°3'W

115°2'W

115°1'W

115°0'W

114°59'W

114°58'W