
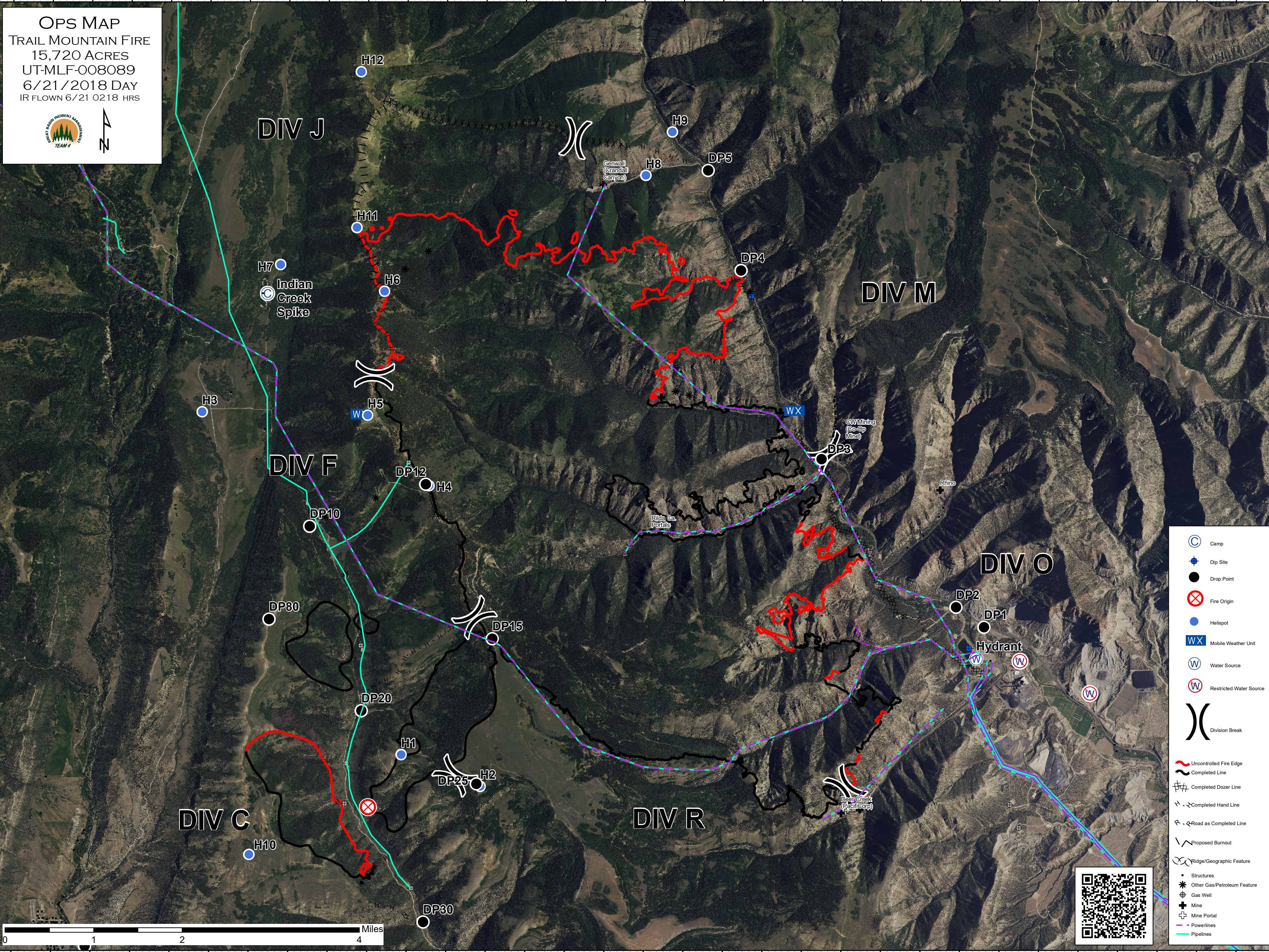


OPS MAP
TRAIL MOUNTAIN FIRE
 15,720 ACRES
 UT-MLF-008089
 6/21/2018 DAY
 IR FLOWN 6/21 0218 HRS

- Camp
- Dip Site
- Drop Point
- Fire Origin
- Helispot
- Mobile Weather Unit
- Water Source
- Restricted Water Source
- Division Break
- Uncontrolled Fire Edge
- Completed Line
- Completed Dozer Line
- Completed Hand Line
- Road as Completed Line
- Proposed Burnout
- Ridge/Geographic Feature
- Structures
- Other Gas/Petroleum Feature
- Gas Well
- Mine
- Mine Portal
- Powerlines
- Pipelines

