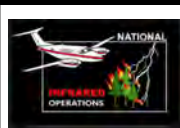


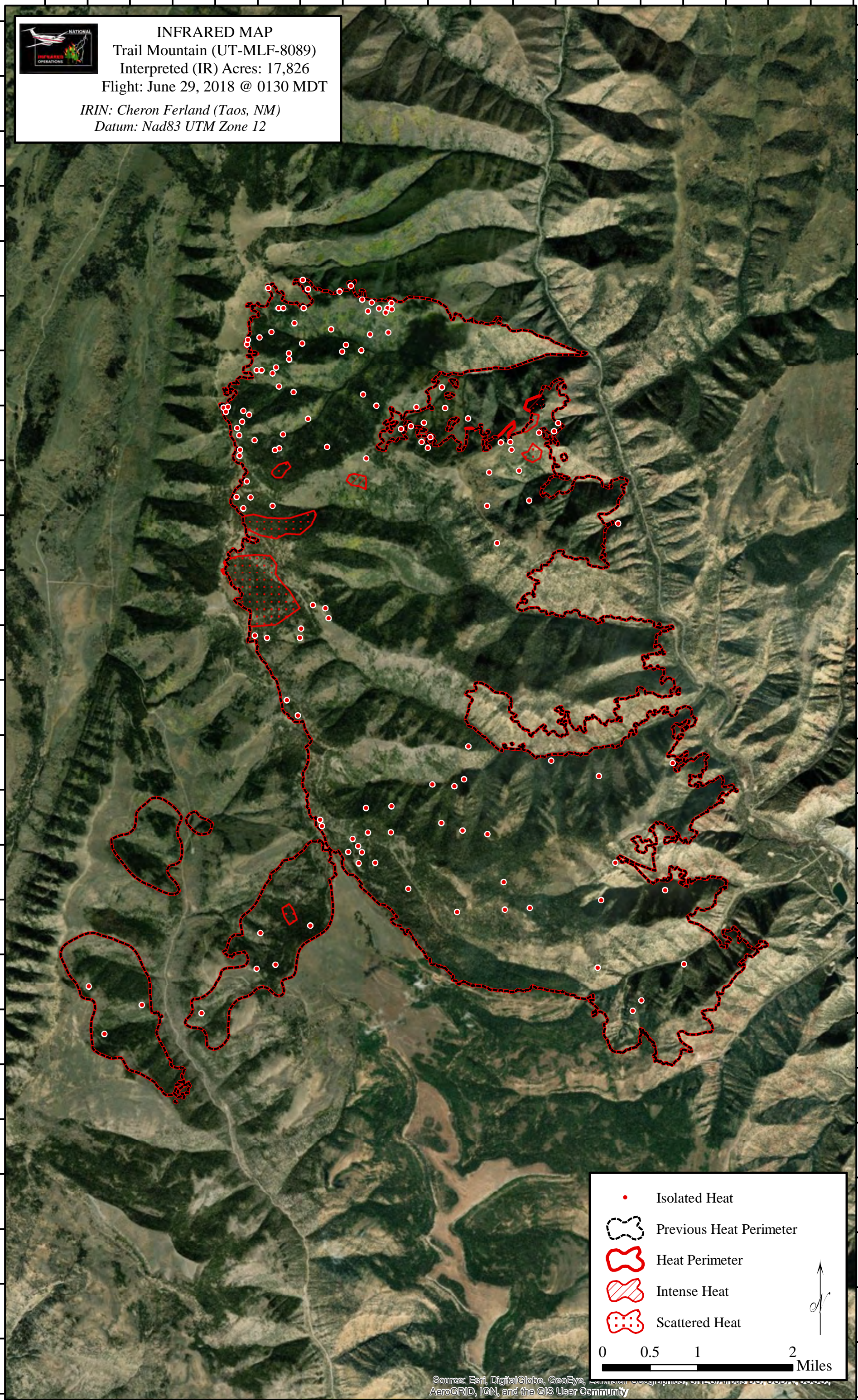
111°15'0"W 111°14'0"W 111°13'0"W 111°12'0"W 111°11'0"W 111°10'0"W 111°9'0"W 111°8'0"W 111°7'0"W 111°6'0"W

39°30'30"N
39°29'30"N
39°28'30"N
39°27'30"N
39°26'30"N
39°25'30"N
39°24'30"N
39°23'30"N
39°22'30"N
39°21'30"N
39°20'30"N
39°19'30"N
39°18'30"N

39°30'30"N
39°29'30"N
39°28'30"N
39°27'30"N
39°26'30"N
39°25'30"N
39°24'30"N
39°23'30"N
39°22'30"N
39°21'30"N
39°20'30"N
39°19'30"N



INFRARED MAP
Trail Mountain (UT-MLF-8089)
Interpreted (IR) Acres: 17,826
Flight: June 29, 2018 @ 0130 MDT
IRIN: Cheron Ferland (Taos, NM)
Datum: Nad83 UTM Zone 12



- Isolated Heat
- Previous Heat Perimeter
- Heat Perimeter
- Intense Heat
- Scattered Heat

0 0.5 1 2 Miles

Source: Esri, DigitalGlobe, GeoEye, Earthstar Geographics, CNES/Airbus DS, USDA, AeroGRID, IGN, and the GIS User Community

111°14'0"W 111°13'0"W 111°12'0"W 111°11'0"W 111°10'0"W 111°9'0"W 111°8'0"W 111°7'0"W 111°6'0"W 111°5'0"W