

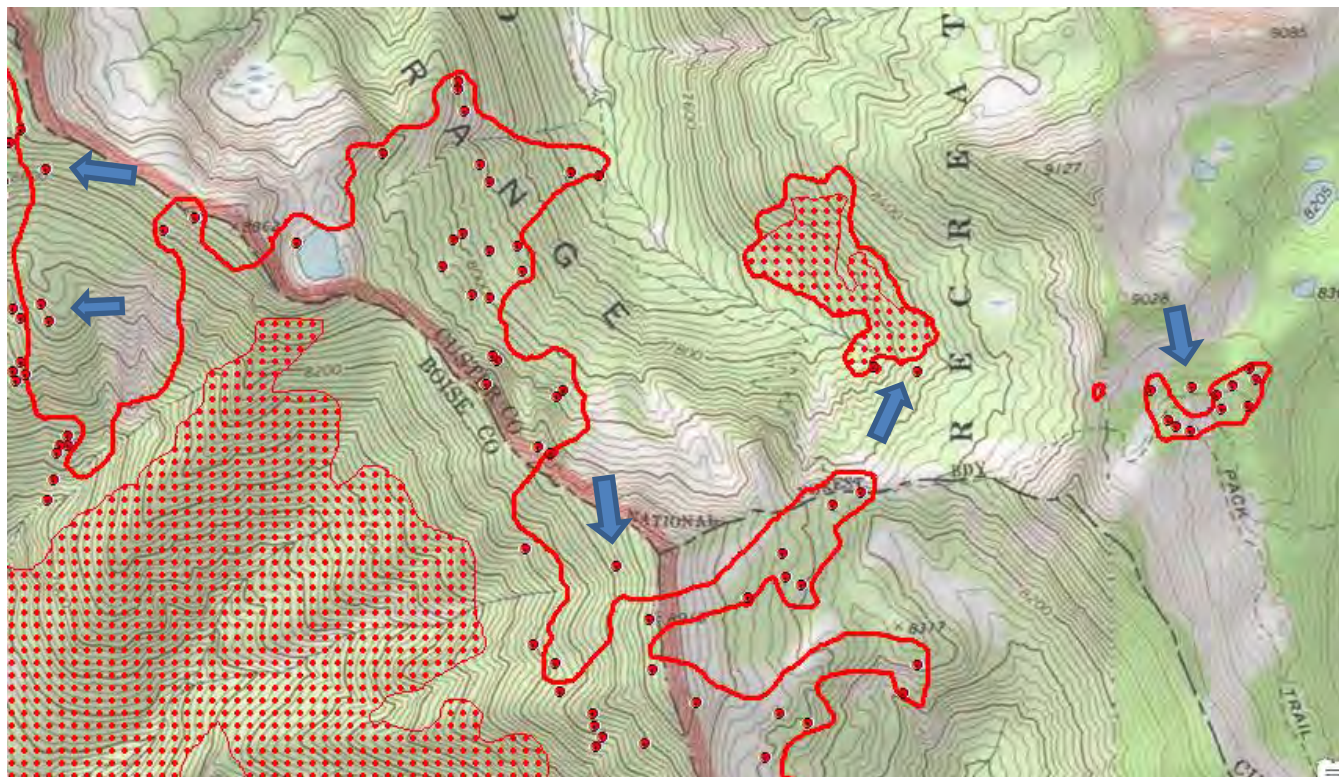
## INFRARED INTERPRETER'S DAILY LOG

<b>Incident Name:</b> Wapiti ID-BOF-000960	<b>IR Interpreter(s):</b> Tammy Hocut thocut@fs.fed.us	<b>Local Dispatch Phone:</b> Boise 208-384-3398	<b>Interpreted Size:</b> 5,492 Acres <b>Growth:</b> 2 Acres
<b>Flight Time:</b> 0130 (MDT) <b>Flight Date:</b> 08/29/2018	<b>Interpreter(s) location:</b> Jasper, AR <b>Interpreter(s) Phone:</b> 870-446-5878 (landline) 870-365-2810 (cell)	<b>GACC IR Liaison:</b> Nate Yorgason <b>GACC IR Liaison Phone:</b> 435-590-1107	<b>National Coordinator:</b> Tom Mellin <b>National Coord. Phone:</b> 505-301-8167
<b>Ordered By:</b> Jeff Prokosch 775-741-2126 jprokosch@gmail.com	<b>A Number:</b> A-26	<b>Aircraft/Scanner System:</b> N144Z / Phoenix	<b>Pilots/Techs:</b> Johnson & Netcher / Bob Brantlinger & Mike Mann
<b>IRIN Comments on imagery:</b> 1 passes, Ortho and Color flown in an east-west direction.		<b>Weather at time of flight:</b> Cloudy	<b>Flight Objective:</b> Identify and map Heat perimeter, Scattered Heat and Isolated Heat Sources.
<b>Date and Time Imagery Received by Interpreter:</b> 08/29/2018 – 0219 (MDT)		<b>Type of media for final product:</b> Shape files, KMZ, PDF, and IRIN Log	
<b>Date and Time Products Delivered to Incident:</b> 07/25/2018 – 0300 (MDT)		<b>Digital files sent to: NIFC FTP @</b> <a href="https://ftp.nifc.gov/public/incident_specific_data/great_basin/2018_Incidents/2018_Wapiti/IR/20180829/">https://ftp.nifc.gov/public/incident_specific_data/great_basin/2018_Incidents/2018_Wapiti/IR/20180829/</a>	

**Comments /notes on tonight's mission and this interpretation:**

Started with IR Heat Perimeter dated 08/28 – starting acres was 5,490. Growth – 2 Acres.

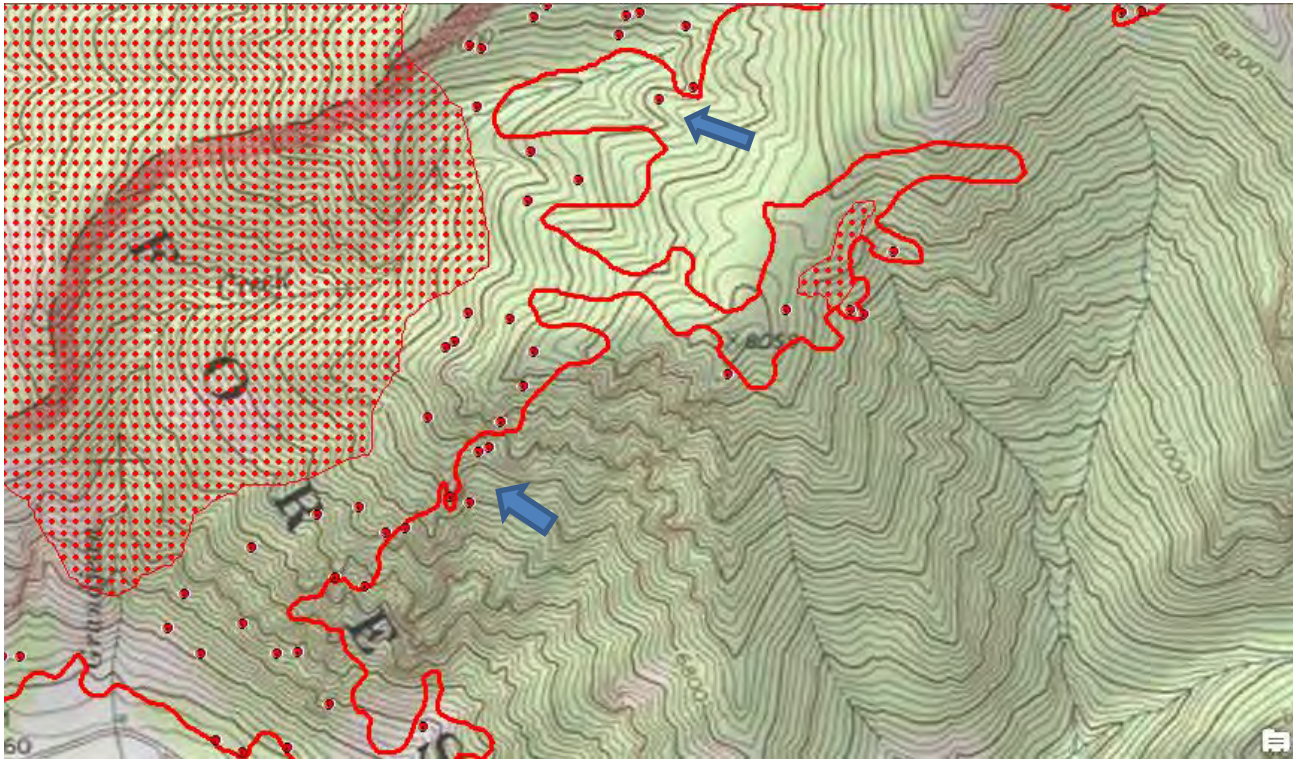
Scattered and isolated heat on east half of fire. Some isolated heat sources were outside the main heat perimeter on north and east side of the fire.





# INFRARED INTERPRETER'S DAILY LOG

Some isolated heat sources outside the main fire perimeter on the south east part of the fire.



On the northwest side of the fire heat Mt. Zumwalt there is an isolated heat source outside the main fire perimeter.

