

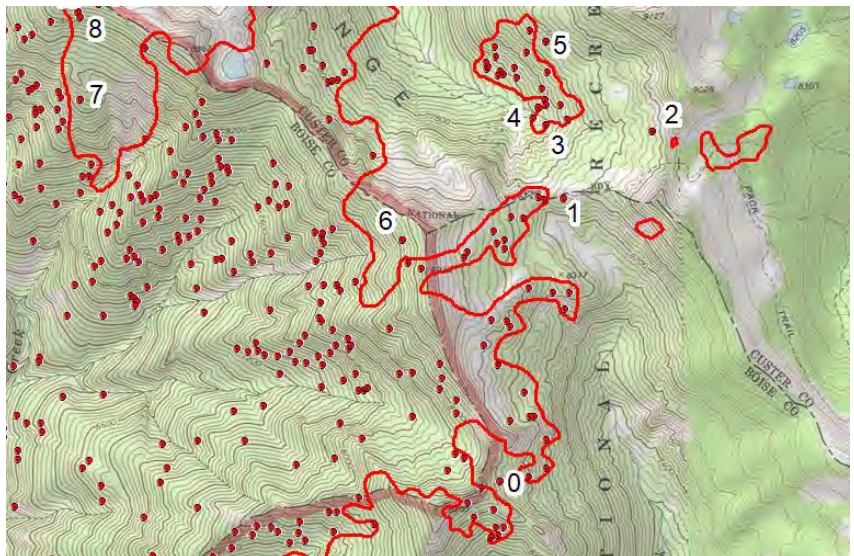
## INFRARED INTERPRETER'S DAILY LOG

<b>Incident Name:</b> Wapiti ID-BOF-000960	<b>IR Interpreter(s):</b> Tammy Hocut thocut@fs.fed.us	<b>Local Dispatch Phone:</b> Boise 208-384-3398	<b>Interpreted Size:</b> 4,551 Acres <b>Growth:</b> -941 Acres (due to a ground recon adjusting original WFDSS fire perimeter caused a reduction in acres)
<b>Flight Time:</b> 2110 (MDT) <b>Flight Date:</b> 08/29/2018	<b>Interpreter(s) location:</b> Jasper, AR <b>Interpreter(s) Phone:</b> 870-446-5878 (landline) 870-365-2810 (cell)	<b>GACC IR Liaison:</b> Nate Yorgason <b>GACC IR Liaison Phone:</b> 435-590-1107	<b>National Coordinator:</b> Tom Mellin <b>National Coord. Phone:</b> 505-301-8167
<b>Ordered By:</b> Jeff Prokosch 775-741-2126 jprokosch@gmail.com	<b>A Number:</b> A-29	<b>Aircraft/Scanner System:</b> N144Z / Phoenix	<b>Pilots/Techs:</b> Johnson & Netcher / Bob Brantlinger & Mike Mann
<b>IRIN Comments on imagery:</b> 1 passes, Ortho and Color flown in an east-west direction.		<b>Weather at time of flight:</b> Cloudy	<b>Flight Objective:</b> Identify and map Heat perimeter, Scattered Heat and Isolated Heat Sources.
<b>Date and Time Imagery Received by Interpreter:</b> 08/29/2018 – 2128 (MDT)		<b>Type of media for final product:</b> Shape files, KMZ, PDF, and IRIN Log	
<b>Date and Time Products Delivered to Incident:</b> 08/29/2018 – 2158 (MDT)		<b>Digital files sent to: NIFC FTP @</b> <a href="https://ftp.nifc.gov/public/incident_specific_data/great_basin/2018_Incidents/2018_Wapiti/IR/20180830/">https://ftp.nifc.gov/public/incident_specific_data/great_basin/2018_Incidents/2018_Wapiti/IR/20180830/</a>	

**Comments /notes on tonight's mission and this interpretation:**

Started with updated incident fire perimeter dated 08/29 which had a 941 reduction in acres due to correcting fire line from ground recon – 4,551 acres.  
 Isolated heat throughout entire fire. Some isolated heat sources were outside the main heat perimeter on north and east and south side of the fire.

FID	Long	Lat
0	115° 8' 19.86" W	44° 10' 40.10" N
1	115° 8' 2.47" W	44° 11' 30.67" N
2	115° 7' 39.73" W	44° 11' 42.33" N
3	115° 8' 6.49" W	44° 11' 43.96" N
4	115° 8' 8.06" W	44° 11' 47.14" N
5	115° 8' 5.83" W	44° 11' 58.87" N
6	115° 8' 43.02" W	44° 11' 23.87" N
7	115° 10' 2.77" W	44° 11' 50.37" N
8	115° 10' 2.62" W	44° 12' 6.11" N
9	115° 10' 2.22" W	44° 12' 5.07" N
10	115° 9' 57.47" W	44° 12' 7.50" N
11	115° 10' 7.75" W	44° 12' 19.83" N
12	115° 9' 27.43" W	44° 9' 36.75" N



# INFRARED INTERPRETER'S DAILY LOG

