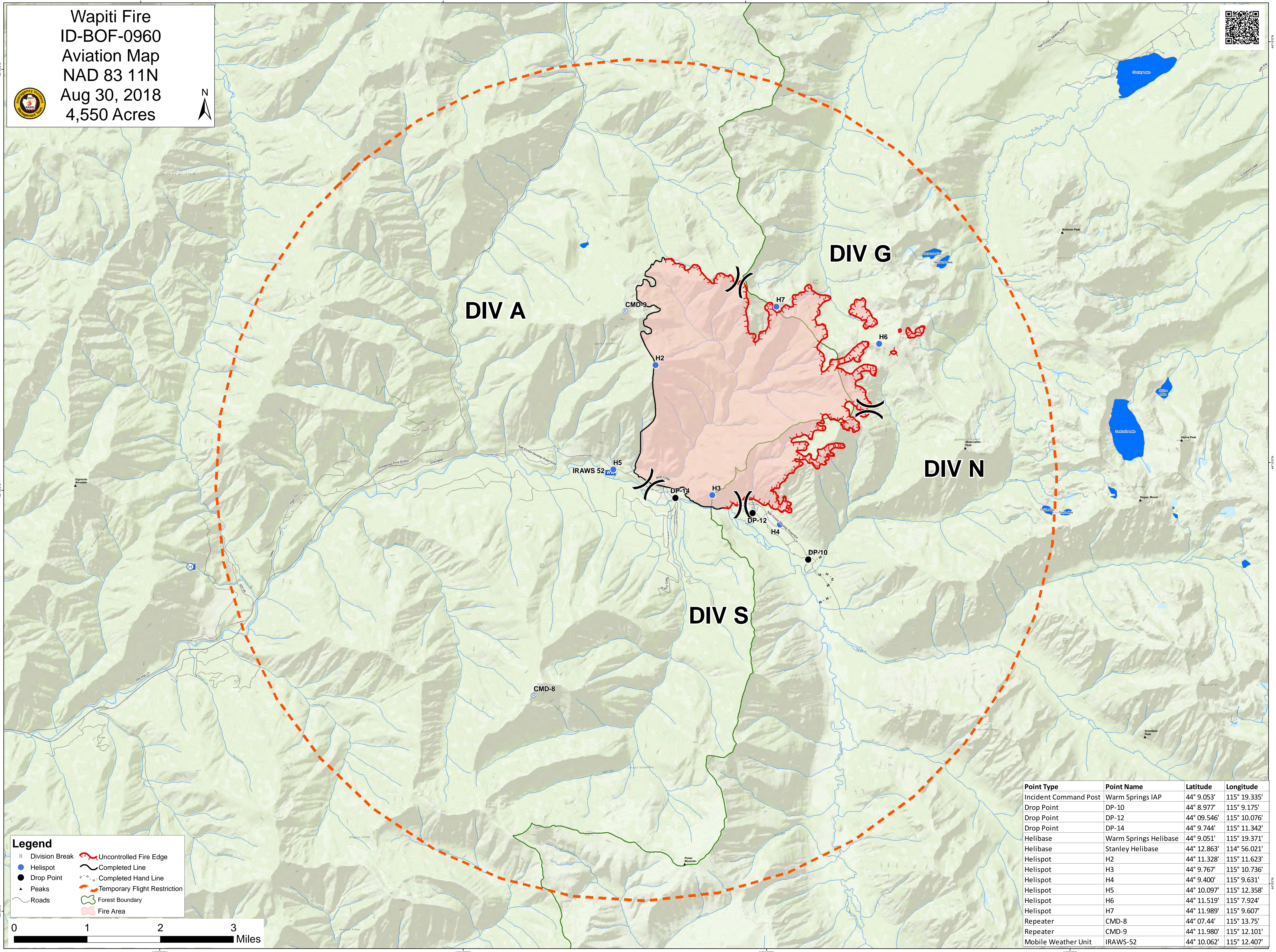
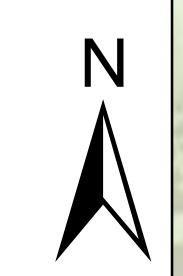
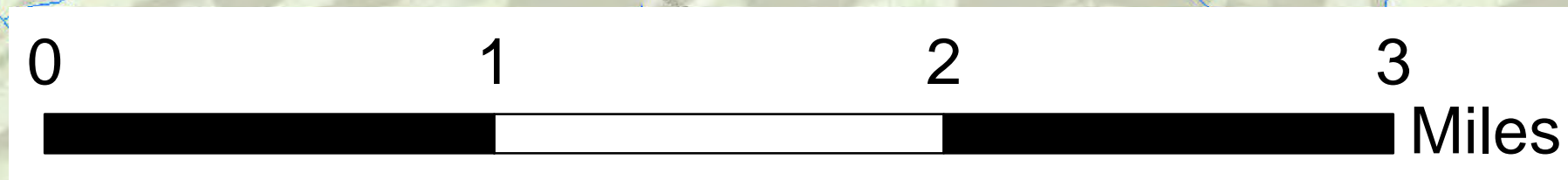


Wapiti Fire
 ID-BOF-0960
 Aviation Map
 NAD 83 11N
 Aug 30, 2018
 4,550 Acres



Legend

- Division Break
- Helispot
- Drop Point
- Peaks
- Roads
- Uncontrolled Fire Edge
- Completed Line
- Completed Hand Line
- Temporary Flight Restriction
- Forest Boundary
- Fire Area



| Point Type | Point Name | Latitude | Longitude |
|-----------------------|-----------------------|-------------|--------------|
| Incident Command Post | Warm Springs IAP | 44° 9.053' | 115° 19.335' |
| Drop Point | DP-10 | 44° 8.977' | 115° 9.175' |
| Drop Point | DP-12 | 44° 09.546' | 115° 10.076' |
| Drop Point | DP-14 | 44° 9.744' | 115° 11.342' |
| Helibase | Warm Springs Helibase | 44° 9.051' | 115° 19.371' |
| Helibase | Stanley Helibase | 44° 12.863' | 114° 56.021' |
| Helispot | H2 | 44° 11.328' | 115° 11.623' |
| Helispot | H3 | 44° 9.767' | 115° 10.736' |
| Helispot | H4 | 44° 9.400' | 115° 9.631' |
| Helispot | H5 | 44° 10.097' | 115° 12.358' |
| Helispot | H6 | 44° 11.519' | 115° 7.924' |
| Helispot | H7 | 44° 11.989' | 115° 9.607' |
| Repeater | CMD-8 | 44° 07.44' | 115° 13.75' |
| Repeater | CMD-9 | 44° 11.980' | 115° 12.101' |
| Mobile Weather Unit | IRAWS-52 | 44° 10.062' | 115° 12.407' |