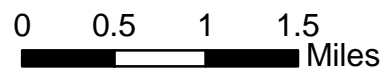


**West Valley Fire**  
 UT-DIF-000265  
**IAP Index**  
 July 9, 2018

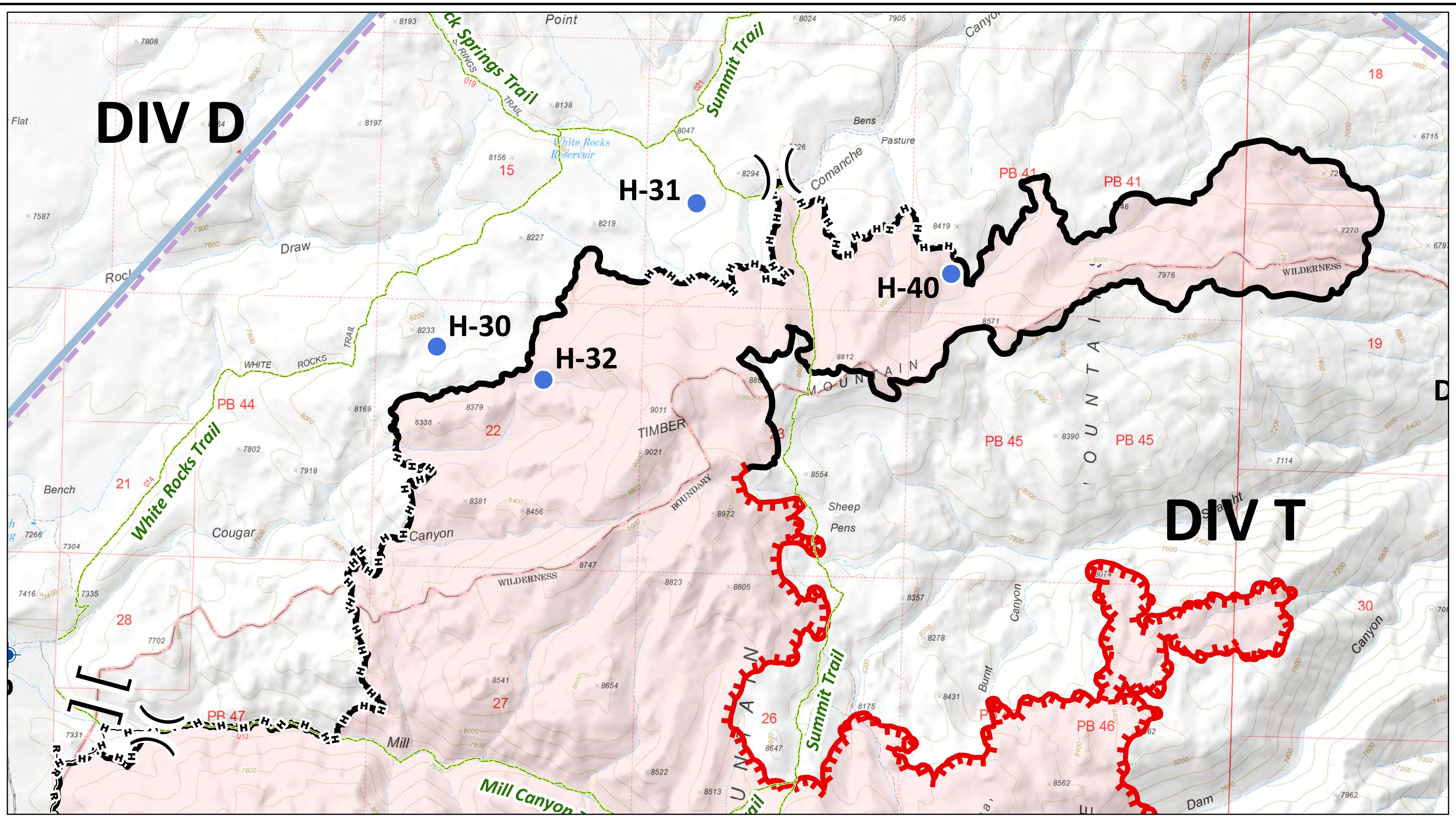
**11,771 acres**



- |            |             |                     |                        |
|------------|-------------|---------------------|------------------------|
| Camp       | Dip Site    | Mobile Weather Unit | Completed Line         |
| Repeater   | Helispot    | Division Break      | Uncontrolled Fire Edge |
| Sling Site | Fire Origin | ICP                 | Completed Dozer Line   |
|            |             | Helibase            | Completed Hand Line    |
|            |             | TFR                 | Road as Completed Line |







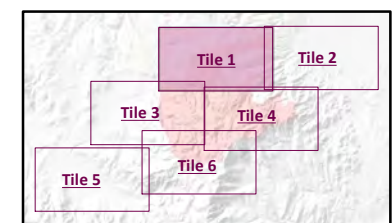
**West Valley Fire**  
 UT-DIF-000265  
**IAP Tile: 1**  
 July 9, 2018

**11,771 acres**

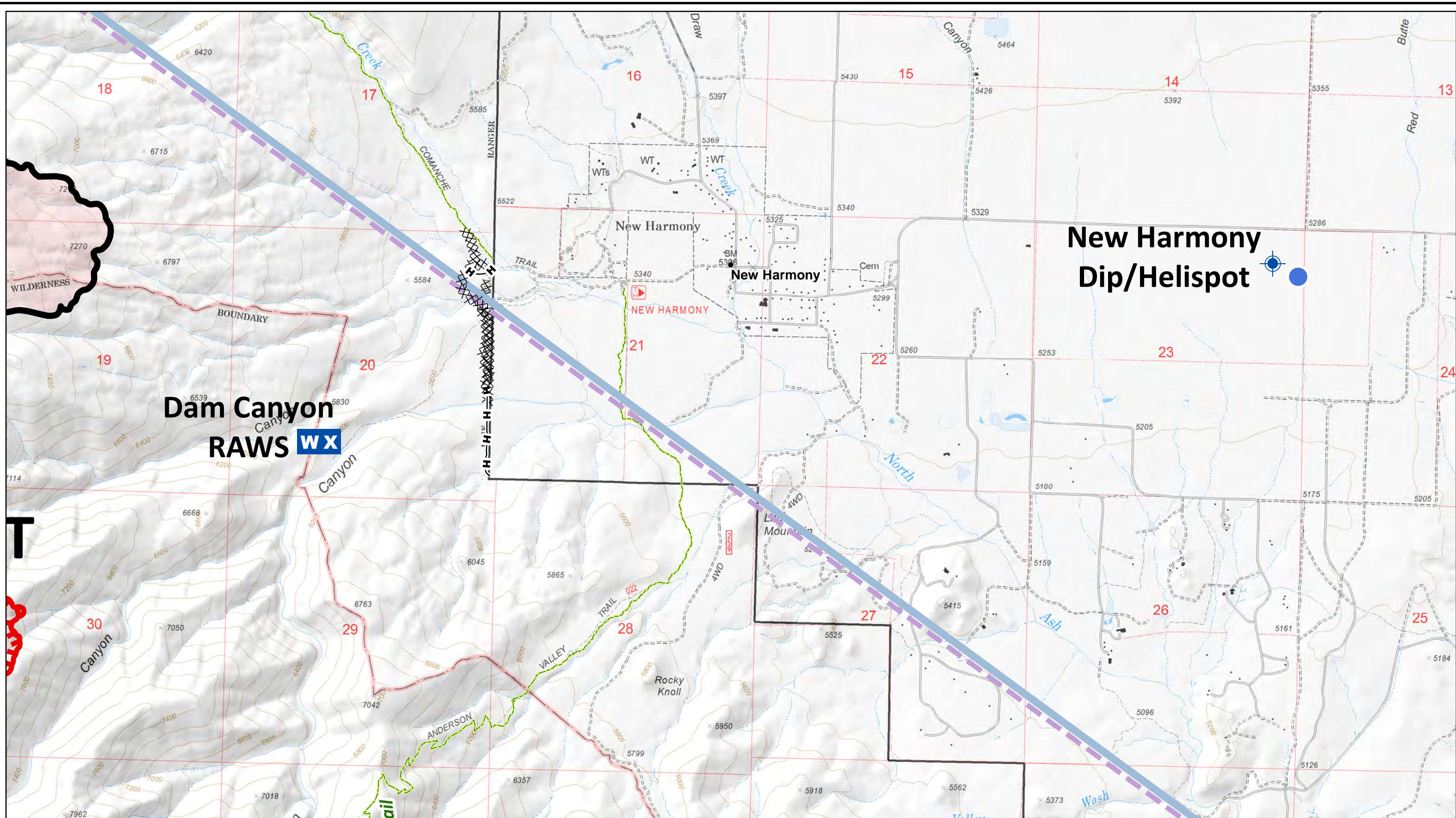
0 0.25 0.5 Miles



- |             |                     |              |                              |
|-------------|---------------------|--------------|------------------------------|
| Repeater    | Helispot            | Branch Break | Uncontrolled Fire Edge       |
| Camp        | Division Break      | Helibase     | Completed Line               |
| Dip Site    | Mobile Weather Unit | ICP          | Road as Completed Line       |
| Fire Origin | Sling Site          |              | Completed Hand Line          |
|             |                     |              | Completed Dozer Line         |
|             |                     |              | Temporary Flight Restriction |







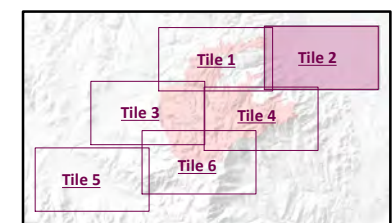
**West Valley Fire**  
 UT-DIF-000265  
**IAP Tile: 2**  
**July 9, 2018**

**11,771 acres**

0 0.25 0.5 Miles



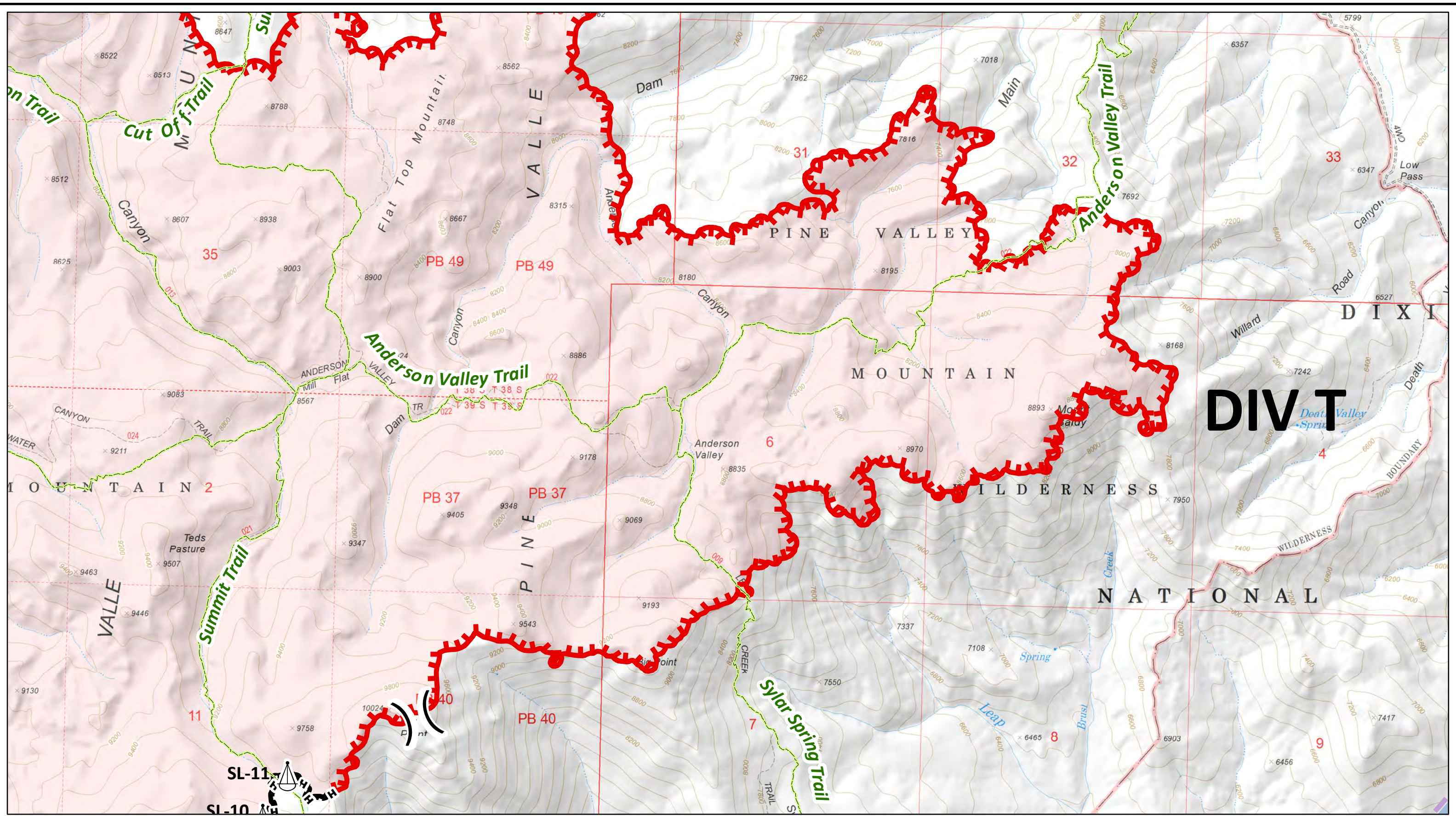
- |             |                     |              |                              |
|-------------|---------------------|--------------|------------------------------|
| Repeater    | Helispot            | Branch Break | Uncontrolled Fire Edge       |
| Camp        | Division Break      | Helibase     | Completed Line               |
| Dip Site    | Mobile Weather Unit | ICP          | Road as Completed Line       |
| Fire Origin | Sling Site          |              | Completed Hand Line          |
|             |                     |              | Completed Dozer Line         |
|             |                     |              | Temporary Flight Restriction |











**DIV T**

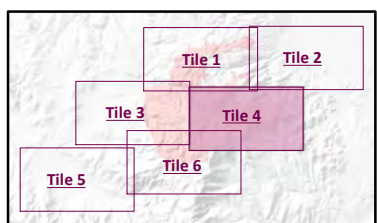


**West Valley Fire**  
 UT-DIF-000265  
**IAP Tile: 4**  
**July 9, 2018**

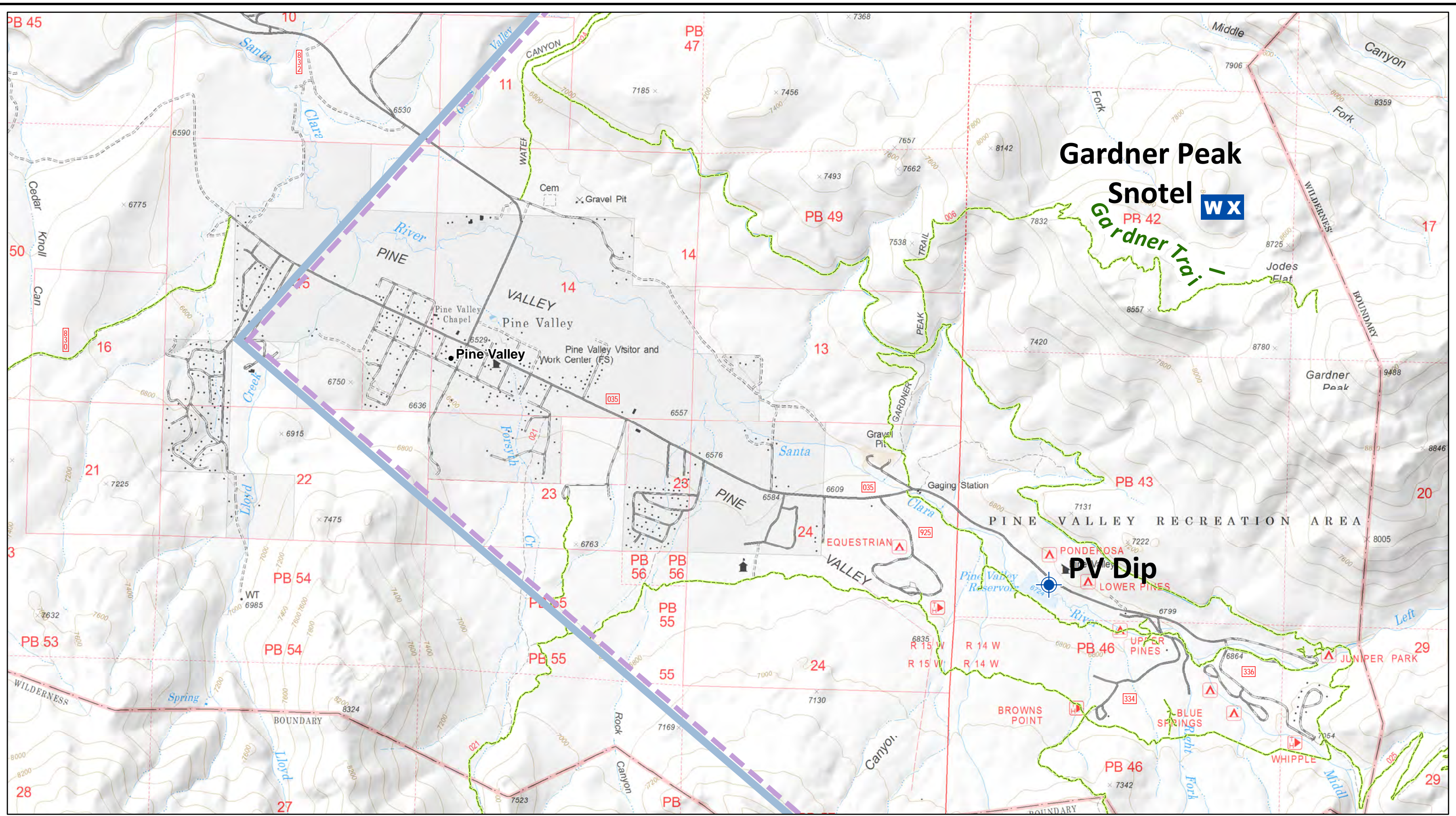
**11,771 acres**



- |             |                     |              |                              |
|-------------|---------------------|--------------|------------------------------|
| Repeater    | Helispot            | Branch Break | Uncontrolled Fire Edge       |
| Camp        | Division Break      | Helibase     | Completed Line               |
| Dip Site    | Mobile Weather Unit | ICP          | Road as Completed Line       |
| Fire Origin | Sling Site          |              | Completed Hand Line          |
|             |                     |              | Completed Dozer Line         |
|             |                     |              | Temporary Flight Restriction |

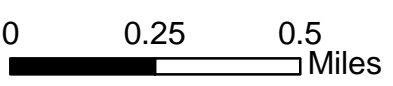




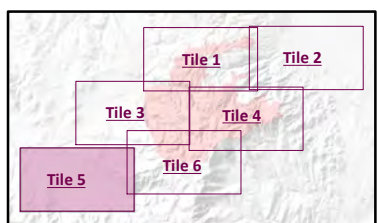


**West Valley Fire**  
 UT-DIF-000265  
**IAP Tile: 5**  
**July 9, 2018**

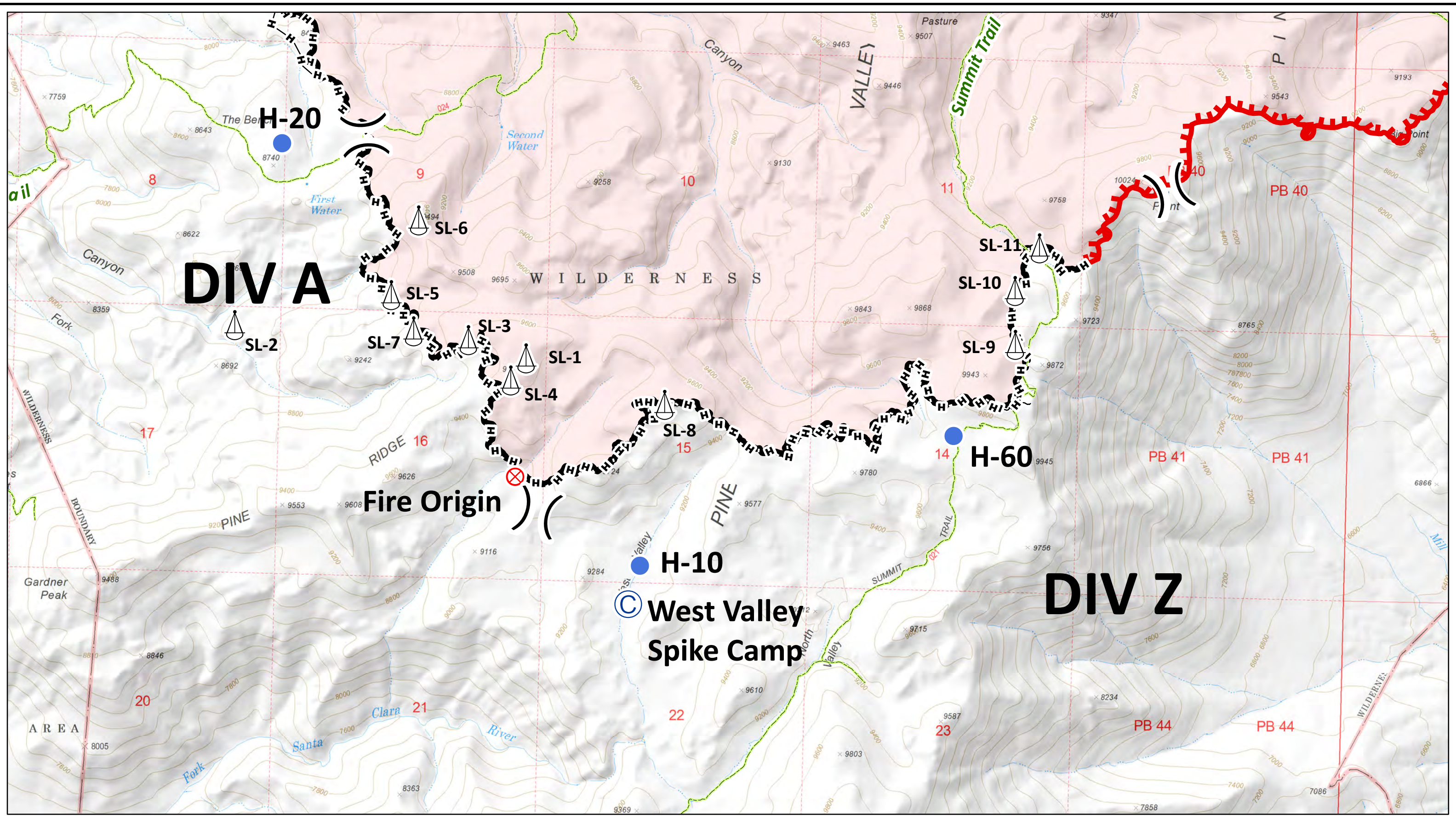
**11,771 acres**



- |             |                     |              |                              |
|-------------|---------------------|--------------|------------------------------|
| Repeater    | Helispot            | Branch Break | Uncontrolled Fire Edge       |
| Camp        | Division Break      | Helibase     | Completed Line               |
| Dip Site    | Mobile Weather Unit | ICP          | R - R Road as Completed Line |
| Fire Origin | Sling Site          |              | H H Completed Hand Line      |
|             |                     |              | XXX Completed Dozer Line     |
|             |                     |              | Temporary Flight Restriction |







**West Valley Fire**  
 UT-DIF-000265  
**IAP Tile: 6**  
 July 9, 2018

**11,771 acres**



- |             |                     |              |                              |
|-------------|---------------------|--------------|------------------------------|
| Repeater    | Helispot            | Branch Break | Uncontrolled Fire Edge       |
| Camp        | Division Break      | Helibase     | Completed Line               |
| Dip Site    | Mobile Weather Unit | ICP          | Road as Completed Line       |
| Fire Origin | Sling Site          |              | Completed Hand Line          |
|             |                     |              | Completed Dozer Line         |
|             |                     |              | Temporary Flight Restriction |

