

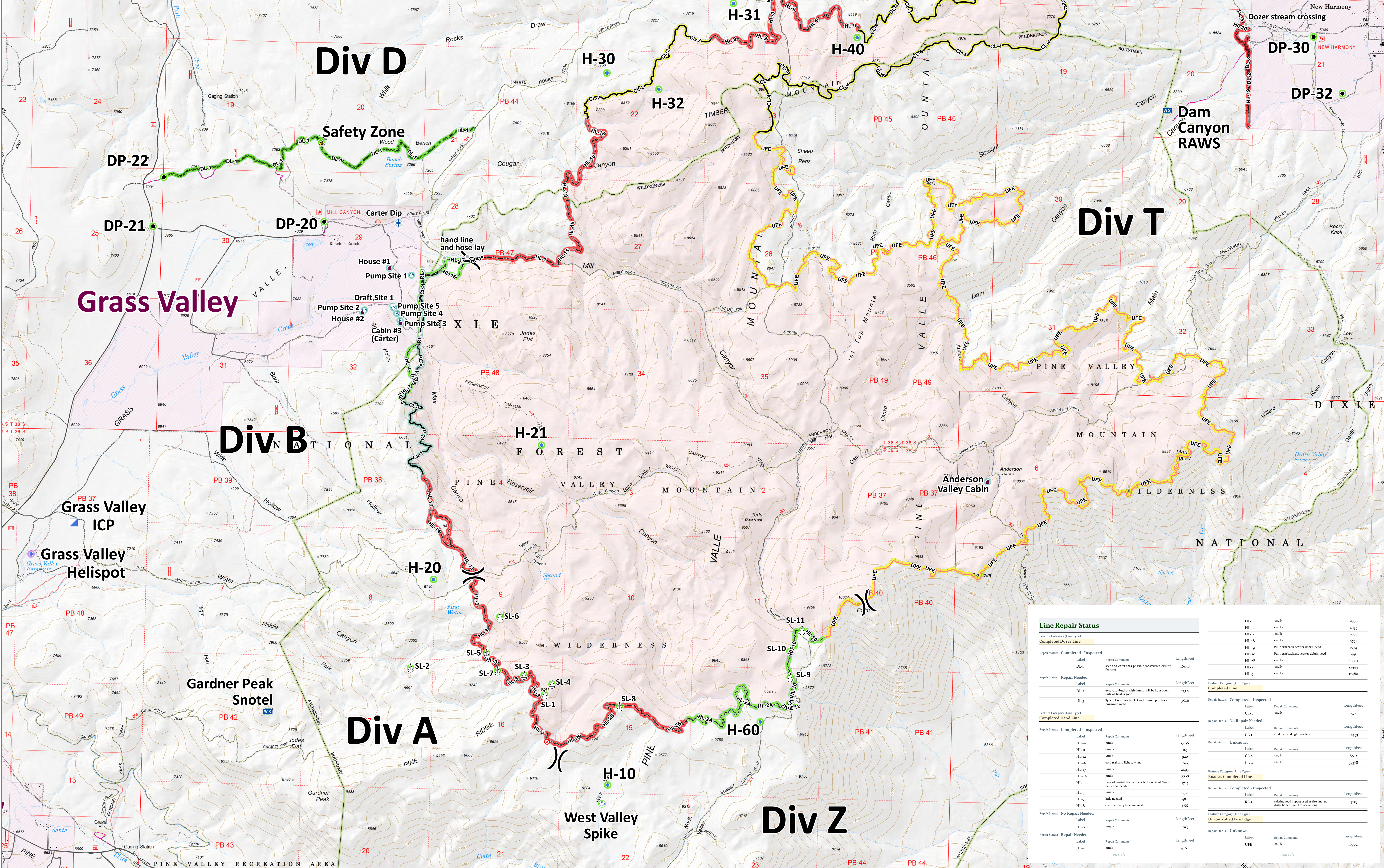
West Valley Fire
UT-DIF-000265
Repair Map
July 10, 2018
appx. 11,771 acres

- Water Source
- Safety Zone
- Pump
- Sling Site
- Camp
- Dip Site
- Division Break
- Drop Point
- Fire Origin
- Helibase
- Helispot
- Post
- Mobile Weather Unit
- Repeater
- Value at Risk
- Communities
- Non-USFS Lands adjacent to Pine Valley Ranger District
- National Wilderness Area
- Completed Line
- Road as Completed Line
- Completed Dozer Line
- Completed Hand Line
- Uncontrolled Fire Edge
- Roads and Trails
- Improved Road
- Unimproved Road
- Administrative Road
- Closed Road
- Closed Classified Trail
- Motorized Trail
- Non-Motorized Trail
- Non-Forest Road
- Non-Forest/Private Trails
- National Wilderness Area

- Point Repair Status**
- Unknown
 - Repair Needed
 - In Progress
 - Completed - Ready for Inspection
 - Completed - Inspected
 - No Repair Needed

- Line Repair Status**
- Unknown
 - Repair Needed
 - In Progress
 - Completed - Ready for Inspection
 - Completed - Inspected
 - No Repair Needed

Feature Category (Line Type)	Label	Repair Comments	Length/Foot
Completed - Inspected	DP-20		1648
Completed - Inspected	DP-21		1648
Completed - Inspected	DP-22		1648
Completed - Inspected	DP-23		1648
Completed - Inspected	DP-24		1648
Completed - Inspected	DP-25		1648
Completed - Inspected	DP-26		1648
Completed - Inspected	DP-27		1648
Completed - Inspected	DP-28		1648
Completed - Inspected	DP-29		1648
Completed - Inspected	DP-30		1648
Completed - Inspected	DP-31		1648
Completed - Inspected	DP-32		1648
Completed - Inspected	DP-33		1648
Completed - Inspected	DP-34		1648
Completed - Inspected	DP-35		1648
Completed - Inspected	DP-36		1648
Completed - Inspected	DP-37		1648
Completed - Inspected	DP-38		1648
Completed - Inspected	DP-39		1648
Completed - Inspected	DP-40		1648
Completed - Inspected	DP-41		1648
Completed - Inspected	DP-42		1648
Completed - Inspected	DP-43		1648
Completed - Inspected	DP-44		1648
Completed - Inspected	DP-45		1648
Completed - Inspected	DP-46		1648
Completed - Inspected	DP-47		1648
Completed - Inspected	DP-48		1648
Completed - Inspected	DP-49		1648
Completed - Inspected	DP-50		1648
Completed - Inspected	DP-51		1648
Completed - Inspected	DP-52		1648
Completed - Inspected	DP-53		1648
Completed - Inspected	DP-54		1648
Completed - Inspected	DP-55		1648
Completed - Inspected	DP-56		1648
Completed - Inspected	DP-57		1648
Completed - Inspected	DP-58		1648
Completed - Inspected	DP-59		1648
Completed - Inspected	DP-60		1648
Completed - Inspected	DP-61		1648
Completed - Inspected	DP-62		1648
Completed - Inspected	DP-63		1648
Completed - Inspected	DP-64		1648
Completed - Inspected	DP-65		1648
Completed - Inspected	DP-66		1648
Completed - Inspected	DP-67		1648
Completed - Inspected	DP-68		1648
Completed - Inspected	DP-69		1648
Completed - Inspected	DP-70		1648
Completed - Inspected	DP-71		1648
Completed - Inspected	DP-72		1648
Completed - Inspected	DP-73		1648
Completed - Inspected	DP-74		1648
Completed - Inspected	DP-75		1648
Completed - Inspected	DP-76		1648
Completed - Inspected	DP-77		1648
Completed - Inspected	DP-78		1648
Completed - Inspected	DP-79		1648
Completed - Inspected	DP-80		1648
Completed - Inspected	DP-81		1648
Completed - Inspected	DP-82		1648
Completed - Inspected	DP-83		1648
Completed - Inspected	DP-84		1648
Completed - Inspected	DP-85		1648
Completed - Inspected	DP-86		1648
Completed - Inspected	DP-87		1648
Completed - Inspected	DP-88		1648
Completed - Inspected	DP-89		1648
Completed - Inspected	DP-90		1648
Completed - Inspected	DP-91		1648
Completed - Inspected	DP-92		1648
Completed - Inspected	DP-93		1648
Completed - Inspected	DP-94		1648
Completed - Inspected	DP-95		1648
Completed - Inspected	DP-96		1648
Completed - Inspected	DP-97		1648
Completed - Inspected	DP-98		1648
Completed - Inspected	DP-99		1648
Completed - Inspected	DP-100		1648



Feature Category (Line Type)	Label	Repair Comments	Length/Foot
Completed - Inspected	SL-1		1648
Completed - Inspected	SL-2		1648
Completed - Inspected	SL-3		1648
Completed - Inspected	SL-4		1648
Completed - Inspected	SL-5		1648
Completed - Inspected	SL-6		1648
Completed - Inspected	SL-7		1648
Completed - Inspected	SL-8		1648
Completed - Inspected	SL-9		1648
Completed - Inspected	SL-10		1648
Completed - Inspected	SL-11		1648
Completed - Inspected	SL-12		1648
Completed - Inspected	SL-13		1648
Completed - Inspected	SL-14		1648
Completed - Inspected	SL-15		1648
Completed - Inspected	SL-16		1648
Completed - Inspected	SL-17		1648
Completed - Inspected	SL-18		1648
Completed - Inspected	SL-19		1648
Completed - Inspected	SL-20		1648
Completed - Inspected	SL-21		1648
Completed - Inspected	SL-22		1648
Completed - Inspected	SL-23		1648
Completed - Inspected	SL-24		1648
Completed - Inspected	SL-25		1648
Completed - Inspected	SL-26		1648
Completed - Inspected	SL-27		1648
Completed - Inspected	SL-28		1648
Completed - Inspected	SL-29		1648
Completed - Inspected	SL-30		1648
Completed - Inspected	SL-31		1648
Completed - Inspected	SL-32		1648
Completed - Inspected	SL-33		1648
Completed - Inspected	SL-34		1648
Completed - Inspected	SL-35		1648
Completed - Inspected	SL-36		1648
Completed - Inspected	SL-37		1648
Completed - Inspected	SL-38		1648
Completed - Inspected	SL-39		1648
Completed - Inspected	SL-40		1648
Completed - Inspected	SL-41		1648
Completed - Inspected	SL-42		1648
Completed - Inspected	SL-43		1648
Completed - Inspected	SL-44		1648
Completed - Inspected	SL-45		1648
Completed - Inspected	SL-46		1648
Completed - Inspected	SL-47		1648
Completed - Inspected	SL-48		1648
Completed - Inspected	SL-49		1648
Completed - Inspected	SL-50		1648
Completed - Inspected	SL-51		1648
Completed - Inspected	SL-52		1648
Completed - Inspected	SL-53		1648
Completed - Inspected	SL-54		1648
Completed - Inspected	SL-55		1648
Completed - Inspected	SL-56		1648
Completed - Inspected	SL-57		1648
Completed - Inspected	SL-58		1648
Completed - Inspected	SL-59		1648
Completed - Inspected	SL-60		1648
Completed - Inspected	SL-61		1648
Completed - Inspected	SL-62		1648
Completed - Inspected	SL-63		1648
Completed - Inspected	SL-64		1648
Completed - Inspected	SL-65		1648
Completed - Inspected	SL-66		1648
Completed - Inspected	SL-67		1648
Completed - Inspected	SL-68		1648
Completed - Inspected	SL-69		1648
Completed - Inspected	SL-70		1648
Completed - Inspected	SL-71		1648
Completed - Inspected	SL-72		1648
Completed - Inspected	SL-73		1648
Completed - Inspected	SL-74		1648
Completed - Inspected	SL-75		1648
Completed - Inspected	SL-76		1648
Completed - Inspected	SL-77		1648
Completed - Inspected	SL-78		1648
Completed - Inspected	SL-79		1648
Completed - Inspected	SL-80		1648
Completed - Inspected	SL-81		1648
Completed - Inspected	SL-82		1648
Completed - Inspected	SL-83		1648
Completed - Inspected	SL-84		1648
Completed - Inspected	SL-85		1648
Completed - Inspected	SL-86		1648
Completed - Inspected	SL-87		1648
Completed - Inspected	SL-88		1648
Completed - Inspected	SL-89		1648
Completed - Inspected	SL-90		1648
Completed - Inspected	SL-91		1648
Completed - Inspected	SL-92		1648
Completed - Inspected	SL-93		1648
Completed - Inspected	SL-94		1648
Completed - Inspected	SL-95		1648
Completed - Inspected	SL-96		1648
Completed - Inspected	SL-97		1648
Completed - Inspected	SL-98		1648
Completed - Inspected	SL-99		1648
Completed - Inspected	SL-100		1648



https://ftp.nrc.gov/public/inident_specific_data/great_basin/2018_incidents/2018_West_Valley/mt6map_repair



0 0.25 0.5 Miles

Projection: NAD83 UTM Zone 12
Lat-Long Grid Ticks: 1' minute interval