

112°7'30"W 112°6'0"W 112°4'30"W 112°3'0"W 112°1'30"W 112°0'0"W 111°58'30"W 111°57'0"W 111°55'30"W 111°54'0"W 111°52'30"W 111°51'0"W 111°49'30"W 111°48'0"W 111°46'30"W 111°45'0"W 111°43'30"W 111°42'0"W

Travel Map Willow Patch UT-RID-180184 07/02/2018

CENTRAL UTAH
FIRE
INTERAGENCY



Map Produced by:
M. Toone
7/1/2018 21:33 hrs

Approx. 4,711 Acres
as of 07/01/2018 1700



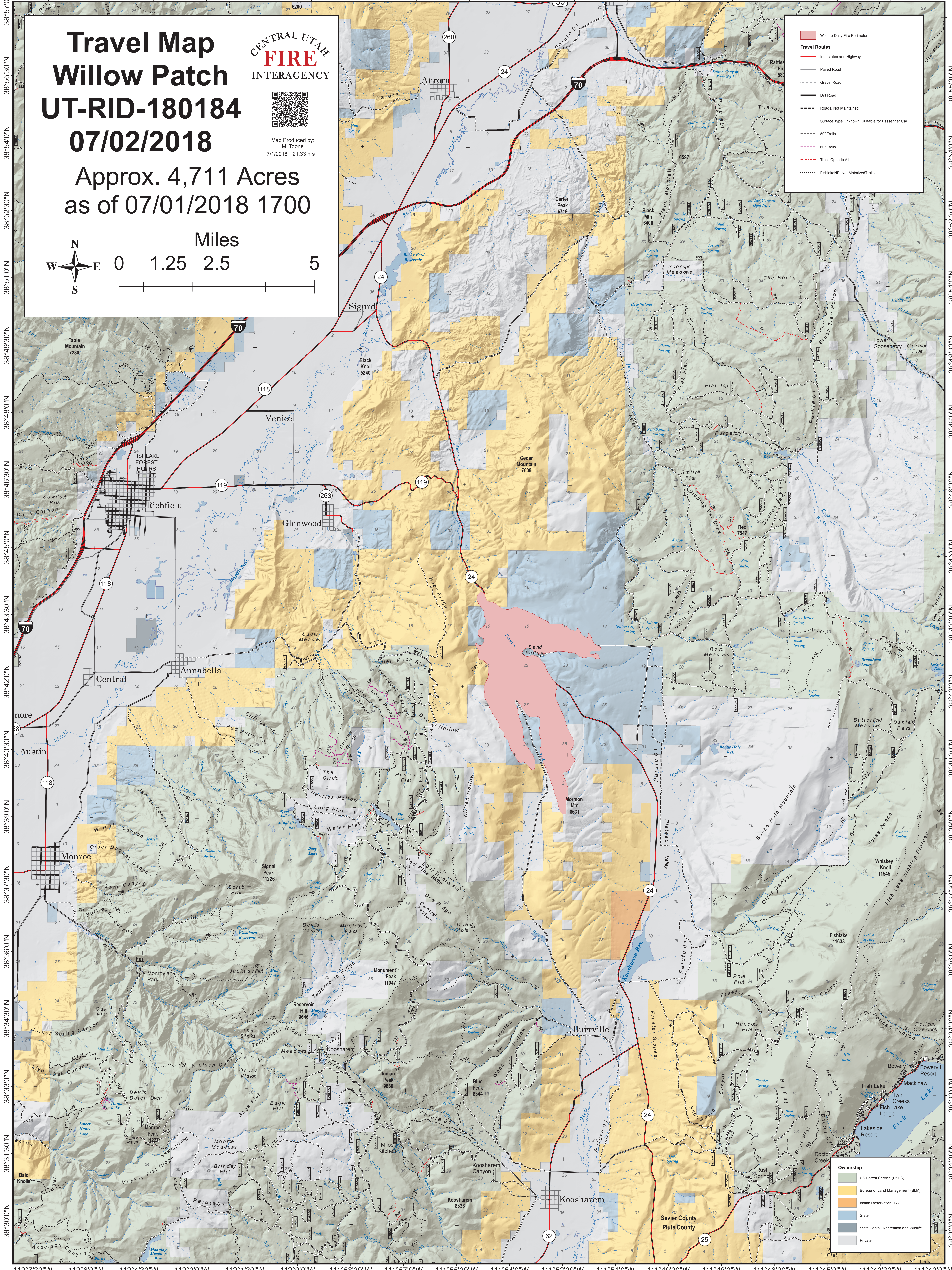
Wildfire Daily Fire Perimeter

Travel Routes

- Interstates and Highways
- Paved Road
- Gravel Road
- Dirt Road
- Roads, Not Maintained
- Surface Type Unknown, Suitable for Passenger Car
- 50' Trails
- 60' Trails
- Trails Open to All
- FishlakeNP_NonMotorizedTrails

Ownership

- US Forest Service (USFS)
- Bureau of Land Management (BLM)
- Indian Reservation (IR)
- State
- State Parks, Recreation and Wildlife
- Private



112°7'30"W 112°6'0"W 112°4'30"W 112°3'0"W 112°1'30"W 112°0'0"W 111°58'30"W 111°57'0"W 111°55'30"W 111°54'0"W 111°52'30"W 111°51'0"W 111°49'30"W 111°48'0"W 111°46'30"W 111°45'0"W 111°43'30"W 111°42'0"W