

# Briefing Map Willow Patch UT-RID-180184 07/04/2018

Approx 4,902 Acres  
as of 07/03/2018 1900 hrs

BLM: 463.3 acres  
State: 3,217.7 acres  
Private: 1,221.2 acres

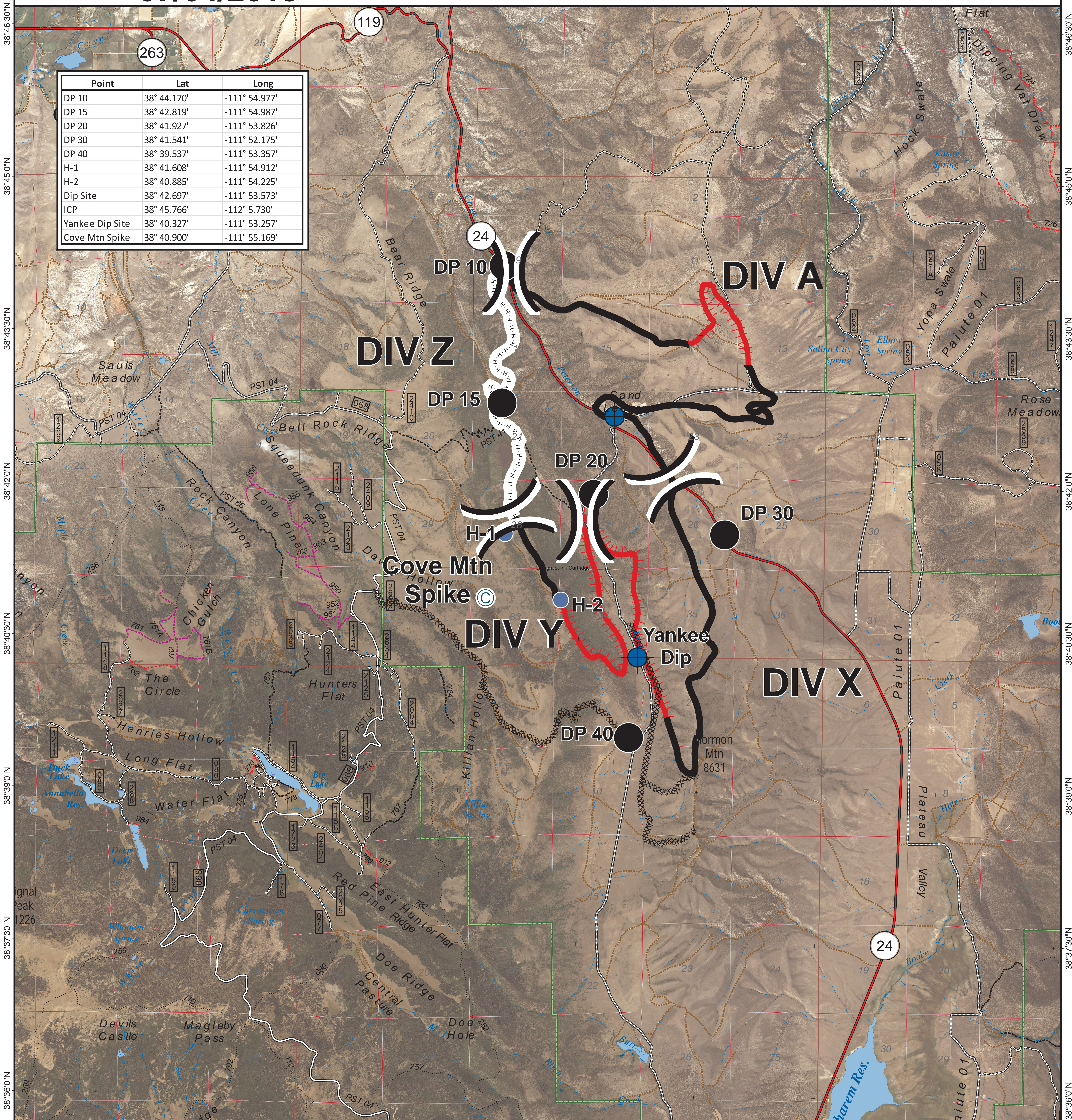
CENTRAL UTAH  
**FIRE**  
INTERAGENCY



Map Produced By:  
mtoone  
7/3/2018 22:04 hrs



Point	Lat	Long
DP 10	38° 44.170'	-111° 54.977'
DP 15	38° 42.819'	-111° 54.987'
DP 20	38° 41.927'	-111° 53.826'
DP 30	38° 41.541'	-111° 52.175'
DP 40	38° 39.537'	-111° 53.357'
H-1	38° 41.608'	-111° 54.912'
H-2	38° 40.885'	-111° 54.225'
Dip Site	38° 42.697'	-111° 53.573'
ICP	38° 45.766'	-112° 5.730'
Yankee Dip Site	38° 40.327'	-111° 53.257'
Cove Mtn Spike	38° 40.900'	-111° 55.169'



Uncontrolled Fire Edge	Dip Site	Division Break	Interstate	50 inch or less Trails
Completed Line	Drop Point	Camp	Highway	60 inch or less Trails
Completed Dozer Line	Helispot (Medivac)		Paved Road	Trails Open to All Vehicles
Completed Hand Line			Gravel Road,	Non-Motorized Trails
			Dirt Roads	Other Unverified Roads or Trails
				Forest Boundary