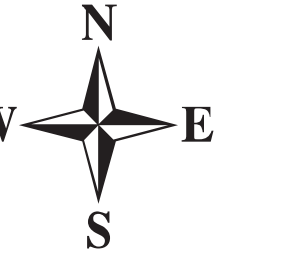


Briefing Map Willow Patch UT-RID-180184 07/04/2018

Approx 4,902 Acres
as of 07/03/2018 1900 hrs

BLM: 463.3 acres
State: 3,217.7 acres
Private: 1,221.2 acres

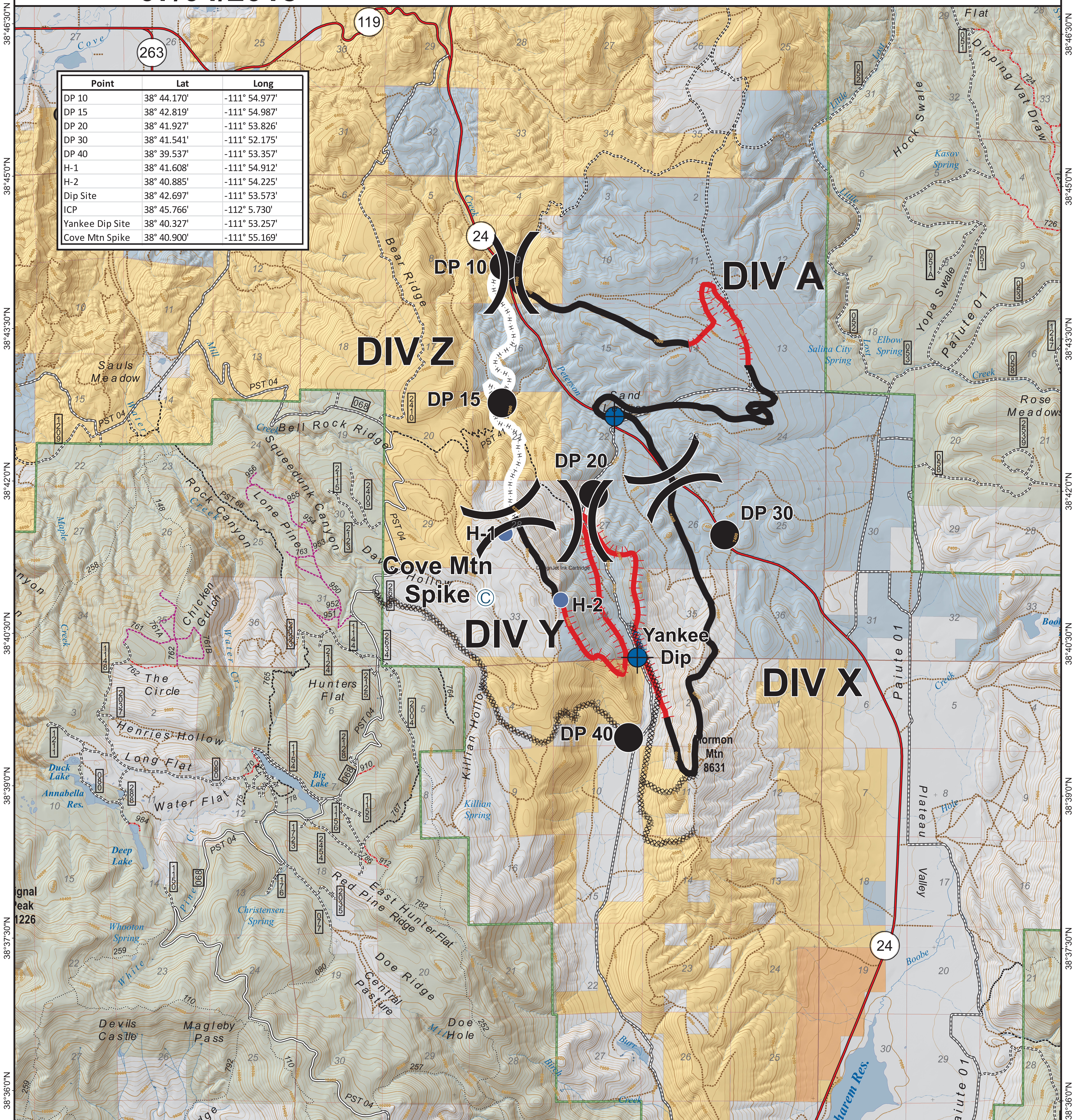
CENTRAL UTAH
FIRE
INTERAGENCY



Map Produced By:
mtoone
7/3/2018 21:46 hrs



Point	Lat	Long
DP 10	38° 44.170'	-111° 54.977'
DP 15	38° 42.819'	-111° 54.987'
DP 20	38° 41.927'	-111° 53.826'
DP 30	38° 41.541'	-111° 52.175'
DP 40	38° 39.537'	-111° 53.357'
H-1	38° 41.608'	-111° 54.912'
H-2	38° 40.885'	-111° 54.225'
Dip Site	38° 42.697'	-111° 53.573'
ICP	38° 45.766'	-112° 5.730'
Yankee Dip Site	38° 40.327'	-111° 53.257'
Cove Mtn Spike	38° 40.900'	-111° 55.169'



Legend

- US Forest Service (USFS)
- Bureau of Land Management (BLM)
- Indian Reservation (IR)
- State
- State Parks, Recreation and Wildlife
- Private
- Uncontrolled Fire Edge
- Completed Line
- Completed Dozer Line
- Completed Hand Line
- Camp
- Dip Site
- Drop Point
- Helispot (Medivac)
- Division Break
- Interstate
- Highway
- Paved Road
- Gravel Road
- Dirt Roads
- 50 inch or less Trails
- 60 inch or less Trails
- Trails Open to All Vehicles
- Non-Motorized Trails
- Other Unverified Roads or Trails
- Forest Boundary