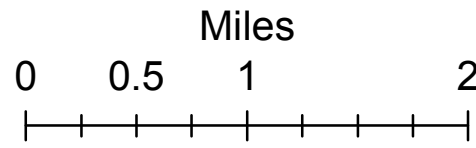


# Operations Map Willow Patch UT-RID-180184 07/04/2018

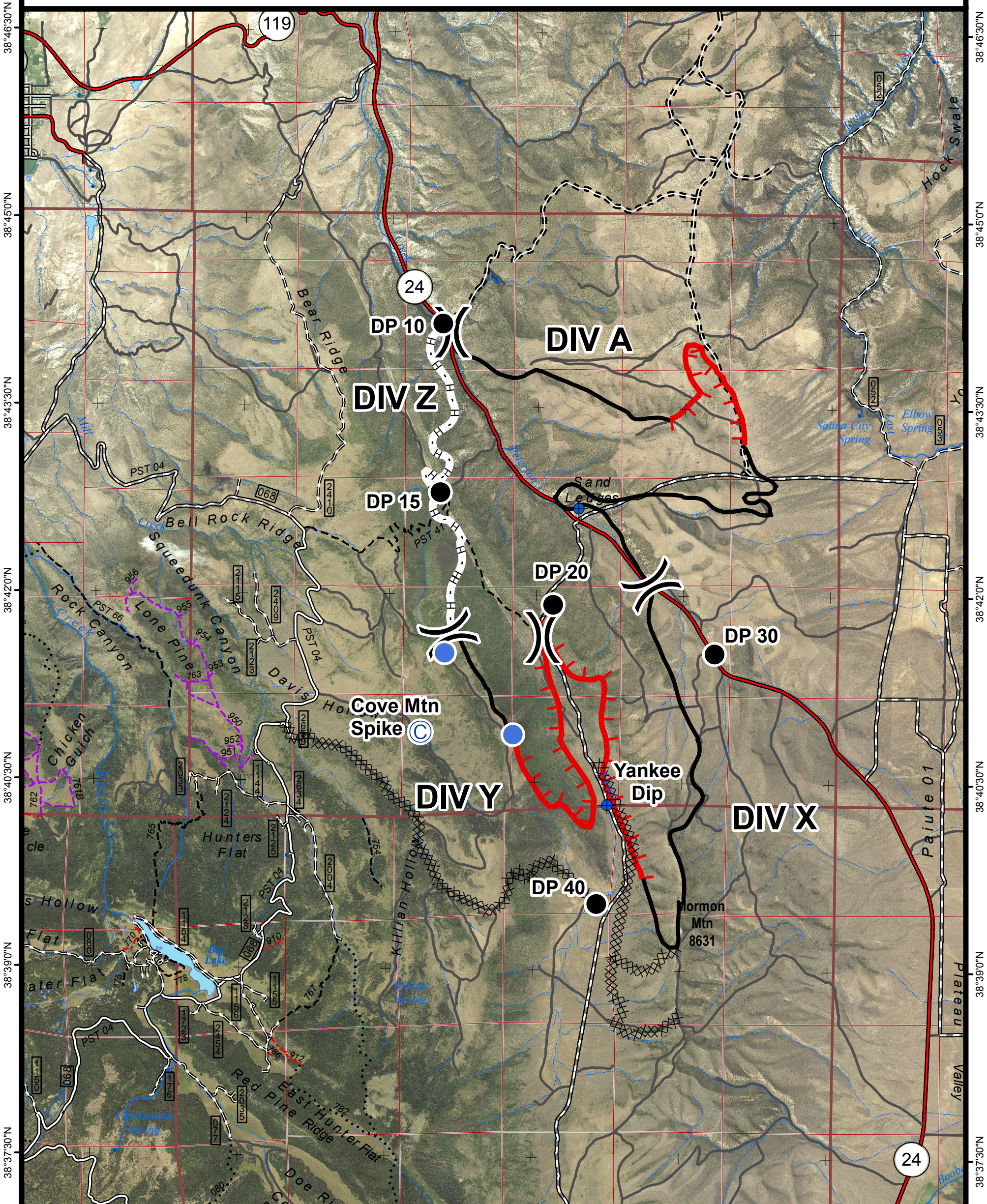
Approx 4,902 Acres  
as of 07/03/2018 1900



CENTRAL UTAH  
**FIRE**  
INTERAGENCY

Map Produced by:  
reading

7/3/2018 19:42 hrs



### Legend

- Camp
- Helispot
- Uncontrolled Fire Edge
- Dip Site
- Drop Point
- Division Break
- Completed Line
- Completed Dozer Line
- Completed Hand Line

### Travel Routes

- Interstates and Highways
- Gravel Road
- Dirt Road
- Roads, Not Maintained
- Surface Type Unknown
- 50" Trails
- 60" Trails
- Trails Open to All
- Non Motorized Trails

Point	Lat	Long
DP 10	38° 44.170'	-111° 54.977'
DP 15	38° 42.819'	-111° 54.987'
DP 20	38° 41.927'	-111° 53.826'
DP 30	38° 41.541'	-111° 52.175'
DP 40	38° 39.537'	-111° 53.357'
H-1	38° 41.608'	-111° 54.912'
H-2	38° 40.885'	-111° 54.225'
Dip Site	38° 42.697'	-111° 53.573'
ICP	38° 45.766'	-112° 5.730'
Yankee Dip Site	38° 40.327'	-111° 53.257'
Cove Mtn Spike	38° 40.900'	-111° 55.169'