

Operations Map Willow Patch UT-RID-180184 07/04/2018

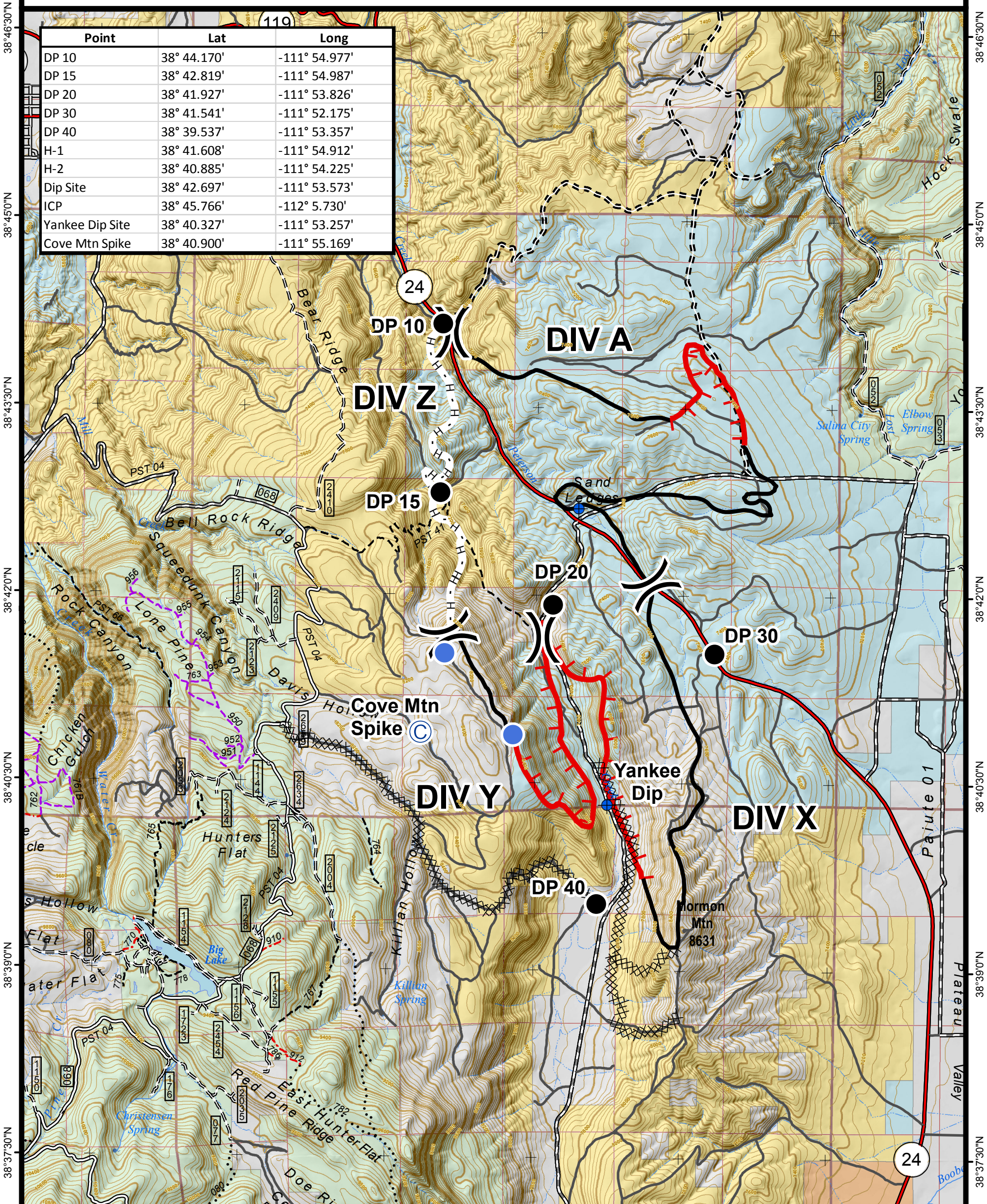
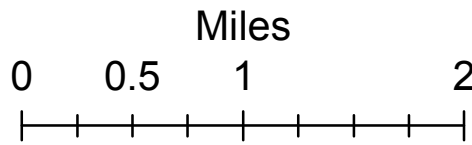
Approx 4,902 Acres
as of 07/03/2018 1900



CENTRAL UTAH
FIRE
INTERAGENCY

Map Produced by:
reading

7/3/2018 19:24 hrs



Point	Lat	Long
DP 10	38° 44.170'	-111° 54.977'
DP 15	38° 42.819'	-111° 54.987'
DP 20	38° 41.927'	-111° 53.826'
DP 30	38° 41.541'	-111° 52.175'
DP 40	38° 39.537'	-111° 53.357'
H-1	38° 41.608'	-111° 54.912'
H-2	38° 40.885'	-111° 54.225'
Dip Site	38° 42.697'	-111° 53.573'
ICP	38° 45.766'	-112° 5.730'
Yankee Dip Site	38° 40.327'	-111° 53.257'
Cove Mtn Spike	38° 40.900'	-111° 55.169'

Legend

- Camp
- Helispot
- Drop Point
- Division Break
- Uncontrolled Fire Edge
- Completed Line
- Completed Dozer Line
- Completed Hand Line

Travel Routes

- Interstates and Highways
- Gravel Road
- Dirt Road
- Roads, Not Maintained
- Surface Type Unknown
- 50" Trails
- 60" Trails
- Trails Open to All
- Non Motorized Trails

Ownership

- US Forest Service (USFS)
- Bureau of Land Management (BLM)
- Indian Reservation (IR)
- State
- State Parks, Recreation and Wildlife
- Private