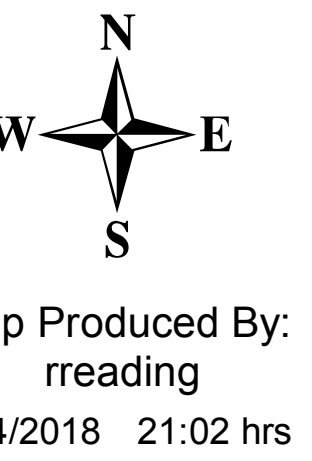


Briefing Map Willow Patch UT-RID-180184 07/05/2018

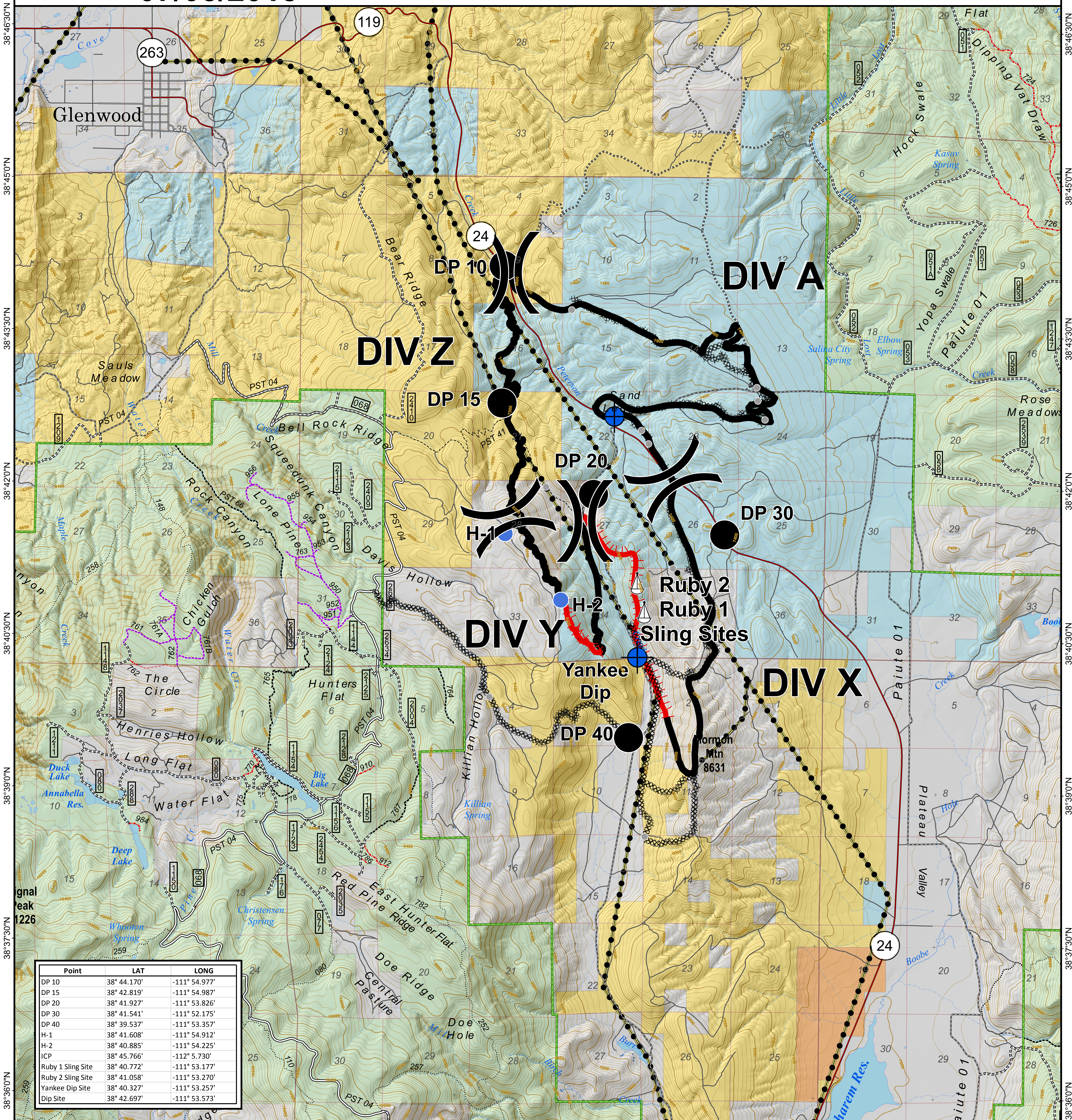
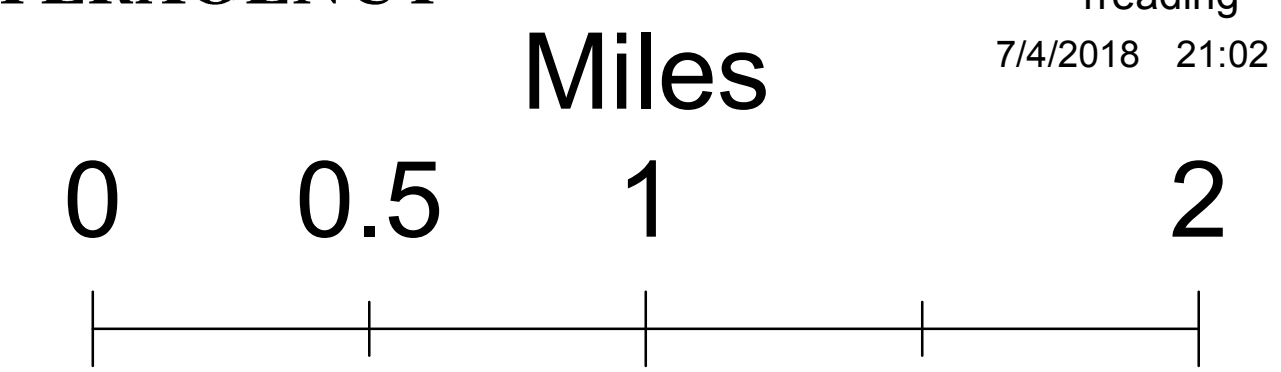
Approx 4,582.6 Acres
as of 07/04/2018 1800 hrs

BLM: 401.4 acres
State: 2,990.4 acres
Private: 1,190.4 acres

CENTRAL UTAH
FIRE
INTERAGENCY



Map Produced By:
reading
7/4/2018 21:02 hrs



Point	LAT	LONG
DP 10	38° 44.170'	-111° 54.977'
DP 15	38° 42.819'	-111° 54.987'
DP 20	38° 41.927'	-111° 53.826'
DP 30	38° 41.541'	-111° 52.175'
DP 40	38° 39.537'	-111° 53.357'
H-1	38° 41.608'	-111° 54.912'
H-2	38° 40.885'	-111° 54.225'
ICP	38° 45.766'	-112° 5.730'
Ruby 1 Sling Site	38° 40.772'	-111° 53.177'
Ruby 2 Sling Site	38° 41.058'	-111° 53.270'
Yankee Dip Site	38° 40.327'	-111° 53.257'
Dip Site	38° 42.697'	-111° 53.573'

Legend

- Interstates and Highways
- Paved Road
- Gravel Road
- Dirt Road
- Roads, Not Maintained
- Surface Type Unknown
- 50" Trails
- 60" Trails
- Trails Open to All
- Non-Motorized Trails
- Power Transmission Lines
- Uncontrolled Fire Edge
- Completed Line
- Completed Dozer Line
- Sling Site
- Camp
- Dip Site
- Drop Point
- Helispot (Medivac)
- Division Break
- Forest Boundary
- US Forest Service (USFS)
- Bureau of Land Management (BLM)
- Indian Reservation (IR)
- State
- State Parks, Recreation and Wildlife
- Private