

Operations Map Willow Patch UT-RID-180184 07/05/2018

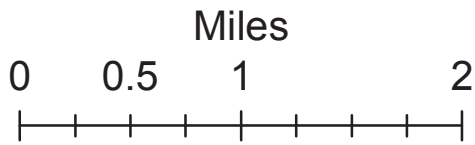
Approx 4,582.6 Acres
as of 07/04/2018 1800



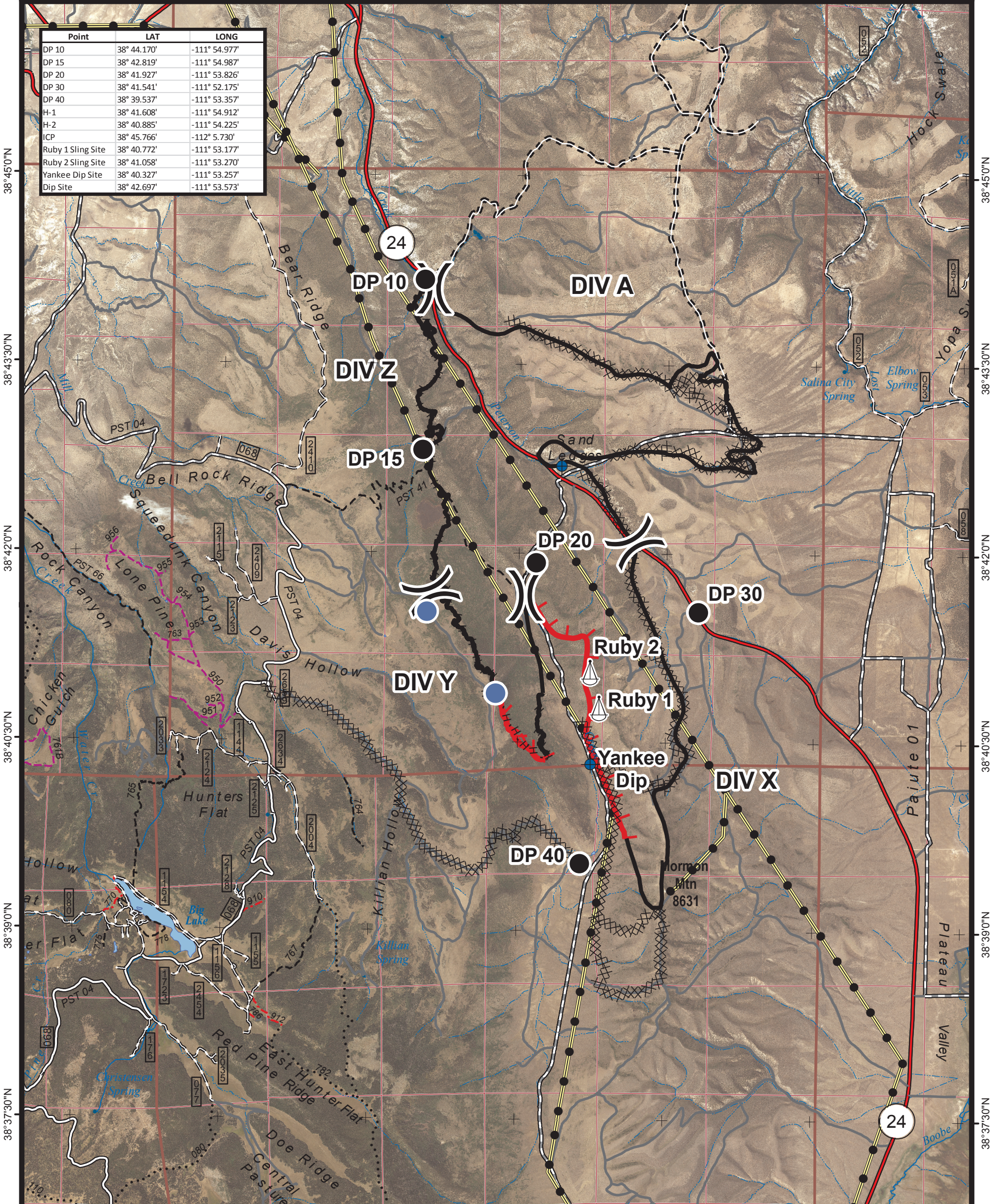
CENTRAL UTAH
FIRE
INTERAGENCY

Map Produced by:
M.Toone

7/4/2018 20:57 hrs



Point	LAT	LONG
DP 10	38° 44.170'	-111° 54.977'
DP 15	38° 42.819'	-111° 54.987'
DP 20	38° 41.927'	-111° 53.826'
DP 30	38° 41.541'	-111° 52.175'
DP 40	38° 39.537'	-111° 53.357'
H-1	38° 41.608'	-111° 54.912'
H-2	38° 40.885'	-111° 54.225'
ICP	38° 45.766'	-112° 5.730'
Ruby 1 Sling Site	38° 40.772'	-111° 53.177'
Ruby 2 Sling Site	38° 41.058'	-111° 53.270'
Yankee Dip Site	38° 40.327'	-111° 53.257'
Dip Site	38° 42.697'	-111° 53.573'



Dip Site	Uncontrolled Fire Edge	Powerline	Travel Routes
Drop Point	Completed Line	Sling Site	Interstates and Highways
Helispot	Completed Dozer Line	Division Break	Gravel Road
			Dirt Road
			Roads, Not Maintained
			Surface Type Unknown
			50" Trails
			60" Trails
			Trails Open to All
			FS Non-Motorized Trails