

# Operations Map Willow Patch UT-RID-180184 07/05/2018

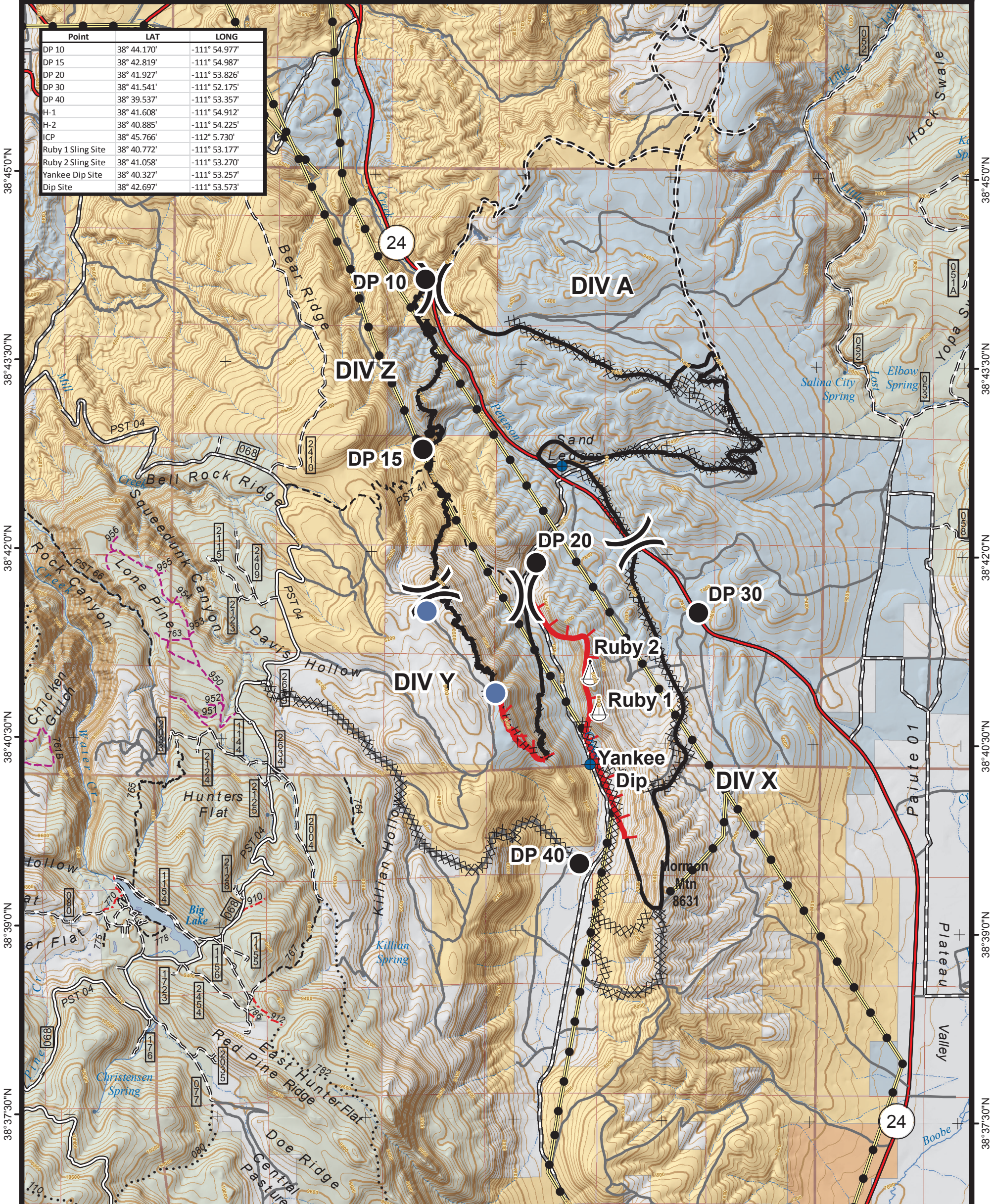
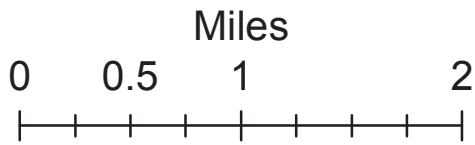
Approx 4,582.6 Acres  
as of 07/04/2018 1800



CENTRAL UTAH  
**FIRE**  
INTERAGENCY

Map Produced by:  
M. Toone

7/4/2018 20:48 hrs



Point	LAT	LONG
DP 10	38° 44.170'	-111° 54.977'
DP 15	38° 42.819'	-111° 54.987'
DP 20	38° 41.927'	-111° 53.826'
DP 30	38° 41.541'	-111° 52.175'
DP 40	38° 39.537'	-111° 53.357'
H-1	38° 41.608'	-111° 54.912'
H-2	38° 40.885'	-111° 54.225'
ICP	38° 45.766'	-112° 5.730'
Ruby 1 Sling Site	38° 40.772'	-111° 53.177'
Ruby 2 Sling Site	38° 41.058'	-111° 53.270'
Yankee Dip Site	38° 40.327'	-111° 53.257'
Dip Site	38° 42.697'	-111° 53.573'

38° 45'0"N  
38° 43'30"N  
38° 42'0"N  
38° 40'30"N  
38° 39'0"N  
38° 37'30"N

108° 30'0"W  
108° 28'30"W  
108° 27'0"W  
108° 25'30"W  
108° 24'0"W  
108° 22'30"W

Dip Site	Uncontrolled Fire Edge	<b>Travel Routes</b>	50" Trails	<b>Ownership</b>
Drop Point	Completed Line	Interstates and Highways	60" Trails	US Forest Service (USFS)
Helispot	Completed Dozer Line	Gravel Road	Trails Open to All	Bureau of Land Management (BLM)
Division Break	Powerline	Dirt Road	FS Non-Motorized Trails	Indian Reservation (IR)
	Sling Site	Roads, Not Maintained		State
		Surface Type Unknown		State Parks, Recreation and Wildlife
				Private