

111°58'30"W

111°57'0"W

111°55'30"W

111°54'0"W

111°52'30"W

111°51'0"W

111°49'30"W

Operations Map

Willow Patch

UT-RID-180184

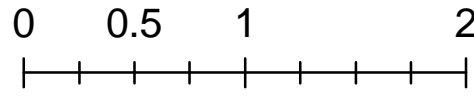
07/07/2018

Approx 4,582.6 Acres
as of 07/04/2018 1800



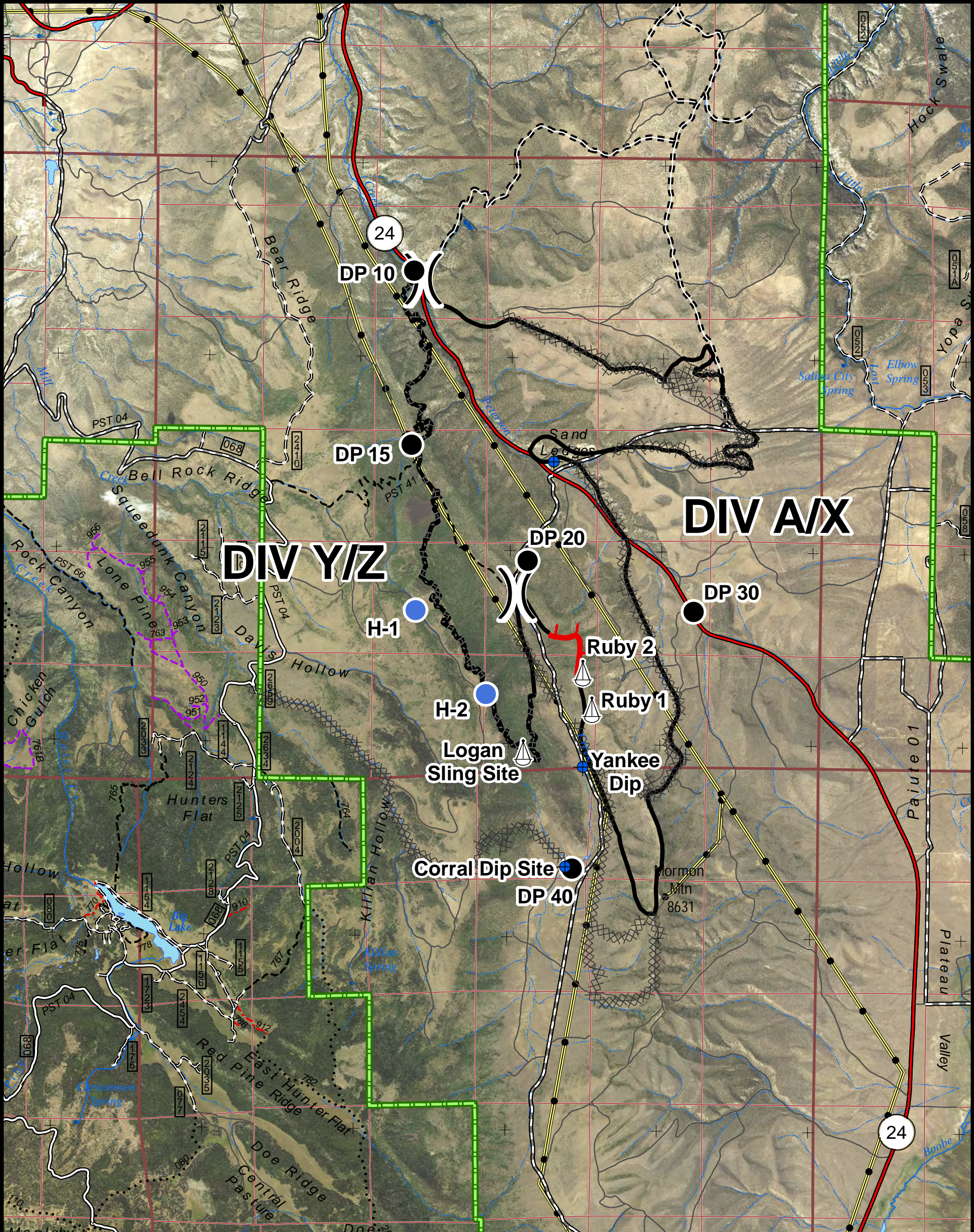
Map Produced By:
reading
7/6/2018 19:22 hrs

Miles



38°46'30"N
38°45'0"N
38°43'30"N
38°42'0"N
38°40'30"N
38°40'0"N
38°39'0"N
38°37'30"N
38°36'0"N

38°46'30"N
38°45'0"N
38°43'30"N
38°42'0"N
38°40'30"N
38°40'0"N
38°39'0"N
38°37'30"N
38°36'0"N



DIV Y/Z

DIV A/X

Travel Routes

- Interstates and Highways
- Paved Road
- Gravel Road
- Dirt Road
- Roads, Not Maintained
- Surface Type Unknown
- 50" Trails
- 60" Trails
- Trails Open to All
- FS Non-Motorized Trails
- Power Transmission Line
- Forest Boundary

- Uncontrolled Fire Edge
- Completed Line
- Completed Dozer Line
- Completed Hand Line
- Division Break

- Dip Site
- Drop Point
- Helispot
- Sling Site

Point	Lat	Long
Dip Site	38° 42.697'	-111° 53.573'
Yankee Dip Site	38° 40.327'	-111° 53.257'
Corral Dip Site	38° 39.553'	-111° 53.427'
DP 10	38° 44.170'	-111° 54.977'
DP 20	38° 41.927'	-111° 53.826'
DP 30	38° 41.541'	-111° 52.175'
DP 15	38° 42.819'	-111° 54.987'
DP 40	38° 39.537'	-111° 53.357'
H-1	38° 41.608'	-111° 54.912'
H-2	38° 40.885'	-111° 54.225'
Ruby 2 Sling Site	38° 41.058'	-111° 53.270'
Ruby 1 Sling Site	38° 40.772'	-111° 53.177'
Logan Sling Site	38° 40.436'	-111° 53.853'

111°58'30"W

111°57'0"W

111°55'30"W

111°54'0"W

111°52'30"W

111°51'0"W

111°49'30"W