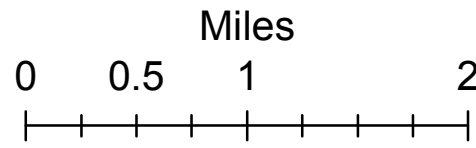


Operations Map Willow Patch UT-RID-180184 07/07/2018

Approx 4,582.6 Acres
as of 07/04/2018 1800

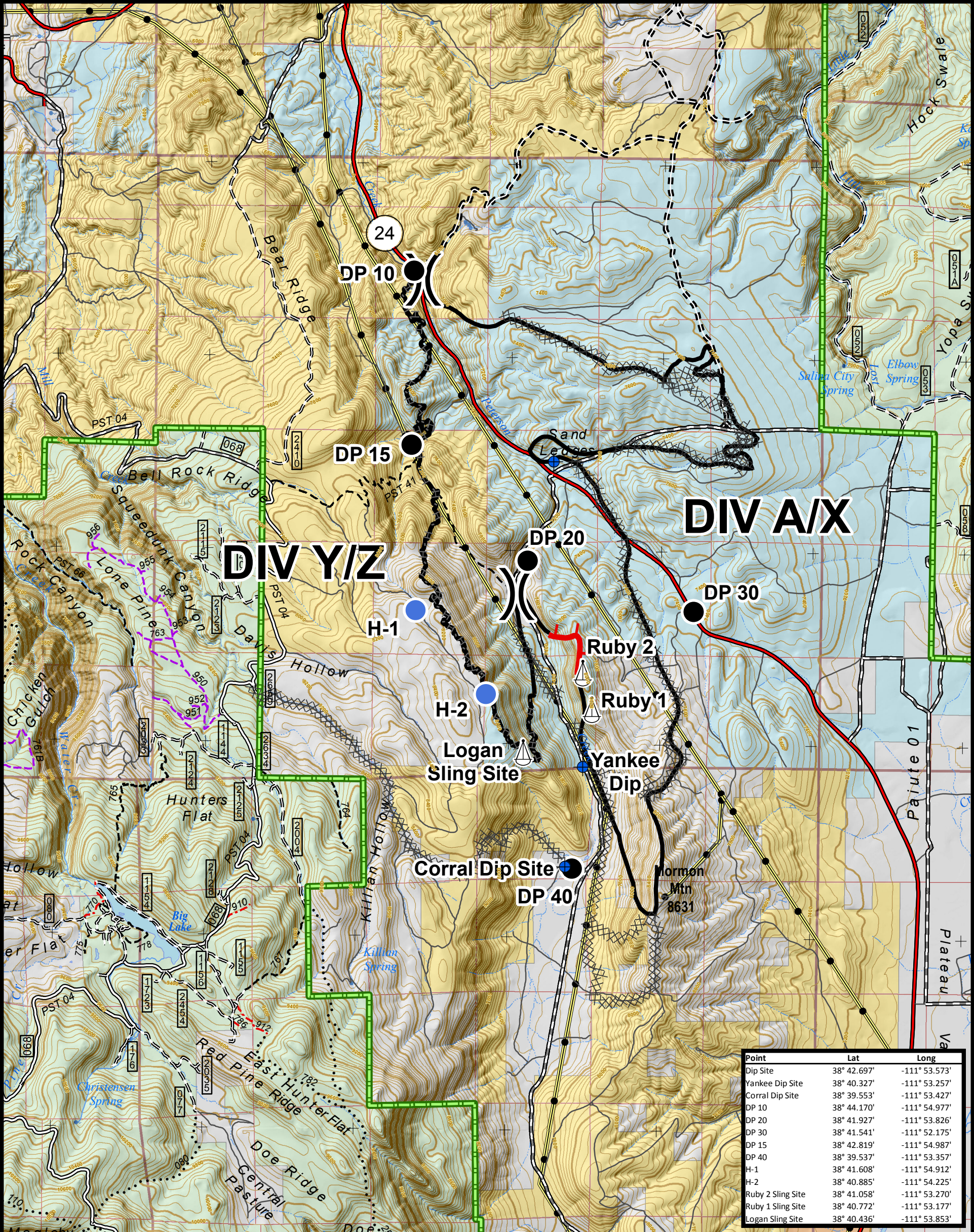


CENTRAL UTAH
FIRE
INTERAGENCY

Map Produced By:
reading
7/6/2018 19:20 hrs

38°46'30"N
38°45'0"N
38°43'30"N
38°42'0"N
38°40'30"N
38°39'0"N
38°37'30"N
38°36'0"N

38°46'30"N
38°45'0"N
38°43'30"N
38°42'0"N
38°40'30"N
38°39'0"N
38°37'30"N
38°36'0"N



Point	Lat	Long
Dip Site	38° 42.697'	-111° 53.573'
Yankee Dip Site	38° 40.327'	-111° 53.257'
Corral Dip Site	38° 39.553'	-111° 53.427'
DP 10	38° 44.170'	-111° 54.977'
DP 20	38° 41.927'	-111° 53.826'
DP 30	38° 41.541'	-111° 52.175'
DP 15	38° 42.819'	-111° 54.987'
DP 40	38° 39.537'	-111° 53.357'
H-1	38° 41.608'	-111° 54.912'
H-2	38° 40.885'	-111° 54.225'
Ruby 2 Sling Site	38° 41.058'	-111° 53.270'
Ruby 1 Sling Site	38° 40.772'	-111° 53.177'
Logan Sling Site	38° 40.436'	-111° 53.853'

Travel Routes	Uncontrolled Fire Edge	Dip Site	US Forest Service (USFS)
Interstates and Highways	Completed Line	Drop Point	Bureau of Land Management (BLM)
Paved Road	Completed Dozer Line	Helispot	Indian Reservation (IR)
Gravel Road	Completed Hand Line	Sling Site	State
Dirt Road	Division Break		State Parks, Recreation and Wildlife
Roads, Not Maintained			Private
Surface Type Unknown			
50' Trails			
60' Trails			
Trails Open to All			
FS Non-Motorized Trails			
Power Transmission Line			
Forest Boundary			