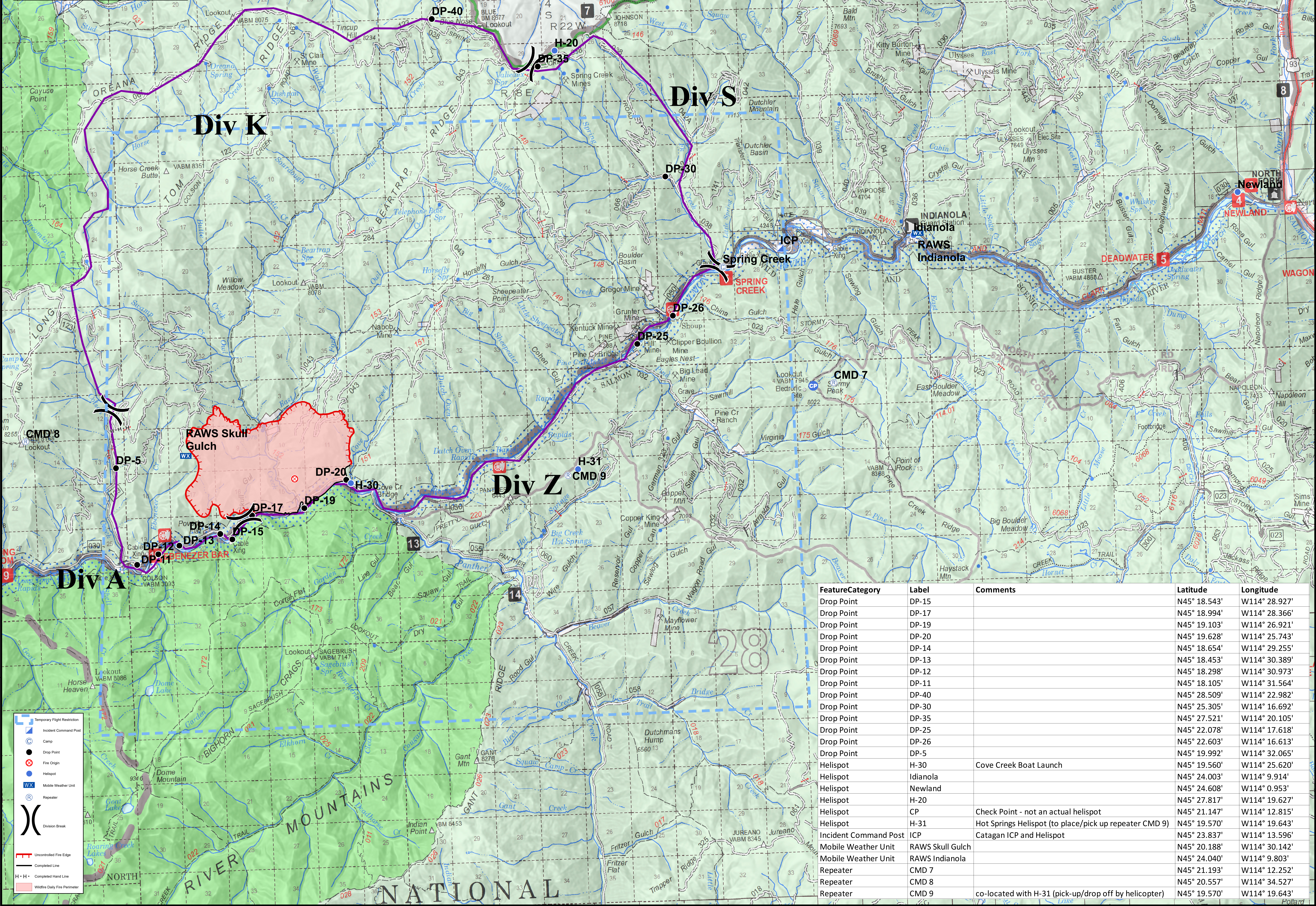


Cove Creek
 ID-SCF-019218
 08/13/2019
 4,394 Acres
 as of 8/10/19, 1100 Hrs



Team 7



Legend

- Temporary Flight Restriction
- Incident Command Post
- Camp
- Drop Point
- Fire Origin
- Helispot
- Mobile Weather Unit
- Repeater
- Division Break
- Uncontrolled Fire Edge
- Completed Hand Line
- Wildfire Daily Fire Perimeter

Feature	Category	Label	Comments	Latitude	Longitude
Drop Point	Drop Point	DP-15		N45° 18.543'	W114° 28.927'
Drop Point	Drop Point	DP-17		N45° 18.994'	W114° 28.366'
Drop Point	Drop Point	DP-19		N45° 19.103'	W114° 26.921'
Drop Point	Drop Point	DP-20		N45° 19.628'	W114° 25.743'
Drop Point	Drop Point	DP-14		N45° 18.654'	W114° 29.255'
Drop Point	Drop Point	DP-13		N45° 18.453'	W114° 30.389'
Drop Point	Drop Point	DP-12		N45° 18.298'	W114° 30.973'
Drop Point	Drop Point	DP-11		N45° 18.105'	W114° 31.564'
Drop Point	Drop Point	DP-40		N45° 28.509'	W114° 22.982'
Drop Point	Drop Point	DP-30		N45° 25.305'	W114° 16.692'
Drop Point	Drop Point	DP-35		N45° 27.521'	W114° 20.105'
Drop Point	Drop Point	DP-25		N45° 22.078'	W114° 17.618'
Drop Point	Drop Point	DP-26		N45° 22.603'	W114° 16.613'
Drop Point	Drop Point	DP-5		N45° 19.992'	W114° 32.065'
Helispot	Helispot	H-30	Cove Creek Boat Launch	N45° 19.560'	W114° 25.620'
Helispot	Helispot	Idianola		N45° 24.003'	W114° 9.914'
Helispot	Helispot	Newland		N45° 24.608'	W114° 0.953'
Helispot	Helispot	H-20		N45° 27.817'	W114° 19.627'
Helispot	Helispot	CP	Check Point - not an actual helispot	N45° 21.147'	W114° 12.815'
Helispot	Helispot	H-31	Hot Springs Helispot (to place/pick up repeater CMD 9)	N45° 19.570'	W114° 19.643'
Incident Command Post	Incident Command Post	ICP	Catagan ICP and Helispot	N45° 23.837'	W114° 13.596'
Mobile Weather Unit	Mobile Weather Unit	RAWS Skull Gulch		N45° 20.188'	W114° 30.142'
Mobile Weather Unit	Mobile Weather Unit	RAWS Idianola		N45° 24.040'	W114° 9.803'
Repeater	Repeater	CMD 7		N45° 21.193'	W114° 12.252'
Repeater	Repeater	CMD 8		N45° 20.557'	W114° 34.527'
Repeater	Repeater	CMD 9	co-located with H-31 (pick-up/drop off by helicopter)	N45° 19.570'	W114° 19.643'