

# **COVE CREEK FIRE**

## **INCIDENT ACTION PLAN**



**GREAT BASIN TEAM 7**



**ID-SCF-019218**

**AUGUST 9, 2019**

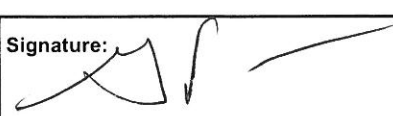
**P4MJ90**

**DAY- 0600-2000**

## INCIDENT OBJECTIVES (ICS 202)

<b>1. Incident Name:</b>		<b>2. Operational Period: DAY</b>	
COVE CREEK		Date/Time From: 08/09/2019 0600      FRI	Date/Time To: 08/09/2019 2000      FRI
<b>3. Objective(s):</b>			
<b>Course Of Action:</b>			
<ul style="list-style-type: none"> <li>• Full suppression utilizing direct, indirect and point protection.</li> </ul>			
<b>Incident Objectives:</b>			
<ul style="list-style-type: none"> <li>• Ensure all operations reflect a commitment to incident personnel and public safety commensurate with the values at risk and probability of success.</li> <li>• Implement reasonable efforts to keep the fire north of the Salmon River, west of Spring Creek, and east of Colson Creek.</li> <li>• Minimize impacts to private property, habitat of protected species, cultural and archeological sites.</li> <li>• Provide safe access along the Salmon River road for both firefighters and the public.</li> <li>• Ensure prompt and accurate communication that fosters discussion and encourages interaction with hosting agencies.</li> <li>• Focus public information actions to enhance relationships with landowners, cooperators and the public.</li> </ul>			
<b>Desired End State:</b>			
<ul style="list-style-type: none"> <li>• The fire is suppressed and values at risk protected using the appropriate resources to implement tactics in locations with reasonable probabilities of success. At the conclusion of the incident, there will have been no serious accidents or injuries, all suppression damage will have been repaired, and the cooperator and public relationships will have been enhanced.</li> </ul>			
<b>4. Operational Period Command Emphasis:</b>			
<ul style="list-style-type: none"> <li>• Utilize all your resources to anticipate possible challenges</li> </ul>			
<b>General Situational Awareness:</b>			
<b>5. Site Safety Plan Required?</b> Yes <input type="checkbox"/> No <input checked="" type="checkbox"/>			
<b>Approved Site Safety Plan(s) Located at:</b>			
<b>6. Incident Action Plan</b> (the items checked below are included in this Incident Action Plan):			
<input checked="" type="checkbox"/> ICS 202	<input type="checkbox"/> ICS 207	Other Attachments:	
<input checked="" type="checkbox"/> ICS 203	<input type="checkbox"/> ICS 208	<input checked="" type="checkbox"/> RESOURCE ADVISOR _____	
<input checked="" type="checkbox"/> ICS 204	<input checked="" type="checkbox"/> ICS 220	<input checked="" type="checkbox"/> SUPPLY ORDER _____	
<input checked="" type="checkbox"/> ICS 205	<input checked="" type="checkbox"/> Map/Chart	<input type="checkbox"/> _____	
<input type="checkbox"/> ICS 205A	<input checked="" type="checkbox"/> Weather Forecast/Tides/Currents	<input type="checkbox"/> _____	
<input checked="" type="checkbox"/> ICS 206			
<b>7. Prepared by:</b> GARY PECK		<b>Position/Title:</b> PSC2	<b>Signature:</b> 
<b>8. Approved by Incident Commander:</b>		<b>Name:</b> JEFF KNUDSON	<b>Signature:</b> 
ICS 202	IAP Page	<b>Date/Time:</b> 08/08/2019 2100	

## ORGANIZATION ASSIGNMENT LIST (ICS 203)

<b>1. Incident Name:</b>		<b>2. Operational Period:</b> DAY	
COVE CREEK		Date/Time From: 08/09/2019 0600	Date/Time To: 08/09/2019 2000 FRI
<b>3. Incident Commander(s) and Command Staff:</b>			
IC/UC	KNUDSON, JEFF	<b>7. Operations Section:</b>	
SAFETY OFFICER	BEDKE, JEFF ERICKSON TONY (T)	OPS SECTION CHIEF	CHUNG, QUINCY; BOSS, MATT (T)
INFORMATION OFFICER	BROYLES, GEORGE DARBOVEN, ERIN	PLANNING OPS	JACKSON, GREG
LIAISON OFFICER	PETERSON, STEVE ACARREGUI, STEVEN	DIVISION/GROUP	A CUNNINGHAM, CRAIG MASON, CHRIS (T)
<b>4. Agency/Organization Representative(s):</b>		DIVISION/GROUP	K PETRAY, DOUG COVALT, BEN (T)
<b>Agency/Organization</b>	<b>Name</b>	DIVISION/GROUP	S CATLIN, AUSTIN DONATI, TALLYN (T)
FOREST SERVICE	POVIRK, KYRA	DIVISION/GROUP	Z BISHOP, JIM LOVELESS, NICK (T)
IDL	BROWN, PAT	<b>7b. Air Operations Branch:</b>	
LEMHI COUNTY SHERIFF	PENNER, STEVE	AIR OPS BRANCH DIRECTOR	MUNSON, GARY
FS READ	BACK, JEREMY EBY, NATHAN; MARIN, DEREK	AIR ATTACK SUPERVISOR	MUELLEN, STEVE DOGGETT, TYLER
<b>5. Planning Section:</b>		AIR SUPPORT SUPERVISOR	BROTHERS, TYLER
CHIEF	PECK, GARY	HELIBASE MANAGER	WISNER, MARK
SITUATION UNIT	MATTFELDT, MIKE	<b>8. Finance/Administration Section:</b>	
RESOURCES UNIT	BURLESON, WADE PETTIGREW, CRAIG	CHIEF	CRILL, KELIN
DEMOBILIZATION UNIT	DODGE, SANDY	TIME UNIT	MONTOYA-NEVES, THELESA WHARTON, CINDY (T)
STATUS CHECK-IN	MEYERS, HANNE	EQTR	MINNOOK, TAMARA
FIRE BEHAVIOR ANALYST	BARTEL, DAN	PTRC	MARTIN, JUDY
GIS SPECIALIST	EHLER, B; BRAUN, C BARAGONA, M: (T) GILBERT, J (T)	COMPENSATION UNIT	MCCABE, GLORIA
TECHNOLOGY SUPPORT SPECIALIST	CAPPS, IVAN BALLARD, LANDIN	COST UNIT	PIPER, LEE
INCIDENT METEOROLOGIST	WILLIAMS, DEREK	ICPI	PIAZZA, MIKE
LTAN	COLLINS, CHIP KAFKA, JOE (T)		
<b>6. Logistics Section:</b>			
CHIEF	SWENSON, TRACY		
DEPUTY	LANGFORD, JUSTIN		
SUPPLY UNIT	WHARTON, TJ		
FACILITIES UNIT	HUGHES, LEE		
FOOD UNIT	NORMAN, VAL		
GROUND SUPPORT UNIT	HADLEY, DOUG		
COMMUNICATIONS UNIT	REED, MIKE		
MEDICAL UNIT	PICKERING, DALE		
SECURITY UNIT	DIPPEL, CRIS		
ORDERING MANAGER	FLANDERS, KIM		
<b>9. Prepared By:</b>	Name: GARY PECK	Position/Title: PSC2	Signature: 
ICS 203	IAP Page	Date/Time: 08/08/2019 2100	



# Fire Weather Forecast

**FORECAST NO: 3**  
**PREDICTION FOR: Day Shift**  
**DATE: August 9<sup>th</sup>, 2019**  
**FORECAST ISSUED: 1900 August 8<sup>th</sup>, 2019**

**NAME OF FIRE: Cove Creek**  
**UNIT: Salmon-Challis NF**  
**Incident Meteorologist: Derek Williams**  
**Signed:** *Derek Williams*

**WEATHER DISCUSSION:** Light showers will diminish through the morning hours. A few breaks in the clouds are expected before isolated showers and thunderstorms develop in the afternoon. Gusty and erratic outflow winds cloud to ground lightning will be the primary concerns. Expect southwest winds through the day along ridgetops with much lighter winds in valleys and canyons along with excellent overnight relative humidity recoveries.

**TODAY:** ***\*\*Gusty outflow winds expected with showers/thunderstorms\*\****

**WEATHER:** Mostly cloudy. Isolated showers and thunderstorms in the afternoon.

**TEMPERATURES:** (3500 ft.): 78-82 (2-3° cooler)      **HUMIDITY:** (3500 ft.): 30-35% (5% higher)  
(6000 ft.): 69-73 (2-3° cooler)      (6000 ft.): 35-40% (5% higher)

**20 FT WINDS:**

**Valleys:** Light and variable before 1100 transitioning to upslope/upvalley in the afternoon to 3-6 mph. Aligned valleys, canyons and slopes will see stronger southwest winds in the afternoon.

**Ridges:** Southwest wind around 10 mph in the morning with gusts to 20 mph in the afternoon.

**CWR (>0.10 of an inch):** 10%.

**LIGHTNING ACTIVITY LEVEL:** 3.

**HAINES INDEX:** 3 (low).

**INVERSION:** Inversion breaking around 1100.

**TONIGHT:**

**WEATHER:** Mostly cloudy with isolated showers and thunderstorms before 2100, diminishing overnight.

**TEMPERATURES:** (3500 ft.): 57-60 (1-2° warmer)      **HUMIDITY:** (3500 ft.): 70-90% (little change)  
(6000 ft.): 56-59 (1° cooler)      (6000 ft.): 65-75% (5% lower)

**20 FT WINDS:**

**Valleys:** Becoming light and variable.

**Ridges:** South around 10 mph.

**CWR (>0.10 of an inch):** 5%.

**LIGHTNING ACTIVITY LEVEL:** 3.

**SATURDAY:** ***\*\*Gusty outflow winds expected with showers/thunderstorms\*\****

**WEATHER:** Mostly cloudy. Scattered showers and isolated thunderstorms in the afternoon.

**TEMPERATURES:** (3500 ft.): 76-80 (2-3° cooler)      **HUMIDITY:** (3500 ft.): 35-40% (5% higher)  
(6000 ft.): 65-70 (3° cooler)      (6000 ft.): 40-45% (5% higher)

**20 FT WINDS:**

**Valleys:** Downslope/downvalley 2-4 mph before 1100 transitioning to upslope/upvalley in the afternoon to 4-7 mph. Aligned valleys, canyons and slopes will see stronger southwest winds in the afternoon.

**Ridges:** South to southwest 10-15 mph with gusts to 25 mph.

**CWR (>0.10 of an inch):** 50%.

**LIGHTNING ACTIVITY LEVEL:** 4.

**HAINES INDEX:** 3 (low).

**EXTENDED OUTLOOK: Sunday through Wednesday:** Precipitation chances diminish Sunday as the disturbance moves eastward with dry conditions settling in for early next week. Temperatures begin to rise Monday with 80s for highs and lower RH returning for Tuesday. A slight chance for showers exists Wednesday as the warming trend continues. Winds will gradually diminish through Wednesday.

## FIRE BEHAVIOR FORECAST

<b>FORECAST NUMBER:</b> 03	<b>TYPE OF FIRE:</b> Wildfire
<b>FIRE NAME:</b> Cove Creek	<b>OPERATIONAL PERIOD:</b> Day
<b>DATE ISSUED:</b> 08/08/2019	<b>TIME ISSUED:</b> 2000
<b>UNIT:</b> ID-SCF-019218	<b>SIGNED:</b> <u>Dan Bartel</u>
	<b>Typed/printed:</b> Dan Bartel

### INPUTS

#### WEATHER SUMMARY:

Isolated thunderstorms are possible, outflow winds from thunderstorms will have the potential to cause rapid rates of spread.

### OUTPUTS

#### FIRE BEHAVIOR

##### GENERAL:

Winds out of the South-Southwest will move the fire North-Northeast, starting light in the morning hours increasing in the afternoon. Greener fuels at higher elevations will hamper fire spread to the North. Grasses at lower elevations that are fully cured can lead to rapid rates of spread. Low Fuel Moistures in 1000hr fuels will allow the fire to spread throughout the night. Short-range spotting is likely at ridgetop in patches of mixed conifer.

Haines Index: 3 Low

PIG: 60%

##### SPECIFIC:

**DIV A:** The fire will be a flanking/backing fire with southern dominated winds, the fire will continue to burn into the main Salmon corridor and Skull Gulch with 1 to 2-foot flame lengths.

**DIV K:** Winds will align with Owl and East Owl Creek moving the fire up canyon upslope producing 6 to 8-foot flames. Possible afternoon thunderstorms could produce wind gusts of 40mph resulting in rapid rates of spread during thunderstorms.

**DIV S:** Winds will align with Cove Creek and the Main Salmon River corridor moving the fire up canyon/upslope. Possible afternoon thunderstorms could produce wind gusts of 40mph resulting in rapid rates of spread during thunderstorms.

**DIV Z:** The Fire will be a flanking /backing fire with the southern dominated winds. This area of the fire will continue to burn into the main Salmon corridor with 1 to 2-foot flame lengths.

##### AIR OPERATIONS:

The inversion over the fire should lift by 1100.

Afternoon thunderstorms could affect air operations with possible wind gusts in excess of 40 MPH

### SAFETY

Steep slopes and rolling debris pose a high risk in the Salmon River Breaks. Slopes within the fire, range from 30 to 70 percent in slope.

## Division/Group Assignment List (ICS 204 WF)

Controlled Unclassified Information//Basic

<b>1. Incident Name:</b>			<b>3.</b>			
COVE CREEK			<b>Branch:</b>		<b>Division/Group:</b>	
<b>2. Operational Period: DAY</b>					<b>A</b>	
Date/Time From: 08/09/2019 0600 FRI	Date/Time To: 08/09/2019 2000 FRI					
<b>4. Operations Personnel</b>						
<b>OPERATIONS CHIEF</b>		CHUNG, QUINCY		<b>BRANCH DIRECTOR</b>		
<b>DIVISION/GROUP SUPERVISOR</b>		CUNNINGHAM, CRAIG MASON, CHRIS (T)		<b>AIR ATTACK SUPERVISOR</b>		MUELLEN, STEVE DOGGETT, TYLER
<b>5. Resources Assigned this Period</b>						
Strike Team / Task Force / Resource Designator		LWD	Leader	Number Persons	Drop Off PT./Time	Pick Up PT./Time
HC1 SALMON RIVER 4 IHC C-4		08/20	ROBINSON, BILL	20	ICP/0600	ICP/2000
HC1 BLACK MESA IHC C-5		08/21	AUZA, FRANK	21	ICP/0600	ICP/2000
HC2IA COLOR COUNTRY 5 C-7		08/19	SEELHOFF, LUKE	21	ICP/0600	ICP/2000
HC2I PATRICK 13A HC2IA C-3		08/18	WALL, NIC	20	ICP/0600	ICP/2000
ENG6 TETON 621 E-9		08/19	CAMPBELL, BRET	3	ICP/0600	ICP/2000
ENG4 ID-IFD 3495 E-4		08/18	KARN, JAMES	5	ICP/0600	ICP/2000
ENG6 MADISON B62 E-5		08/18	LANDON, GARY	4	ICP/0600	ICP/2000
EMPF MCKINNEY, NATHANIEL O-19		08/19		1	ICP/0600	ICP/2000
AMBU MADISON AMBULANCE #5 E-44		08/19	JOHNSTON, ELLIS	2	ICP/0600	ICP/2000
SOF2 WISEMAN, MARK O-44		08/21		1	ICP/0600	ICP/2000
TFLD DAVIS, JAKE O-15		08/19		1	ICP/0600	ICP/2000
TFLD ANDO, AMY (T) O-37		08/19		1	ICP/0600	ICP/2000
<b>6. Control Operations/Work Assignments:</b>						
Minimize westerly spread towards Colson Creek. Continue to utilize aircraft for bucket work as needed.						
<b>7. Special Instructions:</b>						
<u>Ambulance Madison #5 staged at DP 20.</u>						
<b>8. Division/Group Communication Summary</b>						
Function	Channel	RX Frequency N/W	RX Tone/NAC	TX Frequency N/W	TX Tone/NAC	Mode
TACTICAL	1	168.2000	110.9	168.2000	110.9	A
COMMAND	7	170.9750	110.9	168.7000	110.9	A
COMMAND	8	170.0125	110.9	165.2500	110.9	A
AIR TO GROUND	12	169.2000		169.2000		A
<b>9. Prepared By (Resource Unit Leader)</b>			<b>Approved By (Planning Section Chief)</b>		<b>Date</b>	<b>Time</b>
WADE BURLESON			GARY PECK		08/08/2019	2100

**Division/Group Assignment List (ICS 204 WF)**  
**Controlled Unclassified Information//Basic**

<b>1. Incident Name:</b>		<b>3.</b>				
COVE CREEK		<b>Branch:</b>		<b>Division/Group:</b>		
<b>2. Operational Period: DAY</b>				<b>K</b>		
Date/Time From: 08/09/2019 0600 FRI	Date/Time To: 08/09/2019 2000 FRI					
<b>4. Operations Personnel</b>						
<b>OPERATIONS CHIEF</b>	CHUNG, QUINCY		<b>BRANCH DIRECTOR</b>			
<b>DIVISION/GROUP SUPERVISOR</b>	PETRAY, DOUGLAS CAVAULT, BEN (T)		<b>AIR ATTACK SUPERVISOR</b>		MUELLEN, STEVE DOGGETT, TYLER	
<b>5. Resources Assigned this Period</b>						
Strike Team / Task Force / Resource Designator	LWD	Leader	Number Persons	Drop Off PT./Time	Pick Up PT./Time	
UNSTAFFED						
<b>6. Control Operations/Work Assignments:</b>						
Scout perimeter. Look for routes to contain fire spread.						
<b>7. Special Instructions:</b>						
<u>Ambulance Madison #5 staged at DP 20.</u>						
<b>8. Division/Group Communication Summary</b>						
Function	Channel	RX Frequency N/W	RX Tone/NAC	TX Frequency N/W	TX Tone/NAC	Mode
TACTICAL	4	168.2500	110.9	168.2500	110.9	A
COMMAND	7	170.9750	110.9	168.7000	110.9	A
COMMAND	8	170.0125	110.9	165.2500	110.9	A
AIR TO GROUND	12	169.2000		169.2000		A
<b>9. Prepared By (Resource Unit Leader)</b>		<b>Approved By (Planning Section Chief)</b>		<b>Date</b>	<b>Time</b>	
WADE BURLESON		GARY PECK		08/08/2019	2100	

## Division/Group Assignment List (ICS 204 WF)

Controlled Unclassified Information//Basic

<b>1. Incident Name:</b>			<b>3.</b>			
COVE CREEK			<b>Branch:</b>		<b>Division/Group:</b>  <b>S</b>	
<b>2. Operational Period: DAY</b>						
Date/Time From: 08/09/2019 0600 FRI		Date/Time To: 08/09/2019 2000 FRI				
<b>4. Operations Personnel</b>						
<b>OPERATIONS CHIEF</b>		CHUNG, QUINCY		<b>BRANCH DIRECTOR</b>		
<b>DIVISION/GROUP SUPERVISOR</b>		CATLIN, AUSTIN DONATI, TALLYN (T)		<b>AIR ATTACK SUPERVISOR</b>		MUELLEN, STEVE DOGGETT, TYLER
<b>5. Resources Assigned this Period</b>						
Strike Team / Task Force / Resource Designator		LWD	Leader	Number Persons	Drop Off PT./Time	Pick Up PT./Time
HC1 SNAKE RIVER IHC C-13		08/17	DAVIS, PAUL	19	ICP/0600	ICP/2000
HC2I MEDICINE BOW/ROUTT NF #1 C-11		08/19	CUSACK, TIMOTHY	18	ICP/0600	ICP/2000
EMPF FARNSWORTH, CHRIS O-18		08/19		1	ICP/0600	ICP/2000
EMPF HAFEN, BRANDON O-20		08/19		1	ICP/0600	ICP/2000
TFLD KRAPFEL, ROBERT C-999.6		08/17		1	ICP/0600	ICP/2000
TFLD GREENSTEIN, CHRISTOPHER (T) O-38		08/21		1	ICP/0600	ICP/2000
SOFR MARTIN, MATTHEW O-47		08/22		1	ICP/0600	ICP/2000
<b>6. Control Operations/Work Assignments:</b>						
Continue to improve the 038 (Spring Creek) road from the Salmon River up to the switch backs. Continue the line construction to help straighten out the switch backs on the 038 road. From the switch backs to blue nose, continue to snag and improve the road as long as it is safe to proceed.						
<b>7. Special Instructions:</b>						
Utilize mile marker callout when heading up or down the 038 (Colson Creek) road. <b><u>Ambulance Madison #5 staged at DP 20.</u></b>						
<b>8. Division/Group Communication Summary</b>						
Function	Channel	RX Frequency N/W	RX Tone/NAC	TX Frequency N/W	TX Tone/NAC	Mode
TACTICAL	3	166.7750	110.9	166.7750	110.9	A
COMMAND	7	170.9750	110.9	168.7000	110.9	A
COMMAND	8	170.0125	110.9	165.2500	110.9	A
AIR TO GROUND	12	169.2000		169.2000		A
<b>9. Prepared By (Resource Unit Leader)</b>			<b>Approved By (Planning Section Chief)</b>		<b>Date</b>	<b>Time</b>
WADE BURLESON			GARY PECK		08/08/2019	2100



**Division/Group Assignment List (ICS 204 WF)**  
**Controlled Unclassified Information//Basic**

<b>1. Incident Name:</b>			<b>3.</b>			
COVE CREEK			<b>Branch:</b>		<b>Division/Group:</b>	
<b>2. Operational Period: DAY</b>					<b>Z</b>	
Date/Time From: 08/09/2019 0600 FRI		Date/Time To: 08/09/2019 2000 FRI				
<b>4. Operations Personnel</b>						
<b>OPERATIONS CHIEF</b>		CHUNG, QUINCY		<b>BRANCH DIRECTOR</b>		
<b>DIVISION/GROUP SUPERVISOR</b>		BISHOP, JIM LOVELESS, NICK (T)		<b>AIR ATTACK SUPERVISOR</b>		MUELLEN, STEVE DOGGETT, TYLER
<b>5. Resources Assigned this Period</b>						
Strike Team / Task Force / Resource Designator		LWD	Leader	Number Persons	Drop Off PT./Time	Pick Up PT./Time
HC1 SAWTOOTH IHC C-12		08/20	WEST, KYLE	19	ICP/0600	ICP/2000
HC2 TORRES 4B		08/18	CABRERA, LEONARDO	20	ICP/0600	ICP/2000
SMOKEJUMPER MODULE		08/16	SENSCQUA, KELLY	3	ICP/0600	ICP/2000
ENG4 ROCKY MTN #10 E-4		08/18	YELLOW KIDNEY, CORWIN	3	ICP/0600	ICP/2000
EMPF SCADDEN, MIKE O-21		08/18		1	ICP/0600	ICP/2000
HEALTH STUDY GROUP		08/18	BROWN, SKYLER	4	ICP/0600	ICP/2000
TFLD TOWERS, MIKE				1	ICP/0600	ICP/2000
TFLD BEYUKA, JAZZ (T) C-999.5				1	ICP/0600	ICP/2000
SOFR COLEMAN, GREGORY O-52		08/22		1	ICP/0600	ICP/2000
<b>6. Control Operations/Work Assignments:</b>						
Continue mop up to 150 feet in from DP 20 to DP 15. Reassess DP 17 for possible burnout if needed. Continue to utilize aircraft for bucket work as needed.						
<b>7. Special Instructions:</b>						
Study group contact Division Supervisor when working in Division.						
<b>Ambulance Madison #5 staged at DP 20.</b>						
<b>8. Division/Group Communication Summary</b>						
Function	Channel	RX Frequency N/W	RX Tone/NAC	TX Frequency N/W	TX Tone/NAC	Mode
TACTICAL	2	168.6000	110.9	168.6000	110.9	A
COMMAND	7	170.9750	110.9	168.7000	110.9	A
COMMAND	8	170.0125	110.9	165.2500	110.9	A
AIR TO GROUND	12	169.2000		169.2000		A
<b>9. Prepared By (Resource Unit Leader)</b>			<b>Approved By (Planning Section Chief)</b>		<b>Date</b>	<b>Time</b>
WADE BURLESON			GARY PECK		08/08/2019	2100

**Division/Group Assignment List (ICS 204 WF)**  
 Controlled Unclassified Information//Basic

<b>1. Incident Name:</b>			<b>3.</b>			
COVE CREEK			<b>Branch:</b>		<b>Division/Group:</b>	
<b>2. Operational Period: DAY</b>			<b>NIGHT SHIFT</b>			
Date/Time From: 08/09/2019 0600 FRI		Date/Time To: 08/09/2019 2000 FRI				
<b>4. Operations Personnel</b>						
<b>OPERATIONS CHIEF</b>		CHUNG, QUINCY		<b>BRANCH DIRECTOR</b>		
<b>DIVISION/GROUP SUPERVISOR</b>				<b>AIR ATTACK SUPERVISOR</b>		
<b>5. Resources Assigned this Period</b>						
Strike Team / Task Force / Resource Designator		LWD	Leader	Number Persons	Drop Off PT./Time	Pick Up PT./Time
ENG6 ID - GLR - 1611 E-6		08/18		3	ICP /1800	ICP/0600
<b>6. Control Operations/Work Assignments:</b>						
Patrol the Salmon River road between DP 20 and DP 15.						
<b>7. Special Instructions:</b>						
Night communications will be maintained with Operations Section Chief directly.						
<b>8. Division/Group Communication Summary</b>						
Function	Channel	RX Frequency N/W	RX Tone/NAC	TX Frequency N/W	TX Tone/NAC	Mode
TACTICAL	2	168.6000	110.9	168.6000	110.9	A
COMMAND	7	170.9750	110.9	168.7000	110.9	A
COMMAND	8	170.0125	110.9	165.2500	110.9	A
AIR TO GROUND	12	169.2000		169.2000		A
<b>9. Prepared By (Resource Unit Leader)</b>			<b>Approved By (Planning Section Chief)</b>		<b>Date</b>	<b>Time</b>
WADE BURLESON			GARY PECK		08/08/2019	2100

# AIR OPERATIONS SUMMARY

Prepared By: Gary Munson

Prepared Date: 8/8/2019

Prepared Time: 2000

<b>1. INCIDENT NAME:</b> Cove Creek	<b>2. OPS PERIOD DATE:</b> 08/09/2019	<b>Briefing:</b> 0800 <b>Fly:</b> 0830	<b>END TIME:</b> 2100	<b>SUNRISE:</b> 0630	<b>SUNSET:</b> 2052
--	--	---	--------------------------	-------------------------	------------------------

**3. Notes:** \* Incident medical transport aircraft to be assigned by Helibase manager.  
 \* Incident Helibase is located at the Salmon Airbase.  
 \* Air to ground tactical is for buckets only (requesting and directing)  
 \* Air to ground logistical is for all other missions including Emergency Shorthaul Ops.

**4. TFRs:**  
 Cove: 9/3214  
 Contact Frequency= 123.4  
 Altitude= 12,000 MSL

6. PERSONNEL	NAME	PHONE #	7. FREQUENCIES	TX	RX	8. FIXED-WING
AOBD	Gary Munson	208-859-4697	<u>A/A Fixed-Cove</u>	123.400	123.400	ATGS 1) N20S: Steve Muellen 970-596-6504 2) N668TM: Tyler Doggett 208-867-0493
ASGS	Tyler Brothers	208-993-1760	<u>A/A Rotor-Cove</u>	126.550	126.550	
HEBM	Mark Wisner	208-833-5925	<u>A/G Tactical-Cove</u>	169.200	169.200	
			<u>A/G Logistical-Cove</u>	168.2750	168.2750	
			<u>Deck-Salmon_AB</u>	163.100	163.100	
Salmon Air Base Ops		208-303-8122	<u>SCF IA Air/Air</u>	124.650	124.650	
			<u>SCF Primary A/G23</u>	166.7625	166.7625	
			<u>Air Guard</u>	168.625 (TX tone 110.9)	168.625	
<u>Helicopters</u>	<u>Type</u>	<u>Notes</u>	<u>ID Air MedEvac</u>	155.280 (TX tone 156.7)	155.280	18 Aviation personnel assigned.
N233AJ	Type 1-S-60	Off Today	<u>Med Transfer Helispot</u>	<u>Latitude</u>	<u>Longitude</u>	<u>USFS Shorthaul Helicopters</u>
N462WY	Type 1-CH-46E	Buckets Only	Cove Creek-H30 (By the Salmon river road, Helicopter to Helicopter transfer or Helicopter to Ambulance transfer.)	45.19.728	114.25.712	N38HX- Grangeville, ID (43 min flight time) N353SH- McCall, ID (39 min flight time)
N3181F	Type 2-UH1F	Buckets Only				
N205BT	Type 2-205++	Standard Category, Non Rappel				

### Safety Notes

- 1) Be clear of bucket drops and watch for falling branches dislodged by water drops.
- 2) Be proactive in hazard identification to the pilots.
- 3) Airline pilots must be fed the same food that is served in first class, but the co-pilots must eat a different dinner in case of food poisoning.
- 4) For pilots of medium class helicopters to descend below the canopy for any reason, they must have a 90 foot safety circle minimum from branch tip to branch tip.
- 5) Avoid requesting hovering spot drops from helicopters if possible.
- 6) By American Airlines switching a pilots paper manuals to an ipad, they save 1.2 million dollars in fuel annually.
- 7) Use panel markers, strobes, or mirror flashes to identify yourself and drop targets to increase efficiency and reduce pilot exposure.

## SAFETY MESSAGE

INCIDENT: <b>Cove Creek Fire</b>	DATE: 08-09-19	TIME: 0600-2200
<b>Major Hazards and Risks:</b>		
<p><b>Driving: <u>Stay Alert</u></b></p> <p>Slow down around blind corners and while driving on narrow roads. Find safe spots to pull off the shoulder or the road.</p> <p>Some roads have been getting dusty and rough. Turn your headlights on and watch your spacing and speed.</p>		
<p style="text-align: center;"><u><i>Hazard Tree Safety</i></u></p> <p><i>Follow "Hazard Tree Safety" IRPR Page 22</i></p> <p><i>Establish trigger Points for disengagement during high wind events.</i></p> <p><i>Remember that the hazard zone extends a minimum of two and a half tree heights.</i></p> <p><i>Fire weakened trees from Mustang Fire</i></p>	<p><b><u>Common Denominators of Fire Behavior on Tragedy Fires:</u></b></p> <p>Most fires are innocent in appearance before the "flare-ups" or "blow-ups". In some cases, tragedies occur in the mop-up stage. OR</p> <ul style="list-style-type: none"><li>-On relatively small fires or deceptively quiet areas of large fire.</li><li>-In relatively light fuels, such as grass, herbs, and light brush.</li><li>-When there is an unexpected shift in wind direction or in wind speed.</li></ul> <p>When fire responds to topographic conditions and runs uphill.</p> <p>Critical burn period between 1400 and 1700.</p> <p><i>Look at the page 5 of the Fireline Handbook.</i></p>	

**Stay healthy: Wash your hands before eating**

Incident Safety Team: Jeff Bedke, Tony Erickson (t), Mark Wiseman, Matthew Martin

## MEDICAL PLAN (ICS 206)

<b>1. Incident Name:</b> Cove Creek	<b>2. Operational Period:</b> Date From: 8/9/19 Time From: 0600	Date To: 8/9/19 Time To: 2200
--	--	----------------------------------

3. Medical Aid Stations:			
Name	Location	Contact Number(s)/Frequency	Paramedics on Site?
Cove Creek ICP	ICP	Command 7 & 8	<input type="checkbox"/> Yes <input checked="" type="checkbox"/> No
Cove Creek Ambulance	DP 20	Command 7 & 8	<input checked="" type="checkbox"/> Yes <input type="checkbox"/> No
			<input type="checkbox"/> Yes <input type="checkbox"/> No
Paramedics on divisions	Refer to ICS 204		<input checked="" type="checkbox"/> Yes <input type="checkbox"/> No
			<input type="checkbox"/> Yes <input type="checkbox"/> No
			<input type="checkbox"/> Yes <input type="checkbox"/> No

4. Transportation (indicate air or ground):			
Ambulance Service	Location	Contact Number(s)/Frequency	Level of Service
Cove Creek Ambulance	DP 20 (ground)	Command 7 & 8	<input checked="" type="checkbox"/> ALS <input type="checkbox"/> BLS
Air Idaho Rescue	Salmon (air)	800-247-4324	<input checked="" type="checkbox"/> ALS <input type="checkbox"/> BLS
Lemhi County Ambulance	Salmon, North Fork (ground)	911	<input checked="" type="checkbox"/> ALS <input type="checkbox"/> BLS
			<input type="checkbox"/> ALS <input type="checkbox"/> BLS

5. Hospitals:							
Hospital Name	Address, Latitude & Longitude if Helipad	Contact Number(s)/Frequency	Travel Time		Trauma Center	Burn Center	Helipad
			Air	Ground			
Steele Memorial	707 Van Dreff, Salmon	208-756-5655	20 min.	1 hr.	<input checked="" type="checkbox"/> Yes Level: 4	<input type="checkbox"/> Yes <input checked="" type="checkbox"/> No	<input checked="" type="checkbox"/> Yes <input type="checkbox"/> No
Eastern Idaho Medical Center	3100 Channing Way, Idaho Falls	208-227-2000	45 min.	2.5 hrs.	<input checked="" type="checkbox"/> Yes Level: 2	<input checked="" type="checkbox"/> Yes <input type="checkbox"/> No	<input checked="" type="checkbox"/> Yes <input type="checkbox"/> No
St. Patrick's	500 W. Broadway, Missoula	800-228-7271	45 min.	2.5 hrs.	<input checked="" type="checkbox"/> Yes Level: 2	<input type="checkbox"/> Yes <input type="checkbox"/> No	<input checked="" type="checkbox"/> Yes <input type="checkbox"/> No
University of Utah Medical Center	50 N. Medical Dr., SLC	801-581-2121	3 hrs.	5.5 hrs.	<input checked="" type="checkbox"/> Yes Level: 1	<input checked="" type="checkbox"/> Yes <input type="checkbox"/> No	<input checked="" type="checkbox"/> Yes <input type="checkbox"/> No
Steele Memorial Clinic (walk-in)	805 Main St. Salmon	208-756-6212	-	1 hr.	<input checked="" type="checkbox"/> Yes Level: 5	<input type="checkbox"/> Yes <input checked="" type="checkbox"/> No	<input type="checkbox"/> Yes <input checked="" type="checkbox"/> No

**6. Special Medical Emergency Procedures:**  
 Report all medical incidents to Cove Creek Communications on command. If the patient is a red/yellow, clear the command channel for emergency traffic. Using the Medical Incident Report (MIR), give required information to Cove Creek Communications including the preferred mode of transportation/extraction and current location. If non-incident medical resources are required, Cove Creek Communications will contact Central Idaho Dispatch to facilitate transportation of the patient.

Check box if aviation assets are utilized for rescue. If assets are used, coordinate with Air Operations.

<b>7. Prepared by (Medical Unit Leader):</b> Name: Dale Pickering	Signature: <i>Dale Pickering</i>
---	----------------------------------

<b>8. Approved by (Safety Officer):</b> Name: Tony Erickson (T)	Signature: <i>Tony Erickson</i> 5052
---	--------------------------------------

ICS 206	IAP Page _____	Date/Time: 8/7/2019
---------	----------------	---------------------

# MEDICAL PLAN (ICS 206 WF)

Controlled Unclassified Information//Basic

## Medical Incident Report

**FOR A NON-EMERGENCY INCIDENT, WORK THROUGH CHAIN OF COMMAND TO REPORT AND TRANSPORT INJURED PERSONNEL AS NECESSARY.**

**FOR A MEDICAL EMERGENCY: IDENTIFY ON SCENE INCIDENT COMMANDER BY NAME AND POSITION AND ANNOUNCE "MEDICAL EMERGENCY" TO INITIATE RESPONSE FROM IMT COMMUNICATIONS/DISPATCH.**

**Use the following items to communicate situation to communications/dispatch.**

**1. CONTACT COMMUNICATIONS / DISPATCH** (Verify correct frequency prior to starting report)

*Ex: "Communications, Div. Alpha. Stand-by for Emergency Traffic."*

**2. INCIDENT STATUS:** Provide incident summary (including number of patients) and command structure.

*Ex: "Communications, I have a Red priority patient, unconscious, struck by a falling tree. Requesting air ambulance to Forest Road 1 at (Lat./Long.) This will be the Trout Meadow Medical, IC is TFLD Jones. EMT Smith is providing medical care."*

Severity of Emergency / Transport Priority	<input type="checkbox"/> <b>RED / PRIORITY 1</b> Life or limb threatening injury or illness. Evacuation need is <b>IMMEDIATE</b> <i>Ex: Unconscious, difficulty breathing, bleeding severely, 2<sup>nd</sup> - 3<sup>rd</sup> burns more than 4 palm sizes, heat stroke, disoriented.</i> <input type="checkbox"/> <b>YELLOW / PRIORITY 2</b> Serious injury or illness. Evacuation may be <b>DELAYED</b> if necessary. <i>Ex: Significant trauma, unable to walk, 2<sup>nd</sup> - 3<sup>rd</sup> burns not more than 1-3 palm sizes.</i> <input type="checkbox"/> <b>GREEN / PRIORITY 3</b> Minor injury or illness. <b>Non-Emergency transport</b> <i>Ex: Sprains, strains, minor heat-related illness.</i>	
Nature of Injury or Illness & Mechanism of Injury		<i>Brief Summary of Injury or Illness (Ex: Unconscious, Struck by Falling Tree)</i>
Transport Request		<i>Air Ambulance / Short Haul/Hoist Ground Ambulance / Other</i>
Patient Location		<i>Descriptive Location &amp; Lat. / Long. (WGS84)</i>
Incident Name		<i>Geographic Name + "Medical" (Ex: Trout Meadow Medical)</i>
On-Scene Incident Commander		<i>Name of on-scene IC of Incident within an Incident (Ex: TFLD Jones)</i>
Patient Care		<i>Name of Care Provider (Ex: EMT Smith)</i>

**3. INITIAL PATIENT ASSESSMENT:** Complete this section for each patient as applicable (start with the most severe patient)

Patient Assessment: See IRPG page 106

Treatment:

**4. TRANSPORT PLAN:**

Evacuation Location (if different): (Descriptive Location (drop point, intersection, etc.) or Lat. / Long.) Patient's ETA to Evacuation Location:

Helispot / Extraction Site Size and Hazards:

**5. ADDITIONAL RESOURCES / EQUIPMENT NEEDS:**

*Example: Paramedic/EMT, Crews, Immobilization Devices, AED, Oxygen, Trauma Bag, IV/Fluid(s), Splints, Rope rescue, Wheeled litter, HAZMAT, Extrication*

**6. COMMUNICATIONS: Identify State Air/Ground EMS Frequencies and Hospital Contacts as applicable**

Function	Channel Name/Number	Receive (RX)	Tone/NAC *	Transmit (TX)	Tone/NAC *
COMMAND					
AIR-TO-GRND					
TACTICAL					

**7. CONTINGENCY:** Considerations: If primary options fail, what actions can be implemented in conjunction with primary evacuation method? Be thinking ahead.

**8. ADDITIONAL INFORMATION:** Updates/Changes, etc.

**REMEMBER:** Confirm ETA's of resources ordered. Act according to your level of training. Be Alert. Keep Calm. Think Clearly. Act Decisively.

## Incident within an Incident Plan

The Incident Commander is responsible for overall action in case of a serious accident.

### *ON SCENE*

Upon occurrence of a "Medical Emergency" involving significant injury (Yellow or Red Only) or fatality within the incident, the highest qualified person on scene shall take control of the situation until the nearest Division /Group Supervisor arrives to assume control. Immediate and clear communication must be established between Operations and Division/Group Supervisors to determine who can arrive at the scene quickest and assume control of the situation. In the event of such an incident in camp or on incident roads, on-site personnel shall take control until an Operations Chief or Division/Group Supervisor arrive or Local Law Enforcement and/or Medical personnel have assumed control as the On-Scene Incident Commander.

Incident Communications or the On-Scene Incident Commander will take immediate action to clear all radio traffic on the incident "Command Channel" by broadcasting "*Emergency Traffic Only*". This will assist in quick and proper coordination for managing the IWI.

*At no time during the incident will the name of the subject(s) be used over the radio.*

Upon arrival at the incident scene, whoever has been designated to manage the incident (Operations Chief or Division/Group Supervisor) should take immediate actions to:

- Identify and mobilize medical personnel to the scene – notify them you are in charge.
- Coordinate appropriate transportation for injured personnel.
- Restrict unnecessary personnel from the accident scene.
- Secure the scene area and identify witnesses for investigation.

The nearest Safety Officer will respond immediately to the scene and assist the On-Scene Incident Commander and shall be responsible for initiating the proper investigation and documentation.

---

### *ICP*

Specific processes for C&G notification, day and night, will be determined upon arrival at each incident.

Immediately upon notification of a serious incident requiring emergency action the communications unit will make radio and group text notification to the Incident Commander, Medical Unit Leader, Planning Operations, Safety Officer, and Air Operations. All will respond to the incident communications facility in order to support the IWI. The Medical Unit Leader or other appropriate C&G will normally physically operate the radio during the patient assessment/care portion of the incident, the RADO will be responsible for documentation. In the absence of the Incident Commander, The Plans Chief will assume the supervisory role. For non-serious (Green) incidents, the Safety Officer or Medical Unit Leader will notify the appropriate overhead as necessary.

Plans Chief, Logistics Chief, Finance Chief, Information Officer and Situation Unit Leader shall be notified and may be requested to respond to incident communications as dictated by specific emergency needs.

Information Officer is responsible for managing external communication. All information released from the incident shall be through the Information Officer with the approval of the Incident Commander.

The Incident Commander will make contact with the Agency Administrator who will in turn contact appropriate officials of the agency. If the accident involves a fatality, the Agency Administrator will be responsible for implementing agency specific protocols for dealing with the incident.

Approved by:



Incident Commander

Date

8/6/19

# INCIDENT RADIO COMMUNICATIONS PLAN (ICS 205)


Controlled Unclassified Information//Basic

<b>1. Incident Name:</b> COVE CREEK	<b>2. Date/Time Prepared:</b> Date: 08/08/2019 Time: 2100	<b>3. Operational Period:</b> DAY Date/Time From: 08/09/2019 0600 Date/Time To: 08/09/2019 2000
	FRI	FRI

**4. Basic Radio Channel Use:**

Zone Group	Ch #	Function	Channel Name/Trunked Radio System Talkgroup	Assignment	RX Freq	RX Tone/NAC	TX Freq	TX Tone/NAC	Mode (A,D, or M)	Remarks
	1	TACTICAL	TAC 1	DIV A	168.2000	110.9	168.2000	110.9	A	
	2	TACTICAL	TAC 2	DIV Z	168.6000	110.9	168.6000	110.9	A	
	3	TACTICAL	TAC 3	DIV S	166.7750	110.9	166.7750	110.9	A	
	4	TACTICAL	TAC 4	DIV K	168.2500	110.9	168.2500	110.9	A	
	5	TACTICAL	TAC 5		168.0500	110.9	168.0500	110.9	A	
	6	TACTICAL	TAC 6		166.7250	110.9	166.7250	110.9	A	
	7	COMMAND	CMD 7	COMMAND	170.9750	110.9	168.7000	110.9	A	LOCATED AT FS STORMY PEAK LOOKOUT
	8	COMMAND	CMD 8	COMMAND	170.0125	110.9	165.2500	110.9	A	LOCATED AT FS LONG TOM LOOKOUT
	9	COMMAND	CHAN 9		EMPTY		EMPTY		A	
	10	COMMAND	FS STORMY		172.2750		164.5000	167.9	A	CONTACT TO CENTRAL IDAHO DISPATCH
	11	COMMAND	FS LONGTOM		172.2750		164.5000	123.0	A	CONTACT TO CENTRAL IDAHO DISPATCH
	12	AIR TO GROUND	A/G TAC	AIR TO GROUND	169.2000		169.2000		A	TACTICAL HELO USE
	13	AIR TO GROUND	A/G LOG	AIR TO GROUND	168.2750		168.2750		A	LOGISTICAL HELO USE
	14	LOGISTICS	CAMP	LOGISTICS NET	168.3500	110.9	168.3500	110.9	A	COVE CREEK ICP USE
	15	COMMAND	ST COMM		155.2800		155.2800	156.7	A	
	16	AIR GUARD	AIRGUARD		168.6250		168.6250	110.9	A	EMERGENCY USE ONLY!!!

**5. Special Instructions:**

<b>6. Prepared By</b> (Communications Unit Leader)	Name: MICHAEL A. REED	Signature: 
ICS 205	IAP Page	Date/Time: 08/08/2019 2100



## Resource Advisor's Message – August 9, 2019

# Needles of Five...Leave it Alive!

### Whitebark Pine – A Living Legacy

If you have spent much time in the high country of the Central Idaho, you have probably noticed the windblown ancient appearance of the White Bark Pine (WBP). Perhaps you marveled at how these trees survive along bare, harsh, and windswept ridgelines.

But maybe you didn't know that the species is considered to be of vital importance to the high elevation ecosystems of the Northern Rocky Mountains and Pacific Northwest:

- They act as snow fences to hold moisture later in the spring gradually releasing water into the stream systems.
- They are an important food source for wildlife including black bear and the Clark's nutcracker.

This tree is in danger of functional extinction due to the introduced white pine blister rust along with bark beetle attacks. WBP depends on fire to create openings for regeneration. The Clark's nutcracker, a native bird species, prefers these openings to cache the heavy seeds of the WBP. Lost and abandoned caches become the future WBP forest. Thus fire exclusion has also played a role in the tree's demise.

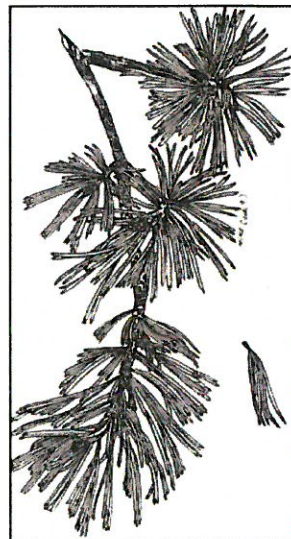
These trees can easily be damaged when we fight fire because they often grow in the same locations we cut fireline and helispots. It is very important that we do our best to protect the remaining WBP. These survivors may contain genetic resistance to the rust that could be critical to the long-term survival of this species.

### What Can I Do?

- Remember, safety and fire containment are always the top priority.
- Learn to identify this species and it's range - teach others.
- Avoid cutting WBP whenever possible.
  - fireline construction
  - helispot construction
- In our area, cutting many of another species is better than cutting a few WBP .
- Become a WBP advocate and learn more about this important tree!

### Identification

- Crown is broadly branched and open.
- Thin gray bark



- 5 needles per fascicle
- Needles clustered at branch end
- WBP can easily be confused with lodgepole pine, which has similar bark, but only 2 needles per fascicle.



Did you know? The Clark's nutcracker is in the same family as the crow, raven, and magpie. It can carry up to 30 whitebark pine seeds at one time and may travel 10 miles from a seed harvest site to a seed cache site.



**GREAT BASIN IMT LINE SUPPLY ORDER FORM**

<b>Date &amp; Time Order Received</b>	<b>Order # (DIVS + #)</b>	<b>Location &amp; Time for Delivery</b>	<b>Mode of Delivery</b>
		(Division#, Helispot#, Drop Point#, Lat. Long, Spike Camp)	(Drive, Helicopter Internal, Long Line, DIVS to Pick up)
Date:		Location:	Ground Support:
Time:		Date/Time needed:	Helibase:
			<b>Pick up by /@</b>
Order received in Communication		Time:	Name:
Order received in Supply		Time:	Name:
Order received in Ground Support		Time:	Name:
Order received by FDUL		Time:	Name:
Order received by Helibase		Time:	Name:

<b>Accountable Property #</b>	<b>All crew level orders will be placed through DIVS</b>
-------------------------------	--

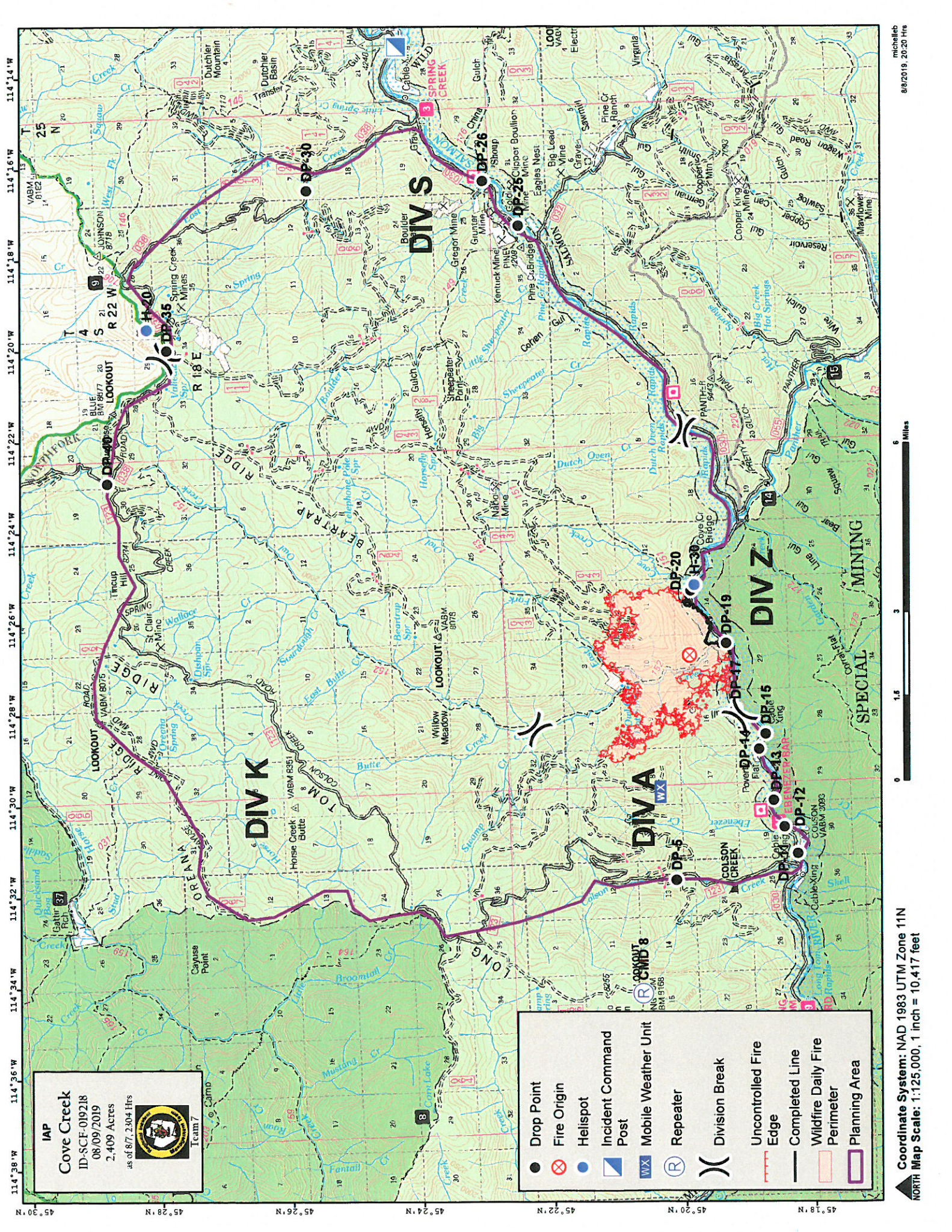
#	Qty	Item	Shipped	#	Qty	Item	Shipped
1		Meals: Breakfast		30		Folding Tank (1500 gal)	ea
2		Meals: Lunches		31		Pumpkin, 1500 Gal	ea
3		Meals: Dinners		32		Pumpkin (3000 / 6000 Gal)	ea
4		Meals: MRE's, # of cases 12/case)		33		Hose, 1.5" (100'roll)	roll
5		Water, cubic (5gal) ea		34		Hose, 1" (100'roll)	roll
6		Gatorade Case		35		Hose, ¾" ( Garden) (50'roll)	roll
7		Water Bottled Case		36		Reducer, 1.5" x 1"	ea
8		Toilet Paper roll		37		Reducer, 1" x ¾"	ea
9		Bath in a bag, (100/box) Box/ea		38		Gated Y, 1.5"	ea
10		Batteries: AA Box (24 ea/box)		39		Gated Y, 1"	ea
11		Batteries: Specify Type AAA / C / D ea		40		Gated Y, ¾"	ea
12		Flagging: Specify Type roll		41		Shut-off Valve, ¾"	ea
13		Fiber Tape roll		42		In-line T, 1.5" x 1"	ea
14		Parachute Cord ft/roll		43		Nozzle, 1.5"	ea
15		Garbage Bags Box/ea		44		Nozzle, 1"	ea
16		20 Man First Aid Kit ea		45		Nozzle,, ¾"	ea
17		Fusee Case		48		Double female, 1" and 1 ½"	ea
18		Shovel ea		49		Double male, 1" and ½"	ea
19		Pulaski ea		50		Inline tees, 1 ½" - 1"	ea
20		Combi ea		<b>General Kits (Order Gas Separately)</b>			
21		Backpack Pump, full ea		51		Chainsaw Kit	ea
22		Backpack Pump, empty ea		52		Sprinkler Kit	ea
23		Drip Torch, Full ea		53		High Pressure Pump Kit, includes pump and 1 quarts 2 cycle oil	ea
24		Drip Torch, Empty ea					
25		Visqueen feet/roll		54		Lightweight Pump Kit, includes 1 quart 2 cycle oil	ea
26		Foam 5 GAL/ea					
27				55		Volume Pump Kit, includes pump and 2 quarts Oil - SAE 10-30 WT	ea
28							
29		<b>½ MILE HOSE PACKAGE # of Packages ( )</b>		<b>FUEL</b>			
		Item	Quantity	56		Fuel, Unleaded	Gal
		1 ½" Hose	15	57		Fuel, Premium (chainsaws) 89 octane or better (Prefer Ethanol Free)	Gal
		1" Hose	30				
		¾" Hose	15	58		Fuel, Diesel	Gal
		1 ½" - 1" Reducer	15	59		Fuel, Drip Torch (3:1 mix)	Gal
		1" Nozzle (KK/Forester)	15			<b>Oil</b>	
		1 ½" Y	15	60		Bar Oil	QT/Gal
		1" - ¾" Reducer	15	61		2-cycle oil: Saw	ea
		¾" Y	15			<b>Air Support</b>	
		¾" Nozzle	15	62		Swivel, size: _____	ea
		1" and 1 ½" double female	3	63		Lead line	ea
		1" and ½" double male	3	64		Cargo Net, Size: _____	ea
		Nap Sack	3	65		Slingable Blivet, suppression	ea






**TIME**

**MAJOR EVENTS**



**IAP**  
**Cove Creek**  
 ID-SCF-019218  
 08/09/2019  
 2,409 Acres  
 as of 8/7, 2:04 Hrs



Team 7

- Drop Point
- ⊗ Fire Origin
- Helispot
- ▣ Incident Command Post
- WX Mobile Weather Unit
- Ⓡ Repeater
- ⎵ Division Break
- Uncontrolled Fire Edge
- Completed Line
- ▭ Wildfire Daily Fire Perimeter
- ▭ Planning Area

Coordinate System: NAD 1983 UTM Zone 11N  
 NORTH Map Scale: 1:125,000, 1 inch = 10,417 feet

