

COVE CREEK FIRE

INCIDENT ACTION PLAN



GREAT BASIN TEAM 7

ID-SCF-019218

AUGUST 10, 2019

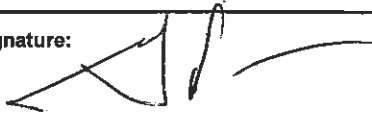
P4MJ90

DAY- O600-2000

INCIDENT OBJECTIVES (ICS 202)

1. Incident Name:		2. Operational Period: DAY	
COVE CREEK		Date/Time From: 08/10/2019 0600 SAT	Date/Time To: 08/10/2019 2000 SAT
3. Objective(s):			
Course Of Action:			
<ul style="list-style-type: none"> • Full suppression utilizing direct, indirect and point protection. 			
Incident Objectives:			
<ul style="list-style-type: none"> • Ensure all operations reflect a commitment to incident personnel and public safety commensurate with the values at risk and probability of success. • Implement reasonable efforts to keep the fire north of the Salmon River, west of Spring Creek, and east of Colson Creek. • Minimize impacts to private property, habitat of protected species, cultural and archeological sites. • Provide safe access along the Salmon River road for both firefighters and the public. • Ensure prompt and accurate communication that fosters discussion and encourages interaction with hosting agencies. • Focus public information actions to enhance relationships with landowners, cooperators and the public. 			
Desired End State:			
<ul style="list-style-type: none"> • The fire is suppressed and values at risk protected using the appropriate resources to implement tactics in locations with reasonable probabilities of success. At the conclusion of the incident, there will have been no serious accidents or injuries, all suppression damage will have been repaired, and the cooperator and public relationships will have been enhanced. 			
4. Operational Period Command Emphases:			
<ul style="list-style-type: none"> • Thoroughly evaluate variations in work environment and tasks 			
General Situational Awareness:			
<ul style="list-style-type: none"> • Be cognizant of weather impacts on fire and driving conditions. Stay aware and avoid complacency as pace changes in the work environment. 			
5. Site Safety Plan Required? Yes <input type="checkbox"/> No <input checked="" type="checkbox"/>			
Approved Site Safety Plan(s) Located at:			
6. Incident Action Plan (the items checked below are included in this Incident Action Plan):			
<input checked="" type="checkbox"/> ICS 202	<input type="checkbox"/> ICS 207	Other Attachments:	
<input checked="" type="checkbox"/> ICS 203	<input type="checkbox"/> ICS 208	<input checked="" type="checkbox"/> RESOURCE ADVISOR	
<input checked="" type="checkbox"/> ICS 204	<input checked="" type="checkbox"/> ICS 220	<input checked="" type="checkbox"/> SUPPLY ORDER	
<input checked="" type="checkbox"/> ICS 205	<input checked="" type="checkbox"/> Map/Chart	<input checked="" type="checkbox"/> REPLACEMENT GUIDELINES	
<input type="checkbox"/> ICS 205A	<input checked="" type="checkbox"/> Weather Forecast/Tides/Currents	<input type="checkbox"/> _____	
<input checked="" type="checkbox"/> ICS 206			
7. Prepared by: GARY PECK		Position/Title: PSC2	
Signature:			
8. Approved by Incident Commander:		Name: JEFF KNUDSON	
Signature:			
ICS 202		IAP Page	
		Date/Time: 08/09/2019 2100	

ORGANIZATION ASSIGNMENT LIST (ICS 203)

1. Incident Name:		2. Operational Period: DAY	
COVE CREEK		Date/Time From: 08/10/2019 0600	Date/Time To: 08/10/2019 2000 SAT
3. Incident Commander(s) and Command Staff:		ORDERING MANAGER	FLANDERS, KIM
IC/UC	KNUDSON, JEFF		
SAFETY OFFICER	BEDKE, JEFF ERICKSON TONY (T)	7. Operations Section:	
INFORMATION OFFICER	BROYLES, GEORGE DARBOVEN, ERIN	OPS SECTION CHIEF	JACKSON, GREGORY
LIAISON OFFICER	PETERSON, STEVE ACARREGUI, STEVEN	PLANNING OPS	BOSS, MATTHEW P (T)
4. Agency/Organization Representative(s):		DIVISION/GROUP	A CUNNINGHAM, CRAIG MASON, CHRIS (T)
Agency/Organization	Name	DIVISION/GROUP	K PETRAY, DOUG COVALT, BEN (T)
FOREST SERVICE	POVIRK, KYRA	DIVISION/GROUP	S CATLIN, AUSTIN DONATI, TALLYN (T)
IDL	BROWN, PAT	DIVISION/GROUP	Z BISHOP, JIM LOVELESS, NICK (T)
LEMHI COUNTY SHERIFF	PENNER, STEVE	7b. Air Operations Branch:	
FS READ	BACK, JEREMY EBY, NATHAN; MARIN, DEREK	AIR OPS BRANCH DIRECTOR	MUNSON, GARY
5. Planning Section:		AIR ATTACK SUPERVISOR	MUELLEN, STEVE DOGGETT, TYLER
CHIEF	PECK, GARY	AIR SUPPORT SUPERVISOR	BROTHERS, TYLER
SITUATION UNIT	MATTFELDT, MIKE	HELIBASE MANAGER	WISNER, MARK YOUNG, GALEN
RESOURCES UNIT	BURLESON, WADE PETTIGREW, CRAIG	8. Finance/Administration Section:	
DEMOBILIZATION UNIT	DODGE, SANDY	CHIEF	CRILL, KELIN
STATUS CHECK-IN	MEYERS, HANNE	TIME UNIT	MONTOYA-NEVES, THELESA WHARTON, CINDY (T)
FIRE BEHAVIOR ANALYST	BARTEL, DAN	EQTR	MINNOOK, TAMARA
GIS SPECIALIST	EHLER, B: BRAUN, C BARAGONA, M: (T) GILBERT, J (T)	PTRC	MARTIN, JUDY
TECHNOLOGY SUPPORT SPECIALIST	CAPPS, IVAN BALLARD, LANDIN	COMPENSATION UNIT	MCCABE, GLORIA
INCIDENT METEOROLOGIST	WILLIAMS, DEREK	COST UNIT	PIPER, LEE
LTAN	COLLINS, CHIP KAFKA, JOE (T)	ICPI	PIAZZA, MIKE
6. Logistics Section:			
CHIEF	SWENSON, TRACY		
DEPUTY	LANGFORD, JUSTIN		
SUPPLY UNIT	WHARTON, TJ		
FACILITIES UNIT	HUGHES, LEE		
FOOD UNIT	NORMAN, VAL SHUMWAY, NOLAN V (T)		
GROUND SUPPORT UNIT	HADLEY, DOUG		
COMMUNICATIONS UNIT	REED, MIKE		
MEDICAL UNIT	PICKERING, DALE		
SECURITY UNIT	DIPPEL, CRIS		
9. Prepared By: Name: GARY PECK		Position/Title: PSC2	
ICS 203	IAP Page	Date/Time: 08/09/2019 0548	



Fire Weather Forecast

FORECAST NO: 4
PREDICTION FOR: Day Shift
DATE: August 10th, 2019
FORECAST ISSUED: 1900 August 9th, 2019

NAME OF FIRE: Cove Creek
UNIT: Salmon-Challis NF
Incident Meteorologist: Derek Williams
Signed: *Derek Williams*

WEATHER DISCUSSION: ****Red Flag Warning today for scattered (some strong) thunderstorms**** The primary concern today will be another round of afternoon showers and thunderstorms. Some of the thunderstorms that develop across the Salmon-Challis NF could be strong to severe accompanied by strong winds, brief heavy rain, lightning and potentially hail. Breezy south to southeast winds will develop in the afternoon with gusts around 30 mph on higher slopes and ridgetops. Excellent overnight relative humidity recoveries will continue along with cooler temperatures.

TODAY: ****Strong to severe thunderstorms possible this afternoon****

WEATHER: Partly cloudy becoming mostly cloudy in the afternoon. Scattered showers and thunderstorms, some strong, developing after 1300.

TEMPERATURES: (3500 ft.): 76-80 (1-2° cooler)
(6000 ft.): 67-71 (1-2° cooler)

HUMIDITY: (3500 ft.): 35-40% (5% higher)
(6000 ft.): 40-45% (5% higher)

20 FT WINDS:

Valleys: Downslope/downvalley 2-4 mph before 1100 transitioning to upslope/upvalley in the afternoon to 3-6 mph.

Ridges: South to southeast wind 5-10 mph in the morning increasing to 10-20 mph with gusts to 30 mph in the afternoon.

CWR (>0.10 of an inch): 50%.

LIGHTNING ACTIVITY LEVEL: 4.

HAINES INDEX: 4 (low).

INVERSION: Breaking around 1100.

TONIGHT:

WEATHER: Mostly cloudy with showers and thunderstorms before midnight, diminishing early Sunday morning.

TEMPERATURES: (3500 ft.): 55-59 (1-2° cooler)
(6000 ft.): 55-58 (1-2° cooler)

HUMIDITY: (3500 ft.): 85-95% (little change)
(6000 ft.): 80-90% (5% higher)

20 FT WINDS:

Valleys: Becoming light and variable.

Ridges: Southwest 5-10 mph with gusts to 15 mph.

CWR (>0.10 of an inch): 30%.

LIGHTNING ACTIVITY LEVEL: 3.

SUNDAY: ****Gusty outflow winds expected with showers/thunderstorms****

WEATHER: Cooler. Partly cloudy becoming mostly cloudy with isolated showers and thunderstorms in the afternoon.

TEMPERATURES: (3500 ft.): 68-72 (6-8° cooler)
(6000 ft.): 59-63 (6-8° cooler)

HUMIDITY: (3500 ft.): 33-38% (2% lower)
(6000 ft.): 38-43% (2% lower)

20 FT WINDS:

Valleys: Winds in the Salmon River drainage and similarly aligned canyons will be from the west-southwest at 8-12 mph with gusts to 20 mph in the afternoon. Otherwise, expect light diurnal winds less than 8 mph.

Ridges: Southwest 10 mph becoming west and increasing to 10-15 mph with gusts to 25 mph in the afternoon.

CWR (>0.10 of an inch): 20%.

LIGHTNING ACTIVITY LEVEL: 3.

HAINES INDEX: 3 (low).

EXTENDED OUTLOOK: Sunday through Thursday: Dry conditions with warming temperatures are expected Monday and Tuesday with relatively light west to southwest winds. Relative humidity will drop with warming temperatures with a slight chance for afternoon showers and thunderstorms returning Wednesday and Thursday.

FIRE BEHAVIOR FORECAST

FORECAST NUMBER: 04	TYPE OF FIRE: Wildfire
FIRE NAME: Cove Creek	OPERATIONAL PERIOD: Day
DATE ISSUED: 08/09/2019	TIME ISSUED: 2000
UNIT: ID-SCF-019218	SIGNED: <i>Dan Bartel</i>
	Typed/printed: Dan Bartel

INPUTS

WEATHER SUMMARY:

Isolated thunderstorms are possible, outflow winds from thunderstorms will have the potential to cause rapid rates of spread.

OUTPUTS

FIRE BEHAVIOR

GENERAL:

Diurnal winds will dictate fire spread during the morning hours. Winds will increase out of the south-southeast by noon. Afternoon winds will dominate fire spread and advance the fire to the north-northeast. Higher daytime humidity will slow fire spread in the fine fuels. Fuel Moisture in larger (1000hr) fuels will allow the fire to continue to spread, despite higher humidity. Afternoon thunderstorms could produce gusts around 30mph, potentially leading to short-range spotting along ridgetops in patches of mixed conifer.

Haines Index: 4 Low

PIG: 55%

SPECIFIC:

DIV A: Flanking/backing fire with southern dominated winds. The fire will continue to burn into the Main Salmon River corridor and Skull Gulch with 1 to 2-foot flame lengths.

DIV K: Winds will align with Owl and East Owl Creek moving the fire up canyon-upslope, producing 6 to 8-foot flames. Afternoon thunderstorms could produce wind gusts of 30mph resulting in rapid rates of spread.

DIV S: Winds will align with Cove Creek and the Main Salmon River corridor moving the fire up canyon/upslope. Afternoon thunderstorms could produce wind gusts of 30mph resulting in rapid rates of spread.

DIV Z: Flanking /backing fire with the southern dominated winds. This area of the fire will continue to burn into the Main Salmon River corridor with 1 to 2-foot flame lengths.

AIR OPERATIONS:

The inversion over the fire expected to lift by 1100.

Afternoon thunderstorms could affect air operations with possible wind gusts in excess of 40 MPH

SAFETY

Steep slopes and rolling debris pose a high risk in the Salmon River Breaks. Slopes within the fire, range from 30 to 70 percent in slope.

Division/Group Assignment List (ICS 204 WF)
Controlled Unclassified Information//Basic

1. Incident Name:			3.			
COVE CREEK			Branch:		Division/Group:	
2. Operational Period: DAY					A	
Date/Time From: 08/10/2019 0600 SAT		Date/Time To: 08/10/2019 2000 SAT				
4. Operations Personnel						
OPERATIONS CHIEF		JACKSON, GREGORY		BRANCH DIRECTOR		
DIVISION/GROUP SUPERVISOR		CUNNINGHAM, CRAIG MASON, CHRIS (T)		AIR ATTACK SUPERVISOR		MUELLEN, STEVE DOGGETT, TYLER
5. Resources Assigned this Period						
Strike Team / Task Force / Resource Designator		LWD	Leader	Number Persons	Drop Off PT./Time	Pick Up PT./Time
HC1 SALMON RIVER 4 IHC C-4		08/20	ROBINSON, BILL	20	ICP/0600	ICP/2000
HC2IA COLOR COUNTRY 5 C-7		08/19	SEELHOFF, LUKE	21	ICP/0600	ICP/2000
ENG6 TETON 621 E-9		08/19	CAMPBELL, BRET	3	ICP/0600	ICP/2000
ENG4 ID-IFD 3495 E-4		08/18	KARN, JAMES	5	ICP/0600	ICP/2000
ENG6 MADISON B62 E-5		08/18	LANDON, GARY	4	ICP/0600	ICP/2000
FMOD BROTHERS FIRE MOD 01 O-50		08/22	WORLEY, MIKE	2	ICP/0600	ICP/2000
FMOD BROTHERS FIRE MOD 03 O-51		08/22	SHIVELY, MICHAEL	2	ICP/0600	ICP/2000
CHIP ARCHER MOUNTAIN E-67		08/22	BARTON, JUSTUS	3	ICP/0600	ICP/2000
EMPF MCKINNEY, NATHANIEL O-19		08/19		1	ICP/0600	ICP/2000
EMPF HAFEN, BRANDON O-20		08/19		1	ICP/0600	ICP/2000
AMBU MADISON AMBULANCE #5 E-44		08/19	JOHNSTON, ELLIS	2	ICP/0600	ICP/2000
SOF2 WISEMAN, MARK O-44		08/21		1	ICP/0600	ICP/2000
TFLD DAVIS, JAKE O-15		08/19		1	ICP/0600	ICP/2000
TFLD ANDO, AMY (T) O-37		08/19		1	ICP/0600	ICP/2000
6. Control Operations/Work Assignments:						
Minimize westerly spread towards Colson Creek. Continue to utilize aircraft for bucket work as needed. Burn out around Poverty Flats if needed. Chip material along Salmon River and Colson Creek road.						
7. Special Instructions:						
Follow "Hazard Tree Safety" IRPR Page 22 Establish trigger Points for disengagement during high wind events. Remember that the hazard zone extends a minimum of two and a half tree heights.						
8. Division/Group Communication Summary						
Function	Channel	RX Frequency N/W	RX Tone/NAC	TX Frequency N/W	TX Tone/NAC	Mode
TACTICAL	1	168.2000	110.9	168.2000	110.9	A
COMMAND	7	170.9750	110.9	168.7000	110.9	A
COMMAND	8	170.0125	110.9	165.2500	110.9	A
AIR TO GROUND	12	169.2000		169.2000		A
9. Prepared By (Resource Unit Leader)			Approved By (Planning Section Chief)		Date	Time
WADE BURLESON			GARY PECK		08/09/2019	2100

Division/Group Assignment List (ICS 204 WF)
Controlled Unclassified Information//Basic

1. Incident Name:				3.			
COVE CREEK				Branch:		Division/Group:	
2. Operational Period: DAY						A	
Date/Time From: 08/10/2019 0600 SAT		Date/Time To: 08/10/2019 2000 SAT					
4. Operations Personnel							
OPERATIONS CHIEF		JACKSON, GREGORY		BRANCH DIRECTOR			
DIVISION/GROUP SUPERVISOR		CUNNINGHAM, CRAIG MASON, CHRIS (T)		AIR ATTACK SUPERVISOR		MUELLEN, STEVE DOGGETT, TYLER	
7. Special Instructions:							
<u>Ambulance Madison #5 staged at DP 20.</u>							
8. Division/Group Communication Summary							
Function	Channel	RX Frequency N/W	RX Tone/NAC	TX Frequency N/W	TX Tone/NAC	Mode	
TACTICAL	1	168.2000	110.9	168.2000	110.9	A	
COMMAND	7	170.9750	110.9	168.7000	110.9	A	
COMMAND	8	170.0125	110.9	165.2500	110.9	A	
AIR TO GROUND	12	169.2000		169.2000		A	
9. Prepared By (Resource Unit Leader)				Approved By (Planning Section Chief)		Date	Time
WADE BURLESON				GARY PECK		08/09/2019	2100

Division/Group Assignment List (ICS 204 WF)
Controlled Unclassified Information//Basic

1. Incident Name:			3.			
COVE CREEK			Branch:		Division/Group:	
2. Operational Period: DAY					K	
Date/Time From: 08/10/2019 0600 SAT	Date/Time To: 08/10/2019 2000 SAT					
4. Operations Personnel						
OPERATIONS CHIEF		JACKSON, GREGORY		BRANCH DIRECTOR		
DIVISION/GROUP SUPERVISOR		PETRAY, DOUGLAS CAVAULT, BEN (T)		AIR ATTACK SUPERVISOR		MUELLEN, STEVE DOGGETT, TYLER
5. Resources Assigned this Period						
Strike Team / Task Force / Resource Designator		LWD	Leader	Number Persons	Drop Off PT./Time	Pick Up PT./Time
UNSTAFFED						
6. Control Operations/Work Assignments:						
<p>Scout perimeter. Look for routes to contain fire spread. Assess structures West of Colson Creek (123) road. Continue scouting for possible contingency lines West of Colson Creek road.</p>						
7. Special Instructions:						
<p>Follow "Hazard Tree Safety" IRPR Page 22 Establish trigger points for disengagement during high wind events. Remember that the hazard zone extends a minimum of two and a half tree heights.</p> <p>Ambulance Madison #5 staged at DP 20.</p>						
8. Division/Group Communication Summary						
Function	Channel	RX Frequency N/W	RX Tone/NAC	TX Frequency N/W	TX Tone/NAC	Mode
TACTICAL	4	168.2500	110.9	168.2500	110.9	A
COMMAND	7	170.9750	110.9	168.7000	110.9	A
COMMAND	8	170.0125	110.9	165.2500	110.9	A
AIR TO GROUND	12	169.2000		169.2000		A
9. Prepared By (Resource Unit Leader)			Approved By (Planning Section Chief)		Date	Time
WADE BURLESON			GARY PECK		08/09/2019	2100

Division/Group Assignment List (ICS 204 WF)
Controlled Unclassified Information//Basic

1. Incident Name:			3.			
COVE CREEK			Branch:		Division/Group:	
2. Operational Period: DAY					S	
Date/Time From: 08/10/2019 0600 SAT			Date/Time To: 08/10/2019 2000 SAT			
4. Operations Personnel						
OPERATIONS CHIEF		JACKSON, GREGORY		BRANCH DIRECTOR		
DIVISION/GROUP SUPERVISOR		CATLIN, AUSTIN DONATI, TALLYN (T)		AIR ATTACK SUPERVISOR		MUELLEN, STEVE DOGGETT, TYLER
5. Resources Assigned this Period						
Strike Team / Task Force / Resource Designator		LWD	Leader	Number Persons	Drop Off PT./Time	Pick Up PT./Time
HC2! MEDICINE BOW/ROUTT NF #1 C-11		08/19	CUSACK, TIMOTHY	18	ICP/0600	ICP/2000
EMPF FARNSWORTH, CHRIS O-18		08/19		1	ICP/0600	ICP/2000
SOFR MARTIN, MATTHEW O-47		08/22		1	ICP/0600	ICP/2000
TFLD KRAPFEL, ROBERT C-999.6		08/17		1	ICP/0600	ICP/2000
TFLD GREENSTEIN, CHRISTOPHER (T) O-38		08/21		1	ICP/0600	ICP/2000
6. Control Operations/Work Assignments:						
Continue to improve the 038 (Spring Creek) road from the Salmon River Corridor up to the switch backs. Continue the line construction to help straighten out the switch backs on the 038 road.						
7. Special Instructions:						
Utilize mile marker callout when heading up or down the Spring Creek road. Ambulance Madison #5 staged at DP 20.						
8. Division/Group Communication Summary						
Function	Channel	RX Frequency N/W	RX Tone/NAC	TX Frequency N/W	TX Tone/NAC	Mode
TACTICAL	3	166.7750	110.9	166.7750	110.9	A
COMMAND	7	170.9750	110.9	168.7000	110.9	A
COMMAND	8	170.0125	110.9	165.2500	110.9	A
AIR TO GROUND	12	169.2000		169.2000		A
9. Prepared By (Resource Unit Leader)			Approved By (Planning Section Chief)		Date	Time
WADE BURLESON			GARY PECK		08/09/2019	2100

Division/Group Assignment List (ICS 204 WF)
Controlled Unclassified Information//Basic

1. Incident Name:			3.			
COVE CREEK			Branch:		Division/Group:	
2. Operational Period: DAY					Z	
Date/Time From: 08/10/2019 0600 SAT		Date/Time To: 08/10/2019 2000 SAT				
4. Operations Personnel						
OPERATIONS CHIEF		JACKSON, GREGORY		BRANCH DIRECTOR		
DIVISION/GROUP SUPERVISOR		BISHOP, JIM LOVELESS, NICK (T)		AIR ATTACK SUPERVISOR		MUELLEN, STEVE DOGGETT, TYLER
5. Resources Assigned this Period						
Strike Team / Task Force / Resource Designator		LWD	Leader	Number Persons	Drop Off PT./Time	Pick Up PT./Time
HC1 SAWTOOTH IHC C-12		08/20	WEST, KYLE	19	ICP/0600	ICP/2000
HC2IA TORRES 4B		08/19	CABRERA, LEONARDO	20	ICP/0600	ICP/2000
SMOKEJUMPER MODULE		08/16	SENSCQUA, KELLY O-58	2	ICP/0600	ICP/2000
ENG4 ROCKY MTN #10 E-60		08/18	YELLOW KIDNEY, CORWIN	3	ICP/0600	ICP/2000
EMPF SCADDEN, MIKE O-21		08/18		1	ICP/0600	ICP/2000
SOFR COLEMAN, GREGORY O-52		08/22		1	ICP/0600	ICP/2000
TFLD TOWERS, MIKE O-16		08/18		1	ICP/0600	ICP/2000
TFLD BEYUKA, JAZZ (T) O-60		08/16		1	ICP/0600	ICP/2000
6. Control Operations/Work Assignments:						
Continue mop up to 150 feet in from DP 17 to DP 20. Continue to utilize aircraft for bucket work as needed.						
7. Special Instructions:						
<u>Ambulance Madison #5 staged at DP 20.</u>						
8. Division/Group Communication Summary						
Function	Channel	RX Frequency N/W	RX Tone/NAC	TX Frequency N/W	TX Tone/NAC	Mode
TACTICAL	2	168.6000	110.9	168.6000	110.9	A
COMMAND	7	170.9750	110.9	168.7000	110.9	A
COMMAND	8	170.0125	110.9	165.2500	110.9	A
AIR TO GROUND	12	169.2000		169.2000		A
9. Prepared By (Resource Unit Leader)			Approved By (Planning Section Chief)		Date	Time
WADE BURLESON			GARY PECK		08/09/2019	2100

Division/Group Assignment List (ICS 204 WF)
Controlled Unclassified Information//Basic

1. Incident Name:			3.			
COVE CREEK			Branch:		Division/Group:	
2. Operational Period: DAY					NIGHT SHIFT	
Date/Time From: 08/10/2019 0600 SAT			Date/Time To: 08/10/2019 2000 SAT			
4. Operations Personnel						
OPERATIONS CHIEF		JACKSON, GREGORY		BRANCH DIRECTOR		
DIVISION/GROUP SUPERVISOR				AIR ATTACK SUPERVISOR		
5. Resources Assigned this Period						
Strike Team / Task Force / Resource Designator		LWD	Leader	Number Persons	Drop Off PT./Time	Pick Up PT./Time
ENG6 ID - GLR - 1611 E-6		08/18	MYLER, CARY	3	ICP /1800	ICP/0600
6. Control Operations/Work Assignments:						
Patrol the Salmon River Corridor between DP 20 and DP 15.						
7. Special Instructions:						
Night communications will be maintained with Operations Section Chief directly.						
8. Division/Group Communication Summary						
Function	Channel	RX Frequency N/W	RX Tone/NAC	TX Frequency N/W	TX Tone/NAC	Mode
TACTICAL	2	168.6000	110.9	168.6000	110.9	A
COMMAND	7	170.9750	110.9	168.7000	110.9	A
COMMAND	8	170.0125	110.9	165.2500	110.9	A
AIR TO GROUND	12	169.2000		169.2000		A
9. Prepared By (Resource Unit Leader)			Approved By (Planning Section Chief)		Date	Time
WADE BURLESON			GARY PECK		08/09/2019	2100

AIR OPERATIONS SUMMARY

Prepared By: Gary Munson

Prepared Date: 8/9/2019

Prepared Time: 2000

1. INCIDENT NAME: Cove Creek	2. OPS PERIOD DATE: 08/10/2019	Briefing: 0800 Fly: 0830	END TIME: 2100	SUNRISE: 0631	SUNSET: 2050
--	--	---	--------------------------	-------------------------	------------------------

3. Notes: * Incident medical transport aircraft to be assigned by Helibase manager.
 * Incident Helibase is located at the Salmon Airbase.
 * Air to ground tactical is for buckets only (requesting and directing)
 * Air to ground logistical is for all other missions including Emergency Shorthaul Ops.

4. TFRs:
 Cove: 9/3214
 Contact Frequency= 123.4
 Altitude= 12,000 MSL

6. PERSONNEL	NAME	PHONE #	7. FREQUENCIES	TX	RX	8. FIXED-WING
AOBD	Gary Munson	208-859-4697	<u>A/A Fixed-Cove</u>	123.400	123.400	ATGS 1) N20S: Steve Muellen 970-596-6504 2) N668TM: Tyler Doggett 208-867-0493
ASGS	Tyler Brothers	208-993-1760	<u>A/A Rotor-Cove</u>	126.550	126.550	
			<u>A/G Tactical-Cove</u>	169.200	169.200	
HEBM	Mark Wisner	208-833-5925	<u>A/G Logistical-Cove</u>	167.125	167.125	
			<u>Deck-Salmon AB</u>	163.100	163.100	
Salmon Air Base Ops		208-303-8122	<u>SCF IA Air/Air</u>	124.650	124.650	
			<u>SCF Primary A/G23</u>	166.7625	166.7625	
			<u>Air Guard</u>	168.625 (TX tone 110.9)	168.625	
<u>Helicopters</u>	Type	Notes	<u>ID Air MedEvac</u>	155.280 (TX tone 156.7)	155.280	18 Aviation personnel assigned.
N23AJ	Type 1-S-60	Buckets Only	<u>Med Transfer Helispot</u>	Latitude	Longitude	<u>USFS Shorthaul Helicopters</u>
N462WY	Type 1-CH-46E	Buckets Only	Cove Creek-H30	45.19.728	114.25.712	N38HX- Grangeville, ID (43 min flight time) N353SH- McCall, ID (39 min flight time)
N3181F	Type 2-UH1F	Buckets Only	(By the Salmon river road, Helicopter to Helicopter transfer or Helicopter to Ambulance transfer.)			
N205BT	Type 2-205++	Standard Category, Non Rappel				

Safety Notes

- 1) Be clear of bucket drops and watch for falling branches dislodged by water drops.
- 2) Be proactive in hazard identification to the pilots.
- 3) KLM Royal Dutch Airlines is the world's oldest airline established in 1919, Qantas is the second oldest established in 1920.
- 4) For pilots of medium class helicopters to descend below the canopy for any reason, they must have a 90 foot safety circle minimum from branch tip to branch tip.
- 5) Avoid requesting hovering spot drops from helicopters if possible.
- 6) In 1987, American Airlines saved 40,000\$ per year by removing 1 olive from every salad served in first class.
- 7) Use panel markers, strobes, or mirror flashes to identify yourself and drop targets to increase efficiency and reduce pilot exposure.

HEALTH AND SAFETY MESSAGE

SAFETY starts with *YOU*

We are ALL accountable for SAFE behaviors

INCIDENT: Cove Creek

DATE: August 10, 2019

Major Hazards and Risks:

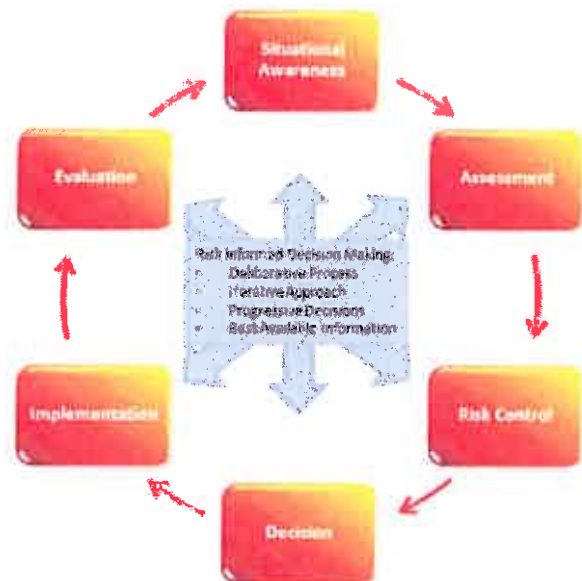
- **DRIVING:** Drive defensively, be aware of recreation traffic on roadways and fire area. Obey all posted speed limits. Share the roadway. Be aware of other drivers, personnel and wildlife. Be alert and watch for public and other non-operational personnel in fire areas.
- **Heat Related Illness (HRI):** Take care to monitor the health and welfare of yourself and crew, drink plenty of water/fluids, take frequent breaks, get 8 hours of sleep, and get enough food to support your task of the day.
- **HAZARD TREES:** Look up, Look down, Look around for signs of fire weakened trees.

Wildlife Encounters

Do not leave trash or food on the line. This attracts wildlife! If you see a bear leave it be!



Risk Management



- Establish situation awareness.
- Identify hazards and assessing the risk.
 - Control or eliminate hazards.
- Make decisions based on acceptability of remaining risk.
- Evaluate effectiveness of hazard controls and continuously reevaluate the situation.

Incident Safety Team: Jeff Bedke, Tony Erickson (t)

INCIDENT RADIO COMMUNICATIONS PLAN (ICS 205)

Controlled Unclassified Information//Basic

1. Incident Name: COVE CREEK

2. Date/Time Prepared: Date: 08/09/2019 Time: 2100


3. Operational Period: DAY

Date/Time From: 08/10/2019 0600 Date/Time To: 08/10/2019 2000 SAT SAT

Zone Group	Ch #	Function	Channel Name/Trunked Radio System Talkgroup	Assignment	RX Freq	RX Tone/NAC	TX Freq	TX Tone/NAC	Mode (A,D, or M)	Remarks
	1	TACTICAL	TAC 1	DIV A	168.2000	110.9	168.2000	110.9	A	
	2	TACTICAL	TAC 2	DIV Z	168.6000	110.9	168.6000	110.9	A	
	3	TACTICAL	TAC 3	DIV S	166.7750	110.9	166.7750	110.9	A	
	4	TACTICAL	TAC 4	DIV K	168.2500	110.9	168.2500	110.9	A	
	5	TACTICAL	TAC 5		168.0500	110.9	168.0500	110.9	A	
	6	TACTICAL	TAC 6		166.7250	110.9	166.7250	110.9	A	
	7	COMMAND	CMD 7	COMMAND	170.9750	110.9	168.7000	110.9	A	LOCATED AT FS STORMY PEAK LOOKOUT
	8	COMMAND	CMD 8	COMMAND	170.0125	110.9	165.2500	110.9	A	LOCATED AT FS LONG TOM LOOKOUT
	9	COMMAND	CMD 9	COMMAND	172.6500	110.9	164.6750	110.9	A	LOCATED AT HOTSPRINGS LOOKOUT
	10	COMMAND	FS STORMY		172.2750		164.5000	167.9	A	CONTACT TO CENTRAL IDAHO DISPATCH
	11	COMMAND	FS LONGTOM		172.2750		164.5000	123.0	A	CONTACT TO CENTRAL IDAHO DISPATCH
	12	AIR TO GROUND	AVG TAC	AIR TO GROUND	169.2000		169.2000		A	TACTICAL HELO USE
	13	AIR TO GROUND	AVG LOG	AIR TO GROUND	167.1250		167.1250		A	LOGISTICAL HELO USE
	14	LOGISTICS	CAMP	LOGISTICS NET	168.3500	110.9	168.3500	110.9	A	COVE CREEK ICP USE
	15	COMMAND	ST COMM		155.2800		155.2800	156.7	A	
	16	AIR GUARD	AIRGUARD		168.6250		168.6250	110.9	A	EMERGENCY USE ONLY!!!

5. Special Instructions:

6. Prepared By (Communications Unit Leader) Name: MICHAEL A. REED

Signature: 

ICS 205 IAP Page Date/Time: 08/09/2019 2100

MEDICAL PLAN (ICS 206)

1. Incident Name: Cove Creek	2. Operational Period: Date From: 8/10/19 Time From: 0600	Date To: 8/10/19 Time To: 2200
--	---	-----------------------------------

3. Medical Aid Stations:			
Name	Location	Contact Number(s)/Frequency	Paramedics on Site?
Cove Creek ICP	ICP	Command 7 & 8	<input type="checkbox"/> Yes <input checked="" type="checkbox"/> No
Cove Creek Ambulance	DP 20	Command 7 & 8	<input checked="" type="checkbox"/> Yes <input type="checkbox"/> No
			<input type="checkbox"/> Yes <input type="checkbox"/> No
Paramedics on divisions	Refer to ICS 204		<input checked="" type="checkbox"/> Yes <input type="checkbox"/> No
			<input type="checkbox"/> Yes <input type="checkbox"/> No
			<input type="checkbox"/> Yes <input type="checkbox"/> No

4. Transportation (indicate air or ground):			
Ambulance Service	Location	Contact Number(s)/Frequency	Level of Service
Cove Creek Ambulance	DP 20 (ground)	Command 7 & 8	<input checked="" type="checkbox"/> ALS <input type="checkbox"/> BLS
Air Idaho Rescue	Salmon (air)	800-247-4324	<input checked="" type="checkbox"/> ALS <input type="checkbox"/> BLS
Lemhi County Ambulance	Salmon, North Fork (ground)	911	<input checked="" type="checkbox"/> ALS <input type="checkbox"/> BLS
			<input type="checkbox"/> ALS <input type="checkbox"/> BLS

5. Hospitals:							
Hospital Name	Address, Latitude & Longitude if Helipad	Contact Number(s)/Frequency	Travel Time		Trauma Center	Burn Center	Helipad
			Air	Ground			
Steele Memorial	707 Van Dreff, Salmon	208-756-5655	20 min.	1 hr.	<input checked="" type="checkbox"/> Yes Level: 4	<input type="checkbox"/> Yes <input checked="" type="checkbox"/> No	<input checked="" type="checkbox"/> Yes <input type="checkbox"/> No
Eastern Idaho Medical Center	3100 Channing Way, Idaho Falls	208-227-2000	45 min.	2.5 hrs.	<input checked="" type="checkbox"/> Yes Level: 2	<input checked="" type="checkbox"/> Yes <input type="checkbox"/> No	<input checked="" type="checkbox"/> Yes <input type="checkbox"/> No
St. Patrick's	500 W. Broadway, Missoula	800-228-7271	45 min.	2.5 hrs.	<input checked="" type="checkbox"/> Yes Level: 2	<input type="checkbox"/> Yes <input type="checkbox"/> No	<input checked="" type="checkbox"/> Yes <input type="checkbox"/> No
University of Utah Medical Center	50 N. Medical Dr., SLC	801-581-2121	3 hrs.	5.5 hrs.	<input checked="" type="checkbox"/> Yes Level: 1	<input checked="" type="checkbox"/> Yes <input type="checkbox"/> No	<input checked="" type="checkbox"/> Yes <input type="checkbox"/> No
Steele Memorial Clinic (walk-in)	805 Main St. Salmon	208-756-6212	-	1 hr.	<input checked="" type="checkbox"/> Yes Level: 5	<input type="checkbox"/> Yes <input checked="" type="checkbox"/> No	<input type="checkbox"/> Yes <input checked="" type="checkbox"/> No

6. Special Medical Emergency Procedures:
 Report all medical incidents to Cove Creek Communications on command. If the patient is a red/yellow, clear the command channel for emergency traffic. Using the Medical Incident Report (MIR), give required information to Cove Creek Communications including the preferred mode of transportation/extraction and current location. If non-incident medical resources are required, Cove Creek Communications will contact Central Idaho Dispatch to facilitate transportation of the patient

Check box if aviation assets are utilized for rescue. If assets are used, coordinate with Air Operations.

7. Prepared by (Medical Unit Leader): Name: Dale Pickering	Signature:
---	------------

8. Approved by (Safety Officer): Name: Jeff Bedke/Tony Erickson (t)	Signature:
--	------------

MEDICAL PLAN (ICS 206 WF)

Controlled Unclassified Information//Basic

Medical Incident Report

FOR A NON-EMERGENCY INCIDENT, WORK THROUGH CHAIN OF COMMAND TO REPORT AND TRANSPORT INJURED PERSONNEL AS NECESSARY.

FOR A MEDICAL EMERGENCY: IDENTIFY ON SCENE INCIDENT COMMANDER BY NAME AND POSITION AND ANNOUNCE "MEDICAL EMERGENCY" TO INITIATE RESPONSE FROM IMT COMMUNICATIONS/DISPATCH.

Use the following items to communicate situation to communications/dispatch.

1. **CONTACT COMMUNICATIONS / DISPATCH** (Verify correct frequency prior to starting report)
Ex: "Communications, Div. Alpha. Stand-by for Emergency Traffic."
2. **INCIDENT STATUS:** Provide incident summary (including number of patients) and command structure.
Ex: "Communications, I have a Red priority patient, unconscious, struck by a falling tree. Requesting air ambulance to Forest Road 1 at (Lat./Long.) This will be the Trout Meadow Medical, IC is TFLD Jones. EMT Smith is providing medical care."

Severity of Emergency / Transport Priority	<input type="checkbox"/> RED / PRIORITY 1 Life or limb threatening injury or illness. Evacuation need is IMMEDIATE Ex: Unconscious, difficulty breathing, bleeding severely, 2" - 3" burns more than 4 palm sizes, heat stroke, disoriented. <input type="checkbox"/> YELLOW / PRIORITY 2 Serious injury or illness. Evacuation may be DELAYED if necessary. Ex: Significant trauma, unable to walk, 2" - 3" burns not more than 1-3 palm sizes. <input type="checkbox"/> GREEN / PRIORITY 3 Minor injury or illness. Non-Emergency transport. Ex: Sprains, strains, minor heat-related illness.	
Nature of Injury or Illness & Mechanism of Injury		Brief Summary of Injury or Illness (Ex: Unconscious, Struck by Falling Tree)
Transport Request		Air Ambulance / Short Haul/Hoist Ground Ambulance / Other
Patient Location		Descriptive Location & Lat. / Long. (WGS84)
Incident Name		Geographic Name + "Medical" (Ex: Trout Meadow Medical)
On-Scene Incident Commander		Name of on-scene IC of incident within an incident (Ex: TFLD Jones)
Patient Care		Name of Care Provider (Ex: EMT Smith)

3. INITIAL PATIENT ASSESSMENT: Complete this section for each patient as applicable (start with the most severe patient)

Patient Assessment: See IRPG page 106

Treatment:

4. TRANSPORT PLAN:

Evacuation Location (if different): (Descriptive Location (drop point, intersection, etc.) or Lat. / Long.) Patient's ETA to Evacuation Location:

Helispot / Extraction Site Size and Hazards:

5. ADDITIONAL RESOURCES / EQUIPMENT NEEDS:

Example: Paramedic/EMT, Crews, Immobilization Devices, AED, Oxygen, Trauma Bag, IV/Fluid(s), Splints, Rope rescue, Wheeled litter, HAZMAT, Extrication

6. COMMUNICATIONS: Identify State Air/Ground EMS Frequencies and Hospital Contacts as applicable

Function	Channel Name/Number	Receive (RX)	Tone/NAC *	Transmit (TX)	Tone/NAC *
COMMAND					
AIR-TO-GRND					
TACTICAL					

7. CONTINGENCY: Considerations: If primary options fail, what actions can be implemented in conjunction with primary evacuation method? Be thinking ahead.

8. ADDITIONAL INFORMATION: Updates/Changes, etc.

REMEMBER: Confirm ETA's of resources ordered. Act according to your level of training. Be Alert. Keep Calm. Think Clearly. Act Decisively.

Incident within an Incident Plan

The Incident Commander is responsible for overall action in case of a serious accident.

ON SCENE

Upon occurrence of a "Medical Emergency" involving significant injury (Yellow or Red Only) or fatality within the incident, the highest qualified person on scene shall take control of the situation until the nearest Division /Group Supervisor arrives to assume control. Immediate and clear communication must be established between Operations and Division/Group Supervisors to determine who can arrive at the scene quickest and assume control of the situation. In the event of such an incident in camp or on incident roads, on-site personnel shall take control until an Operations Chief or Division/Group Supervisor arrive or Local Law Enforcement and/or Medical personnel have assumed control as the On-Scene Incident Commander.

Incident Communications or the On-Scene Incident Commander will take immediate action to clear all radio traffic on the incident "Command Channel" by broadcasting "Emergency Traffic Only". This will assist in quick and proper coordination for managing the IWI.

At no time during the incident will the name of the subject(s) be used over the radio.

Upon arrival at the incident scene, whoever has been designated to manage the incident (Operations Chief or Division/Group Supervisor) should take immediate actions to:

- Identify and mobilize medical personnel to the scene – notify them you are in charge.
- Coordinate appropriate transportation for injured personnel.
- Restrict unnecessary personnel from the accident scene.
- Secure the scene area and identify witnesses for investigation.

The nearest Safety Officer will respond immediately to the scene and assist the On-Scene Incident Commander and shall be responsible for initiating the proper investigation and documentation.

ICP

Specific processes for C&G notification, day and night, will be determined upon arrival at each incident.

Immediately upon notification of a serious incident requiring emergency action the communications unit will make radio and group text notification to the Incident Commander, Medical Unit Leader, Planning Operations, Safety Officer, and Air Operations. All will respond to the incident communications facility in order to support the IWI. The Medical Unit Leader or other appropriate C&G will normally physically operate the radio during the patient assessment/care portion of the incident, the RADO will be responsible for documentation. In the absence of the Incident Commander, The Plans Chief will assume the supervisory role. For non-serious (Green) incidents, the Safety Officer or Medical Unit Leader will notify the appropriate overhead as necessary.

Plans Chief, Logistics Chief, Finance Chief, Information Officer and Situation Unit Leader shall be notified and may be requested to respond to incident communications as dictated by specific emergency needs.

Information Officer is responsible for managing external communication. All information released from the incident shall be through the Information Officer with the approval of the Incident Commander.

The Incident Commander will make contact with the Agency Administrator who will in turn contact appropriate officials of the agency. If the accident involves a fatality, the Agency Administrator will be responsible for implementing agency specific protocols for dealing with the incident.

Approved by:



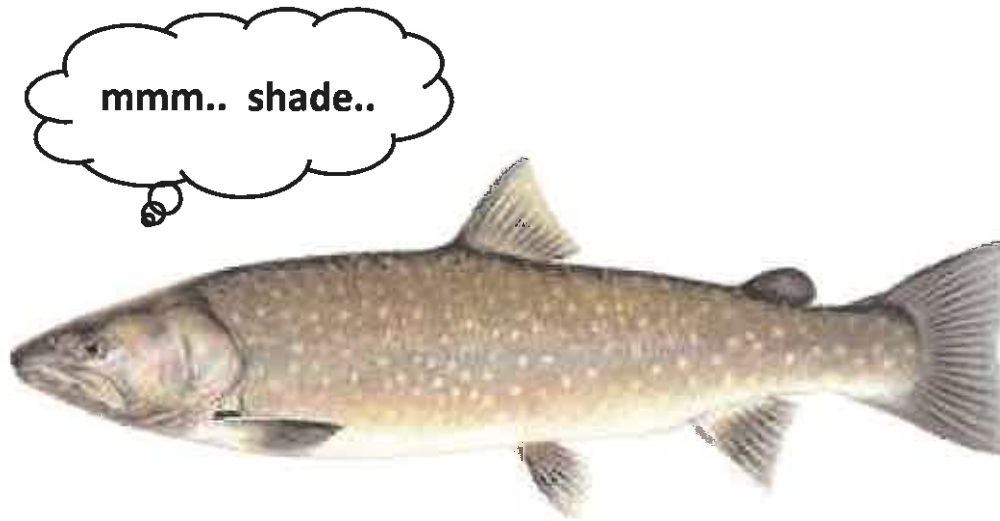
Incident Commander

Date

8/6/19

Resource Advisor's Message – August 10, 2019

Bull Trout



Bull Trout (*Salvelinus confluentus*)

Bull trout are a cold-water fish native to many Idaho streams and are protected under the Endangered Species Act.

There was a time when bull trout, like most salmonids, were wildly abundant in the six western states of Oregon, Washington, California, Nevada, Idaho and Montana.

Bull trout were once found in about 60 percent of the Columbia River Basin, but today, they occur in less than half of their historic range, with scattered populations in portions of Oregon, Washington, Nevada, Idaho and Montana. In the Klamath River Basin, bull trout occur in only 21 percent of their historic range. They no longer exist in California. Found to be in peril by the U.S. Fish and Wildlife Service, bull trout were listed as a threatened species throughout their range in 1999.

Bull trout are an indicator of relatively pristine stream and lake conditions. They are grouped with the char, within the salmonid family of fish.

They have the most specific habitat requirements of salmonids, including the "Four C's": **Cold, Clean, Complex and Connected habitat.**



Almost all perennially-flowing streams on the SCNF were designated critical habitat for bull trout in 2010. They will start spawning next week. The SCNF has a programmatic agreement with USFWS for fire suppression operations in bull trout watersheds. Mitigations include minimizing removal of stream canopy & instream operations like drafting and avoiding introduction of aquatic invasive species and contaminants like sediment & fuel.

The bull trout thank you for your support!



GREAT BASIN INCIDENT REPLACEMENT GUIDELINES

Author: Great Basin Finance Section Chiefs

In accordance with the NWCG Standards for Interagency Incident Business Management (Chapter 30), personnel may request replacement of standard equipment and supplies (NFES) that were damaged, lost, consumed, or worn out during the incident. Personnel need to document the request on the most applicable form – Incident Replacement Requisition (OF-315), Saw Parts Order, or General Message (OF-213). This request should include a description of the use on the incident and/or why the item(s) need to be replaced. Requests need to be signed by the Incident Supervisor (DIVS, TFLD, etc.) prior to taking to Supply. **Worn out or damaged property will be turned into the Supply Unit.**

Approval for replacement of non-standard items (**Non NFES**) may need to be approved by the Incident Business Advisor (IBA). You should initiate this process at least two days prior to demob.

Personnel who need to replace/repair damaged property will document the request on an OF-289, Property Loss or Damage Report. This form requires Incident Supervisor recommendation as well as Subject Matter Expert determination, if appropriate. Once that information has been obtained, the form is then given to the Comp/Claims Unit Leader, who will track the claim and facilitate approval via the Finance Section Chief. (If there is not a COMP assigned to the incident, give the form directly to the FSC.) Additional documentation may be required by the FSC. Based on the delegation of authority, the final authorization as to whether or not the items can be replaced or repaired with incident funds may come from the Finance Section Chief, Incident Business Advisor, or other individual as identified by the incident agency. After approval, the Supply Unit or Ordering Manager will issue S numbers. **Damaged property will be turned into the Supply Unit.**

Items originally provided through use of preparedness funds which need to be replaced due to **normal wear and tear** (e.g. worn out tire tread, worn out chain saw bar, 5yr old GPS that stops working, etc.) should be accomplished using home unit funds, not incident funds. If government property was damaged on the incident due to a specific event, (e.g. wind event destroys a tent) the incident could, upon receipt of required documentation and proof of damage, authorize replacement. **Replacement of non standard items that are worn out is the responsibility of the home unit.**

In accordance with the terms of their agreement, contracted resources may obtain the following items from Supply:

- plastic canteens
- plastic sheeting
- replacement radio & headlamp batteries

Any contractor claim for damages or other replacement items must follow the contract claims process and be adjudicated by a warranted contracting officer.

PROPERTY LOSS OR DAMAGE REPORT Fire Suppression		1. CREW NAME OR NO. [O#, A#, E# or C#]	2. ID NO. (FORM of-288, Emerg. Firefighter Time Report) Not Applicable
		3. ISSUED TO (Name and Address) (Individual Name [point of contact], Home Unit & Address, email and telephone numbers – fax, cell, work, etc.)	
4. ISSUING OFFICE OR CAMP			
5. FIRE NAME	6. FIRE NO.	7. TYPE EMPLOYEE (Mark one with "X") <input type="checkbox"/> Regular Govt <input type="checkbox"/> Casual Firefighter <input type="checkbox"/> Other _____	
8. DESCRIPTION OF PROPERTY LOST OR DAMAGED (Include Property No. if applicable) If request is for such items as parts of an equipment or vehicle, include approximate year of age of equipment.)			QUANTITY
a.			
b.			
c.			
9. Employee report on circumstances of loss or damaged to property listed: (Be specific – date, place, division on fire; be descriptive of damage, loss, how did it occur, etc.)			
10. SIGNATURE			11. DATE
12. Witness report: (Be specific –date, place, division on fire. Be descriptive of damage, loss, how did it occur, what did you see, etc.)			
13. SIGNATURE			14. DATE
15. Fire Boss or Property Control Officer comments regarding loss or damage: <div style="text-align: center; background-color: #e0e0e0; padding: 5px;"> See GREAT BASIN ATTACHMENT TO OF-289. Do not fill out this block. </div>			
16. SIGNATURE	17. TITLE	18. DATE	

GREAT BASIN ATTACHMENT TO OF-289

Claim # _____ **Claimant Name:** _____ **Claimant RO#** _____

Incident Supervisor Name and Incident Position: _____

Comments (provide complete and legible knowledge of damage/destruction and how it was caused by the incident):

Signature & Date: _____

Do Not Recommend Recommend

Email & Phone #: _____

Subject Matter Expert Name: _____

Ground Support Communications Computer Specialist Other: _____

Comments (provide justification in support of decision):

Signature & Date: _____

Do Not Recommend Recommend

Email & Phone #: _____

Return form to: _____ (FSC or COMP)

Finance – Review package for documentation and completeness. Forward package to approver.

Incident Agency Representative Name and Position: _____

(IBA/Fire Admin Representative, etc. *Note: This final approval may be delegated to the IMT IC or FSC*)

Decision:

Not Approved Approved

Approved with the following contingencies:

Signature & Date: _____

Contact Phone: _____ Email: _____

Supply Unit:

Sent to Dispatch (Date): _____

Resource Order Assigned: **S**-_____

COVE CREEK ICP PHONE NUMBERS

INCIDENT COMMANDER	208-242-4897
PLANNING	208-254-4474
SITUATION	208-254-4931
FINANCE	208-240-8650
SAFETY	208-252-6069
MEDICAL	208-244-6527
LOGISTICS	208-244-6084
COMMUNICATIONS	208-261-1406
PUBLIC INFORMATION	208-254-5778

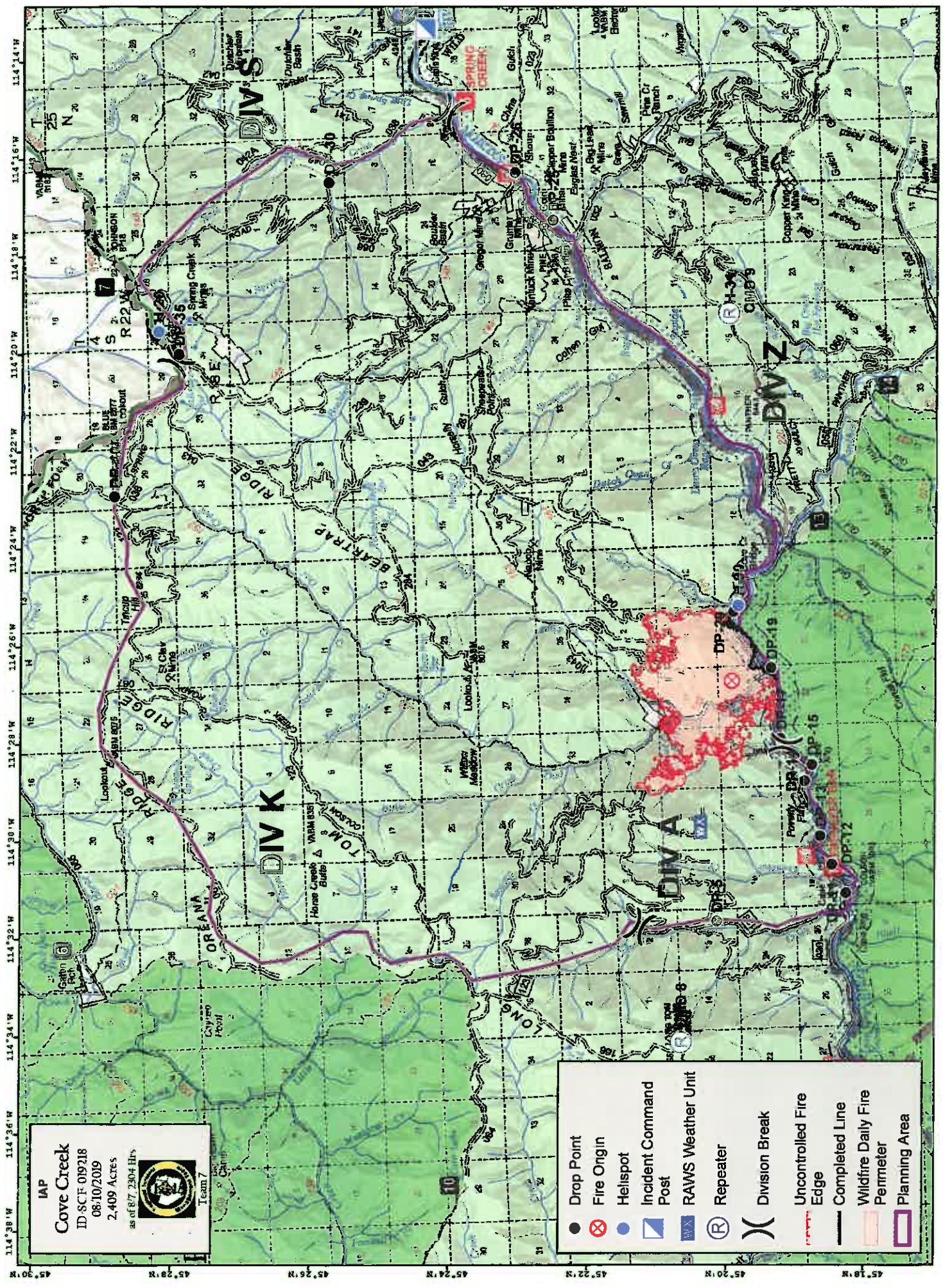
GREAT BASIN IMT LINE SUPPLY ORDER FORM

Date & Time Order Received	Order # (DIVS + #)	Location & Time for Delivery	Mode of Delivery
		(Division#, Helispot#, Drop Point#, Lat. Long, Spike Camp)	(Drive, Helicopter Internal, Long Line, DIVS to Pick up)
Date:		Location:	Ground Support:
Time:		Date/Time needed:	Helibase:
Order received in Communication		Time:	Name:
Order received in Supply		Time:	Name:
Order received in Ground Support		Time:	Name:
Order received by FDUL		Time:	Name:
Order received by Helibase		Time:	Name:

Accountable Property #

All crew level orders will be placed through DIVS

#	Qty	Item	Shipped	#	Qty	Item	Shipped
1		Meals: Breakfast		30		Folding Tank (1500 gal)	ea
2		Meals: Lunches		31		Pumpkin, 1500 Gal	ea
3		Meals: Dinners		32		Pumpkin (3000 / 6000 Gal)	ea
4		Meals: MRE's, # of cases 12/case)		33		Hose, 1.5" (100'roll)	roll
5		Water, cubic (5gal) ea		34		Hose, 1" (100'roll)	roll
6		Gatorade Case		35		Hose, ¾ (Garden) (50'roll)	roll
7		Water Bottled Case		36		Reducer, 1.5" x 1"	ea
8		Toilet Paper roll		37		Reducer, 1" x ¾"	ea
9		Bath in a bag, (100/box) Box/ea		38		Gated Y, 1.5"	ea
10		Batteries: AA Box (24 ea/box)		39		Gated Y, 1"	ea
11		Batteries: Specify Type AAA / C / D ea		40		Gated Y, ¾"	ea
12		Flagging: Specify Type roll		41		Shut-off Valve, ¾"	ea
13		Fiber Tape roll		42		In-line T, 1.5" x 1"	ea
14		Parachute Cord ft/roll		43		Nozzle, 1.5"	ea
15		Garbage Bags Box/ea		44		Nozzle, 1"	ea
16		20 Man First Aid Kit ea		45		Nozzle,, ¾"	ea
17		Fusee Case		48	/	Double female, Specify 1" or 1 ½"	ea /
18		Shovel ea		49	/	Double male, Specify 1" or 1 ½"	ea /
19		Pulaski ea		50		Inline tees, 1 ½" - 1"	ea
20		Combi ea		General Kits (Order Gas Separately)			
21		Backpack Pump, full ea		51		Chainsaw Kit	ea
22		Backpack Pump, empty ea		52		Sprinkler Kit	ea
23		Drip Torch, Full ea		53		High Pressure Pump Kit, includes pump and 1 quarts 2 cycle oil	ea
24		Drip Torch, Empty ea					
25		Visqueen feet/roll		54		Lightweight Pump Kit, includes 1 quart 2 cycle oil	ea
26		Foam 5 GAL/ea					
27				55		Volume Pump Kit, includes pump and 2 quarts Oil - SAE 10-30 WT	ea
28							
29		½ MILE HOSE PACKAGE # of Packages ()		FUEL			
		Item	Quantity	56		Fuel, Unleaded	Gal
		1 ½" Hose	30	57		Fuel, Premium (chainsaws) 89 octane or better (Prefer Ethanol Free)	Gal
		1" Hose	15				
		¾" Hose	15	58		Fuel, Diesel	Gal
		1 ½" - 1" Reducer	15	59		Fuel, Drip Torch (3:1 mix)	Gal
		1" Nozzle (KK/Forester)	15			Oil	
		1 ½" Y	15	60		Bar Oil	QT/Gal
		1" - ¾" Reducer	15	61		2-cycle oil: Saw	ea
		¾" Y	15			Air Support	
		¾" Nozzle	15	62		Swivel, size: _____	ea
		1" and 1 ½" double female	3/3	63		Lead line	ea
		1" and 1 ½" double male	3/3	64		Cargo Net, Size: _____	ea
		Nap Sack	3	65		Slingable Blivet, suppression	ea



IAP
Cove Creek
 ID: SCF-019218
 08/10/2019
 2,409 Acres
 as of 8/7, 2304 Hrs

Team 7

- Drop Point
- ⊗ Fire Origin
- Helispot
- ▢ Incident Command Post
- RAWS Weather Unit
- Ⓡ Repeater
-) Division Break
- Uncontrolled Fire Edge
- Completed Line
- Wildfire Daily Fire Penimeter
- Planning Area