



# Kyune Creek RX

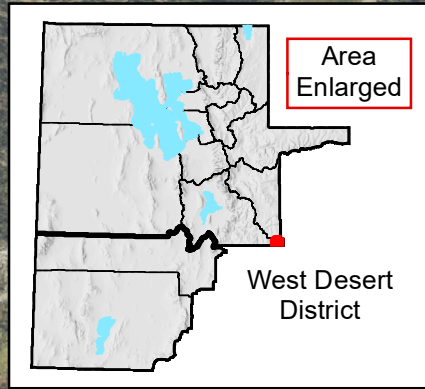
Operations Map - Map Created Sep 23, 2022



R 8 E

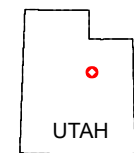
R 9 E

R 9 W



110°58'0"W 110°57'30"W 110°57'0"W 110°56'30"W 110°56'0"W 110°55'30"W 110°55'0"W 110°54'30"W 110°54'0"W 110°53'30"W 110°53'0"W 110°52'30"W

U.S. DEPARTMENT OF THE INTERIOR  
BUREAU OF LAND MANAGEMENT  
No warranty is made by the Bureau of Land Management as to the accuracy, reliability, or completeness of these data for individual use or aggregate use with other data.



N  
1:20,000  
(when plotted at 11" x 17")

- |                |                     |                          |
|----------------|---------------------|--------------------------|
| Structures     | Vantage Points      | Goshawk Nests            |
| Helispot       | Mobile Weather Unit | Goshawk Nest Buffer      |
| Water Source   | Staging Area        | View from cabin          |
| Drop Point     | Existing Road       | Kyune Creek 300ft Buffer |
| Dozer/Handline |                     |                          |

