



Kyune Creek RX

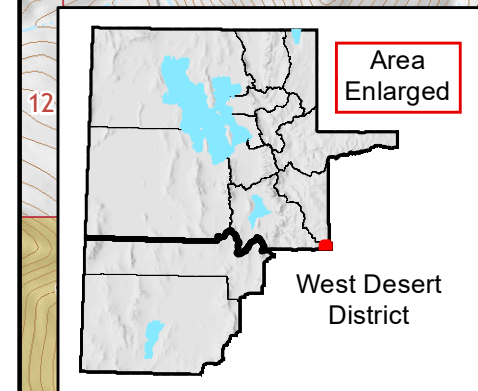
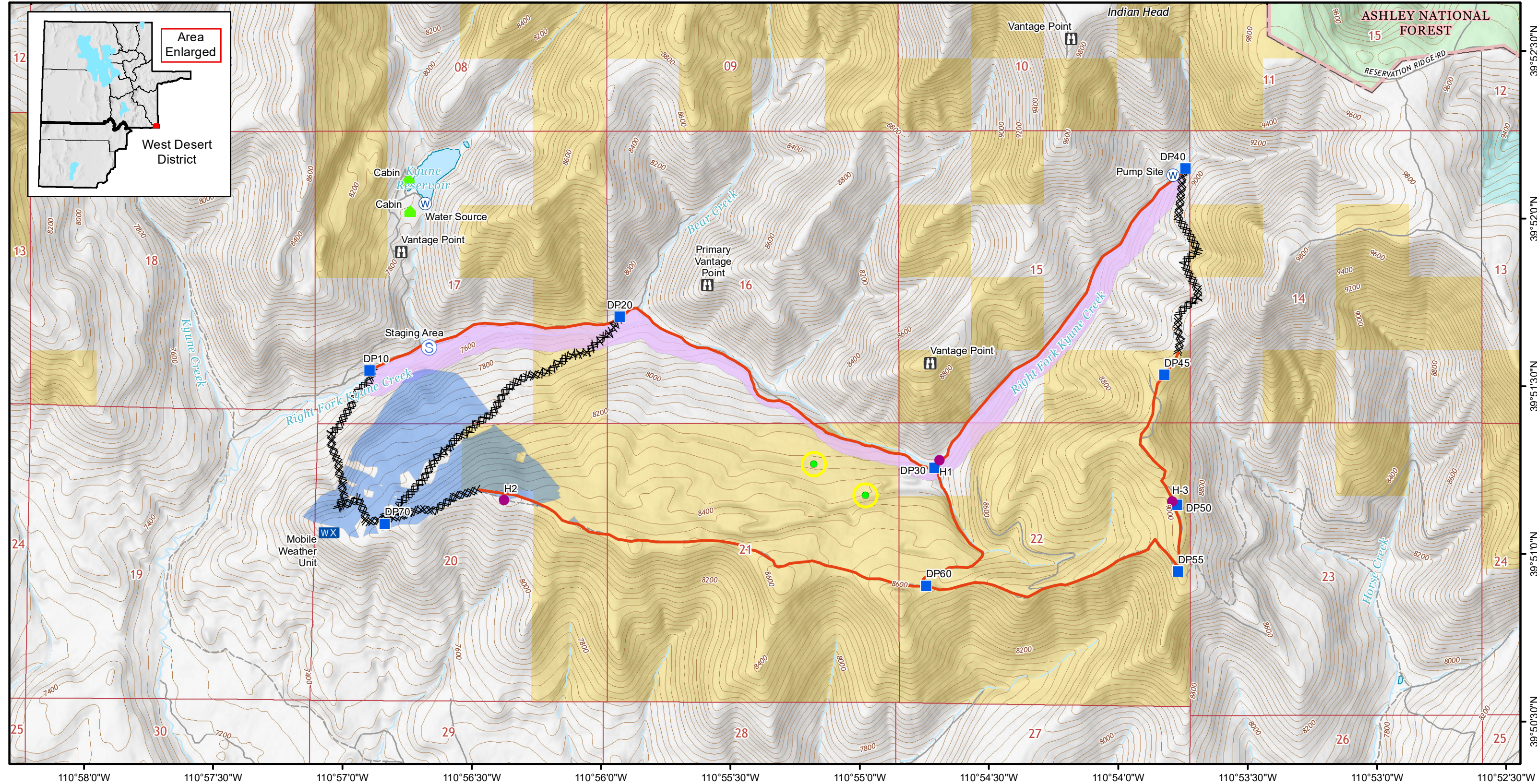
Operations Map - Map Created Sep 23, 2022



R 8 E

R 9 E

R 9 W



T 11 S

24

25

39°52'30"N

39°52'0"N

39°51'30"N

39°51'0"N

39°50'30"N

110°58'0"W 110°57'30"W 110°57'0"W 110°56'30"W 110°56'0"W 110°55'30"W 110°55'0"W 110°54'30"W 110°54'0"W 110°53'30"W 110°53'0"W 110°52'30"W

U.S. DEPARTMENT OF THE INTERIOR
BUREAU OF LAND MANAGEMENT
No warranty is made by the Bureau of Land Management as to the accuracy, reliability, or completeness of these data for individual use or aggregate use with other data.



N
1:20,000
(when plotted at 11" x 17")

- Structures
- Drop Point
- Mobile Weather Unit
- Goshawk Nests
- BLM
- Helispot
- Vantage Points
- Staging Area
- Goshawk Nest Buffer
- Private
- Water Source
- Existing Road
- View from cabin
- State
- Dozer/Handline
- Kyune Creek 300ft Buffer
- USFS

