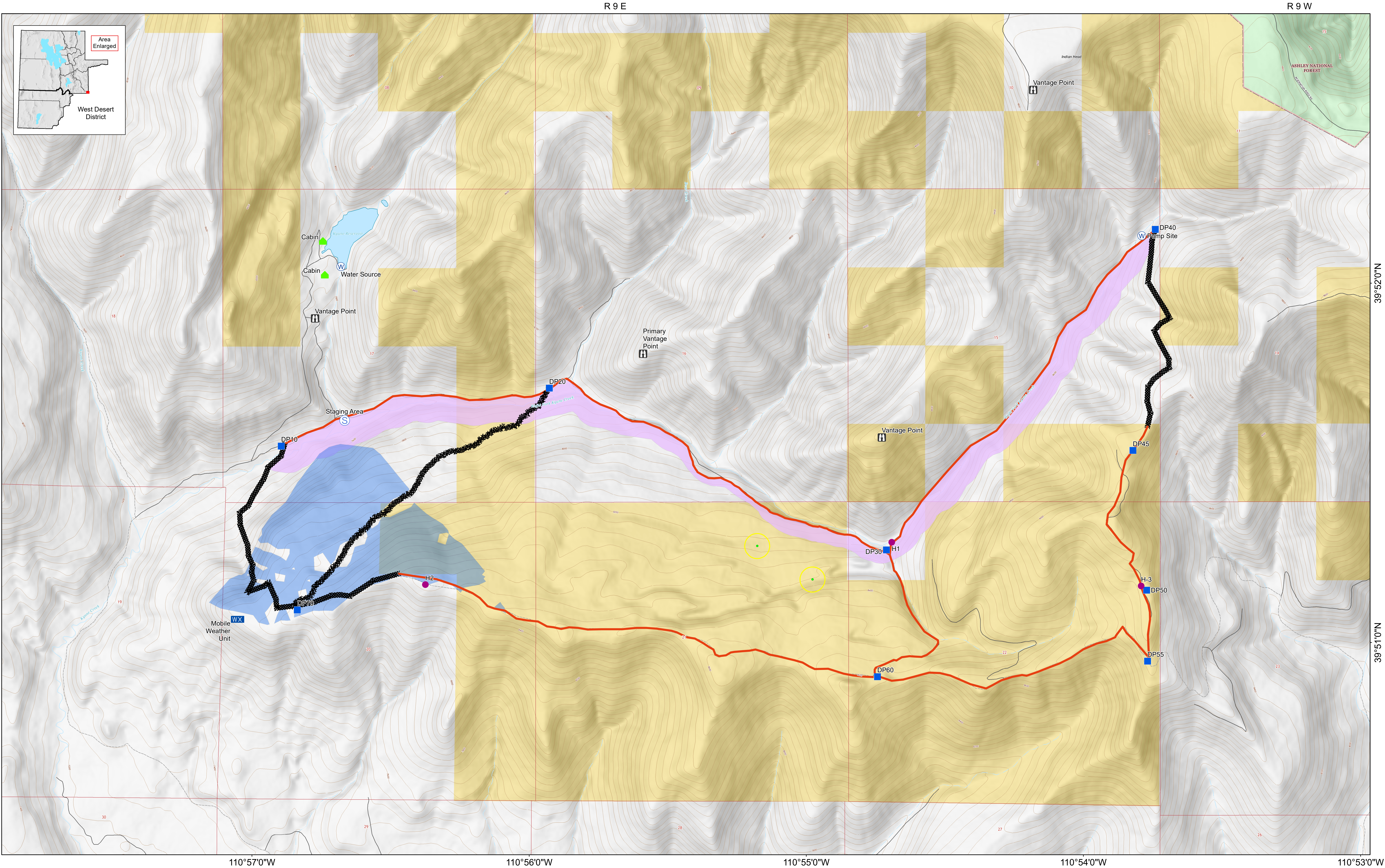


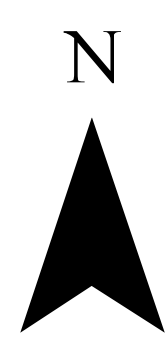
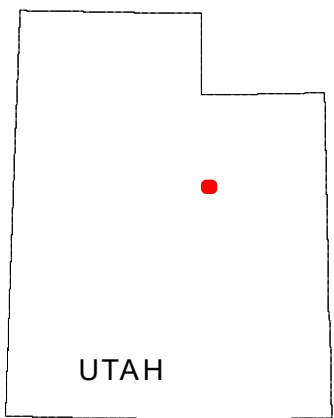


# Kyune Creek RX

Operations Map - *Map Created Sep 23, 2022*



U.S. DEPARTMENT OF THE INTERIOR  
BUREAU OF LAND MANAGEMENT  
No warranty is made by the Bureau of Land Management as to the accuracy, reliability, or completeness of these data for individual use or aggregate use with other data.



1:6,000  
(when plotted at 36" x 48")

- Structures
- Helispot
- Water Source
- Drop Point
- Vantage Points
- Mobile Weather Unit
- Staging Area
- Incident Command Post
- Helibase
- Camp
- Highway Junction
- Goshawk Nests
- Existing Road
- Cozer/Handline
- Goshawk Nest Buffer
- View from cabin
- Kyune Creek 300ft Buffer
- BLM
- Private
- USFS

