

Meadow Creek Fire
 UT-SCS-190412
 Repair Map
 NAD 83 12N
 September 13, 2019
 4,231 Acres



Legend

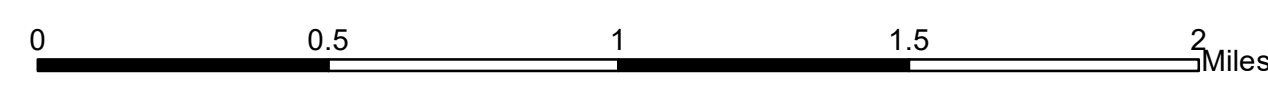
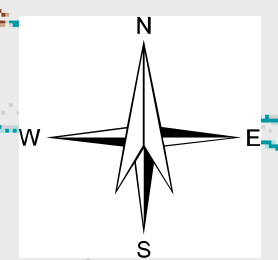
- Dip Site
- Drop Point
- Fire Origin
- WX Mobile Weather Unit
- Other
- Division Break
- Completed Dozer Line
- Completed Hand Line
- Completed - Inspected
- Repair Needed
- Unknown
- Interstates and Highways
- Roads, Not Maintained
- Roads, Not Maintained
- Completed - Inspected
- Other - Local Agencies Will Complete
- Retardant
- Bureau of Land Management (BLM)
- Private
- State Parks, Recreation and Wildlife
- US Forest Service (USFS)

38°54'0"N

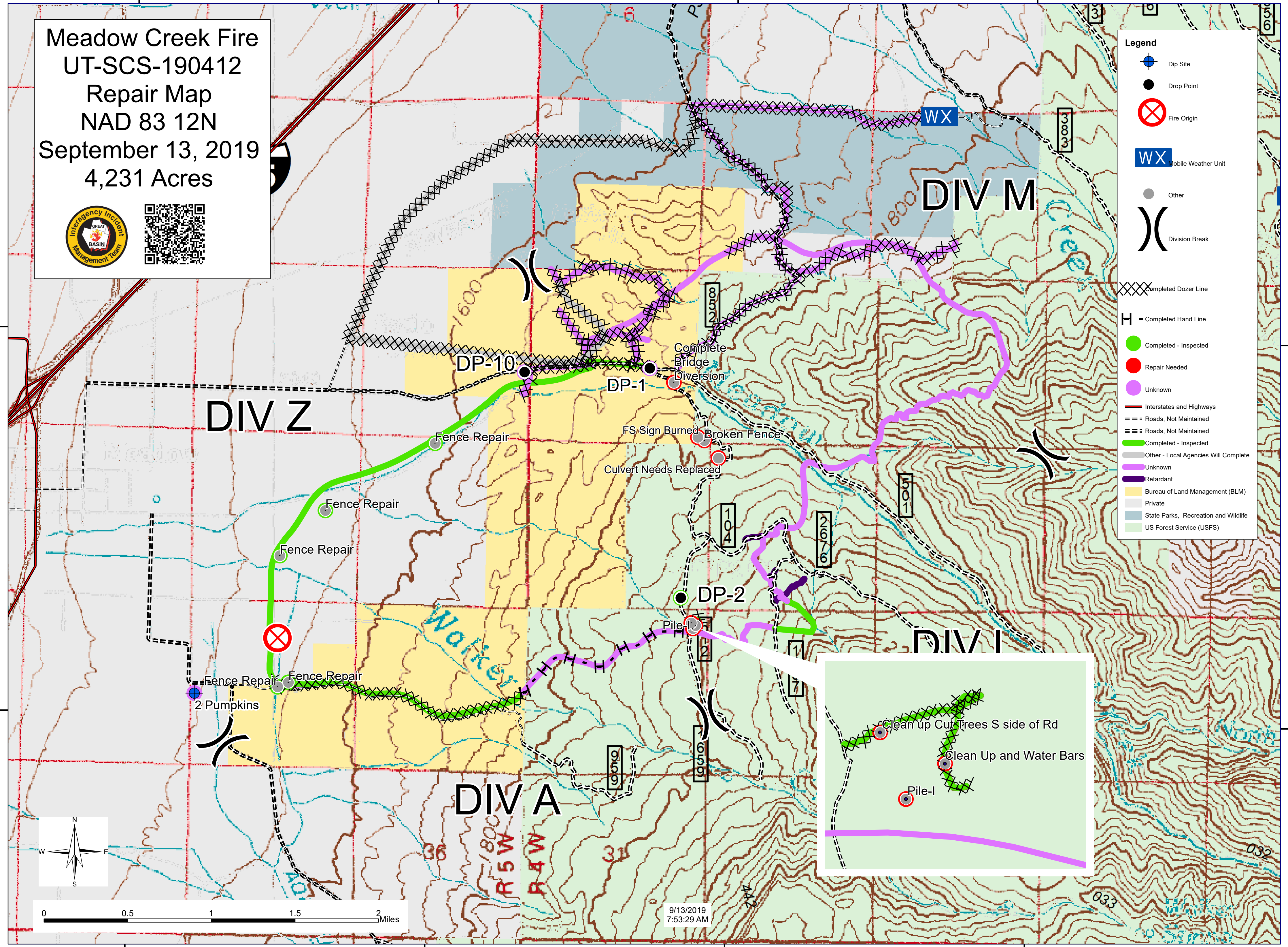
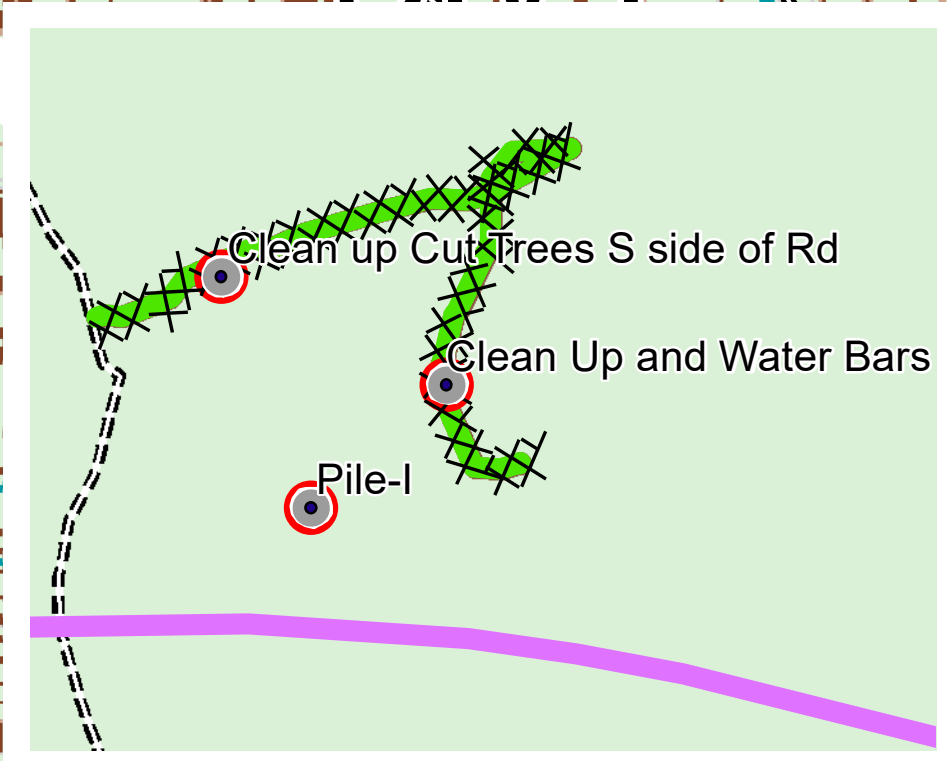
38°54'0"N

38°52'0"N

38°52'0"N



9/13/2019
 7:53:29 AM



112°24'0"W

112°22'0"W

112°20'0"W

112°18'0"W