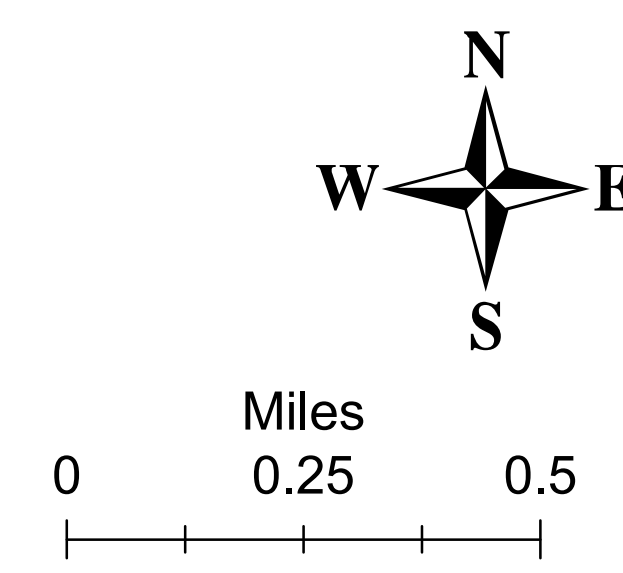


# Repair Briefing Map

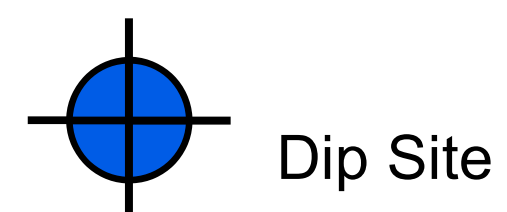
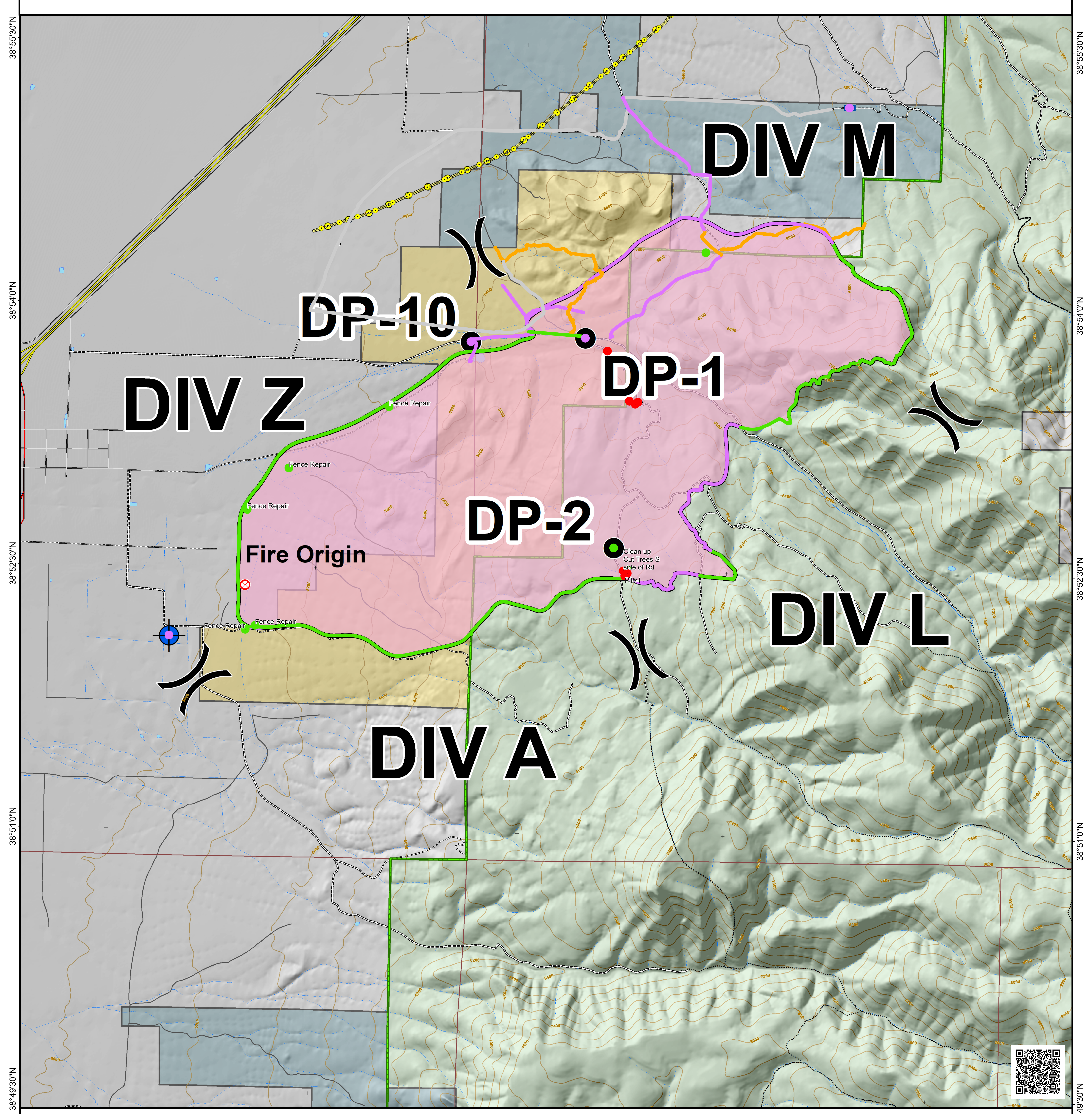
## Meadow Creek UT-SCS 190412

### 09/14/2019

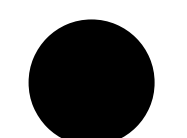
Approx 4,231 acres  
as of 09/12/2019 0032 hrs



9/13/2019 21:36 hrs  
Map Produced By:  
mtoone



Dip Site



Drop Point



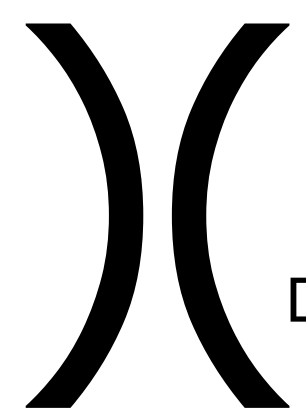
Fire Origin



Gate



Mobile Weather Unit



Division Break



Completed Line



Wildfire Daily Fire Perimeter



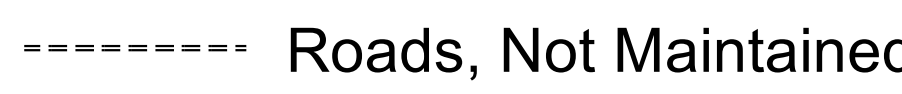
Power Transmission Lines



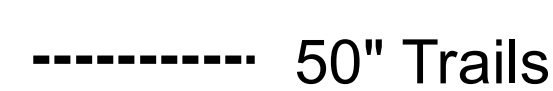
Interstates and Highways



Paved Road



Roads, Not Maintained



50' Trails



60' Trails



Trails Open to All



Non-Motorized Trails



Forest Boundary



County Lines



US Forest Service (USFS)



Bureau of Land Management (BLM)



State Parks, Recreation and Wildlife



Private

38°55'30"N  
38°54'0"N  
38°52'30"N  
38°51'0"N  
38°49'30"N

38°55'30"N  
38°54'0"N  
38°52'30"N  
38°51'0"N  
38°49'30"N

