

112°24'0"W 112°23'30"W 112°23'0"W 112°22'30"W 112°22'0"W 112°21'30"W 112°21'0"W 112°20'30"W 112°20'0"W 112°19'30"W 112°19'0"W 112°18'30"W 112°18'0"W 112°17'30"W



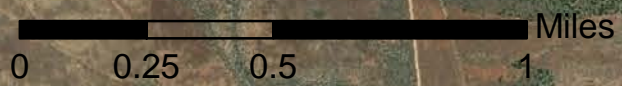
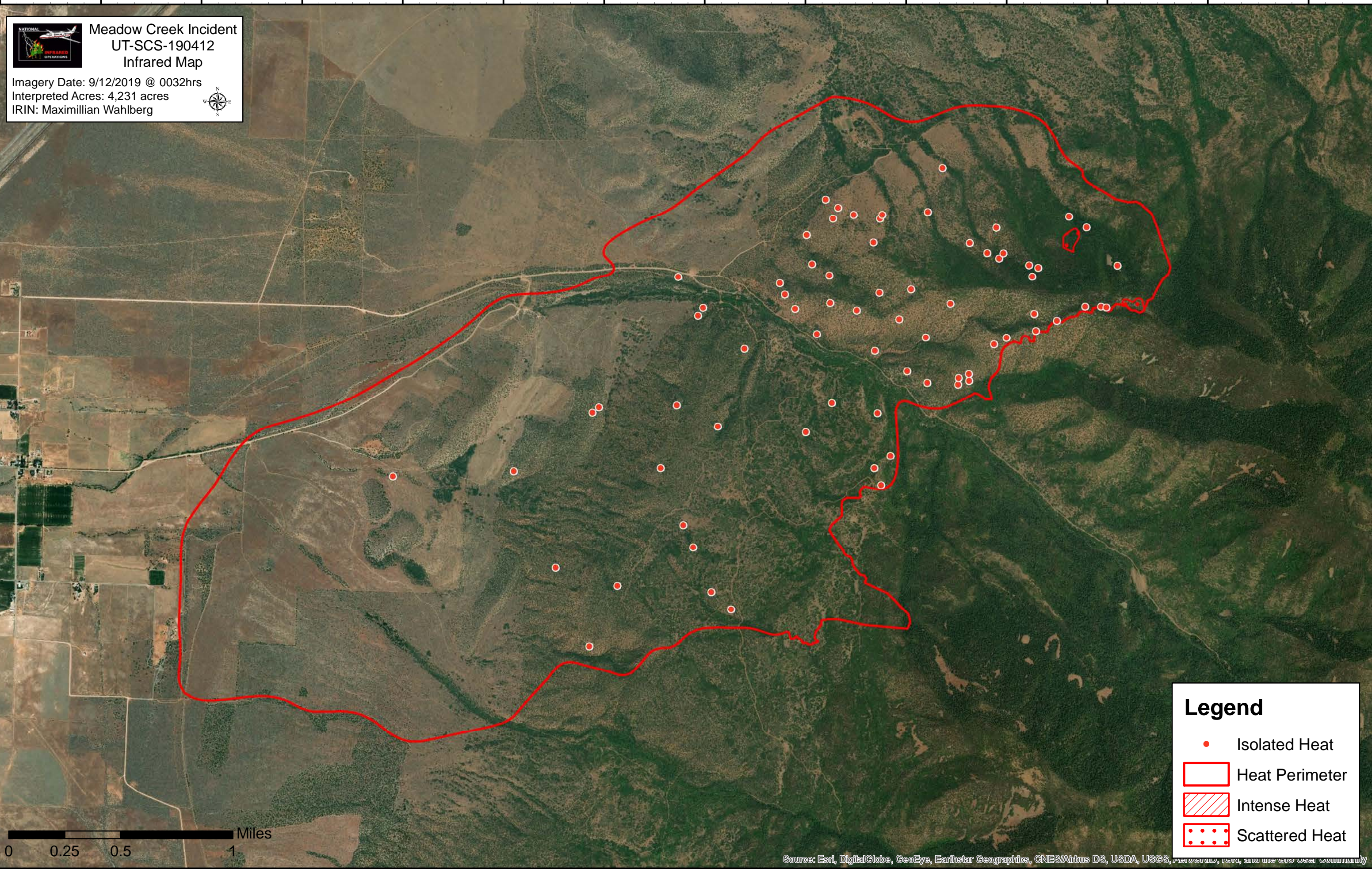
# Meadow Creek Incident UT-SCS-190412 Infrared Map

Imagery Date: 9/12/2019 @ 0032hrs  
Interpreted Acres: 4,231 acres  
IRIN: Maximillian Wahlberg



38°54'30"N  
38°54'0"N  
38°53'30"N  
38°53'0"N  
38°52'30"N  
38°52'0"N  
38°51'30"N

38°54'30"N  
38°54'0"N  
38°53'30"N  
38°53'0"N  
38°52'30"N  
38°52'0"N



### Legend

- Isolated Heat
- Heat Perimeter
- / / / / / Intense Heat
- ● ● ● ● Scattered Heat

Source: Esri, DigitalGlobe, GeoEye, Earthstar Geographics, CNES/Airbus DS, USDA, USGS, AeroGRID, IGN, and the GIS User Community

112°23'30"W 112°23'0"W 112°22'30"W 112°22'0"W 112°21'30"W 112°21'0"W 112°20'30"W 112°20'0"W 112°19'30"W 112°19'0"W 112°18'30"W 112°18'0"W 112°17'30"W