


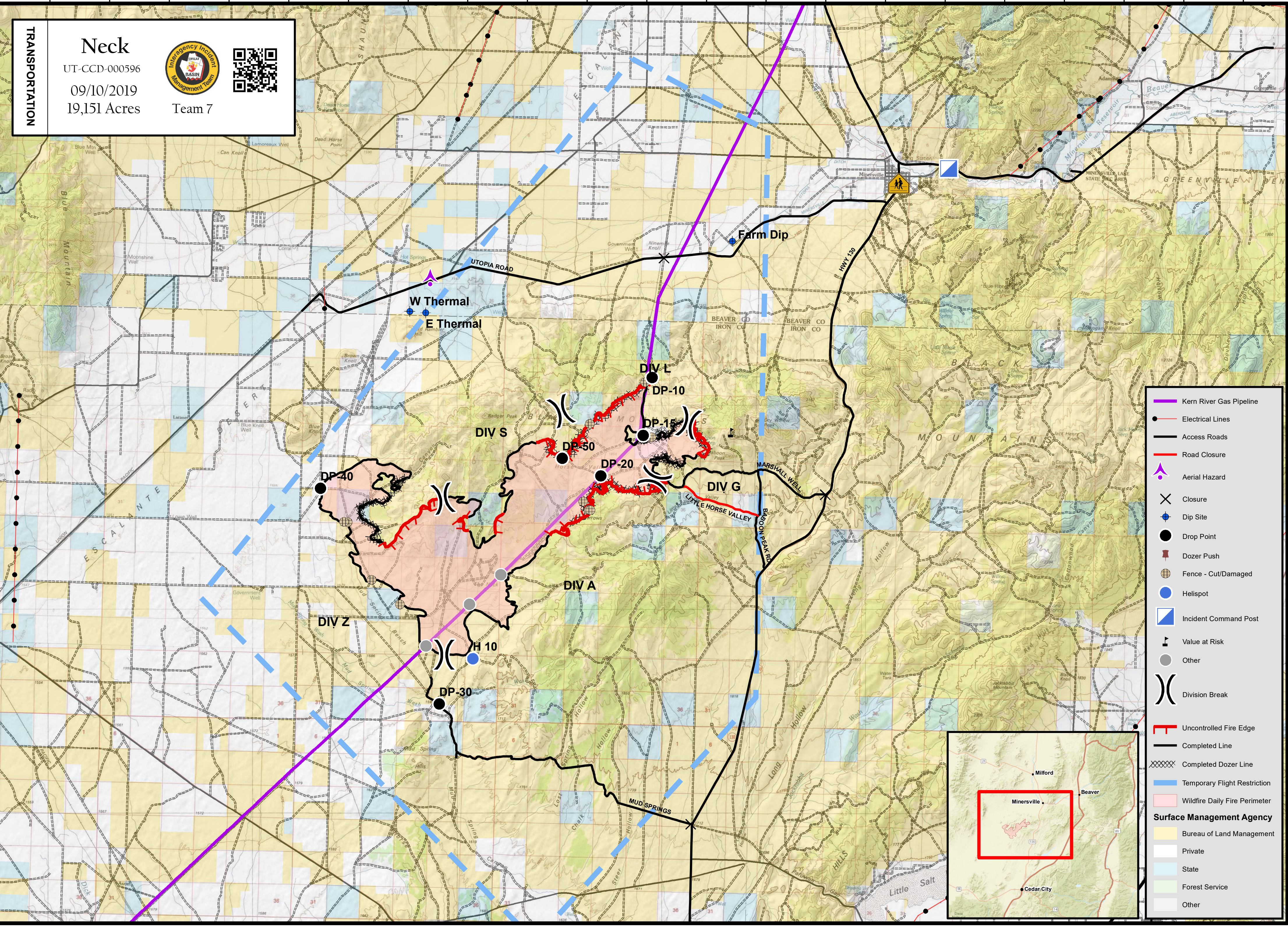
113°24'W 113°22'W 113°20'W 113°18'W 113°16'W 113°14'W 113°12'W 113°10'W 113°8'W 113°6'W 113°4'W 113°2'W 113°0'W 112°58'W 112°56'W 112°54'W 112°52'W 112°50'W 112°48'W 112°46'W 112°44'W

38°16'N 38°14'N 38°12'N 38°10'N 38°8'N 38°6'N 38°4'N 38°2'N 38°0'N 37°58'N 37°56'N 37°54'N

**TRANSPORTATION**

**Neck**  
 UT-CCD-000596  
 09/10/2019  
 19,151 Acres  
 Team 7

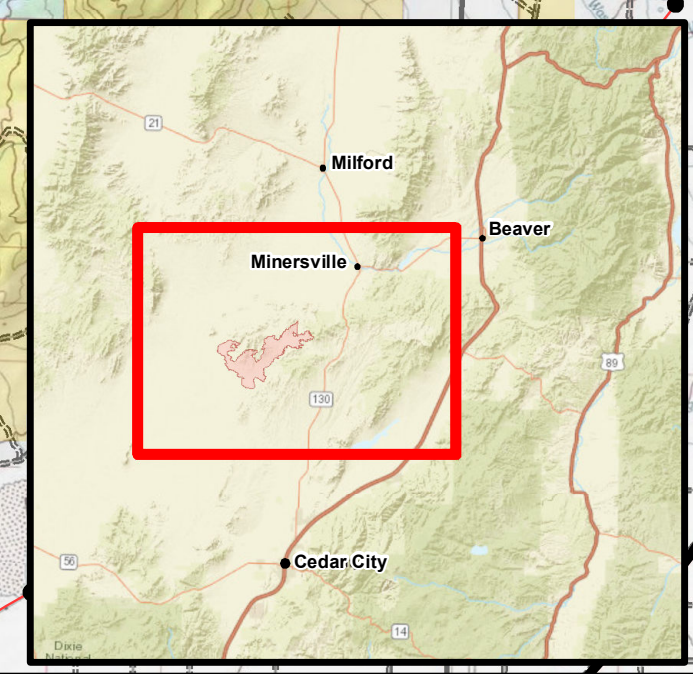




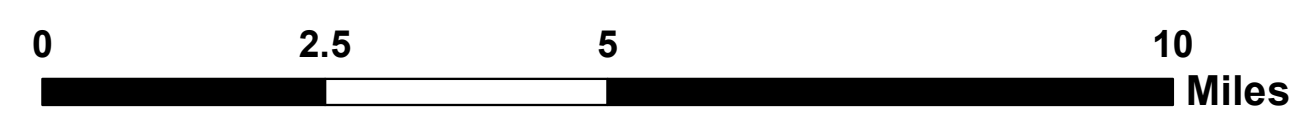
- Kern River Gas Pipeline
- Electrical Lines
- Access Roads
- Road Closure
- Aerial Hazard
- Closure
- Dip Site
- Drop Point
- Dozer Push
- Fence - Cut/Damaged
- Helispot
- Incident Command Post
- Value at Risk
- Other
- Division Break
- Uncontrolled Fire Edge
- Completed Line
- Completed Dozer Line
- Temporary Flight Restriction
- Wildfire Daily Fire Perimeter

**Surface Management Agency**

- Bureau of Land Management
- Private
- State
- Forest Service
- Other



**Coordinate System:** NAD 1983 UTM Zone 12N  
**Map Scale:** 1:107,610, 1 inch = 8,968 feet



**TRANSPORTATION**