
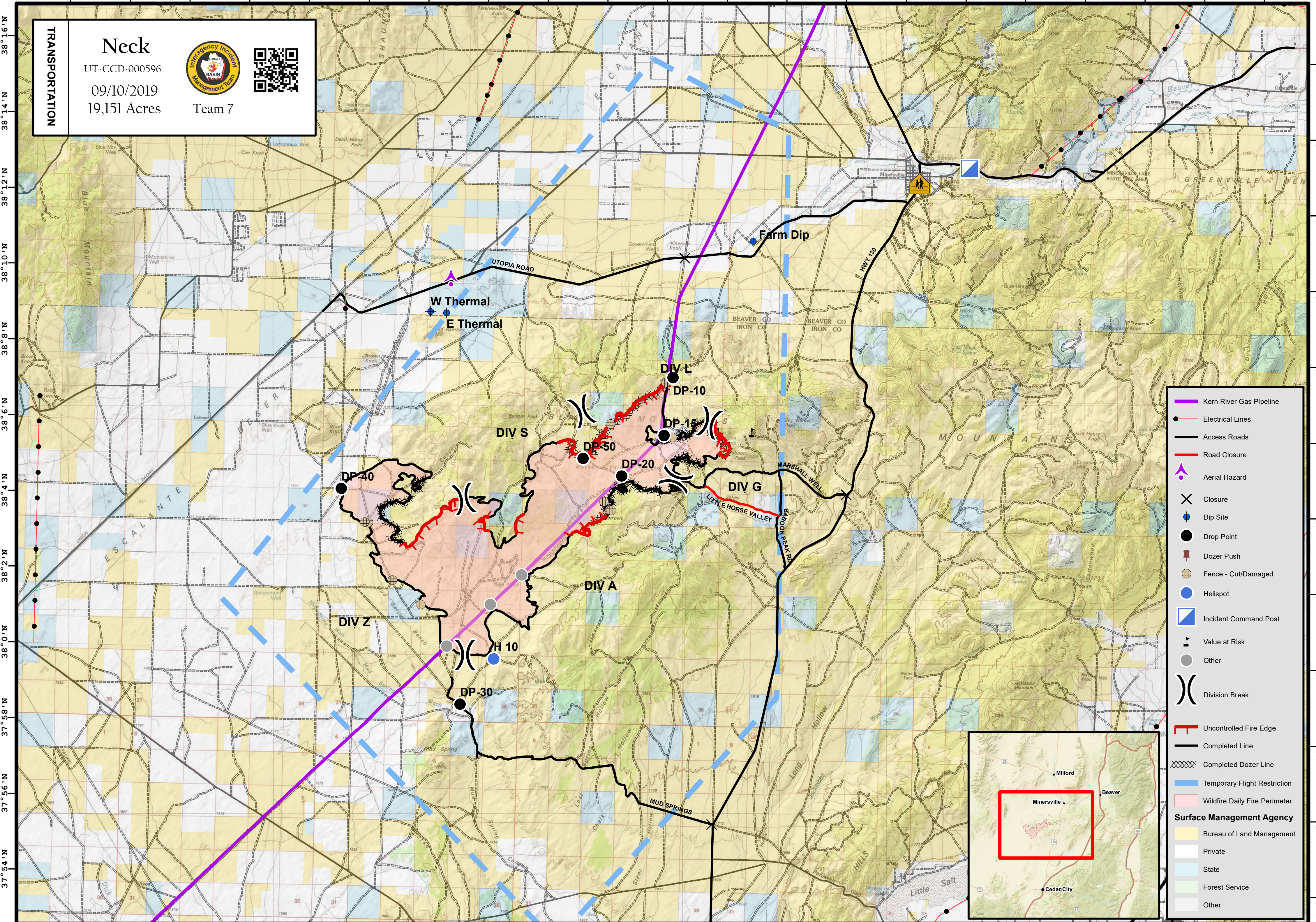


113°24'W 113°22'W 113°20'W 113°18'W 113°16'W 113°14'W 113°12'W 113°10'W 113°8'W 113°6'W 113°4'W 113°2'W 113°0'W 112°58'W 112°56'W 112°54'W 112°52'W 112°50'W 112°48'W 112°46'W 112°44'W

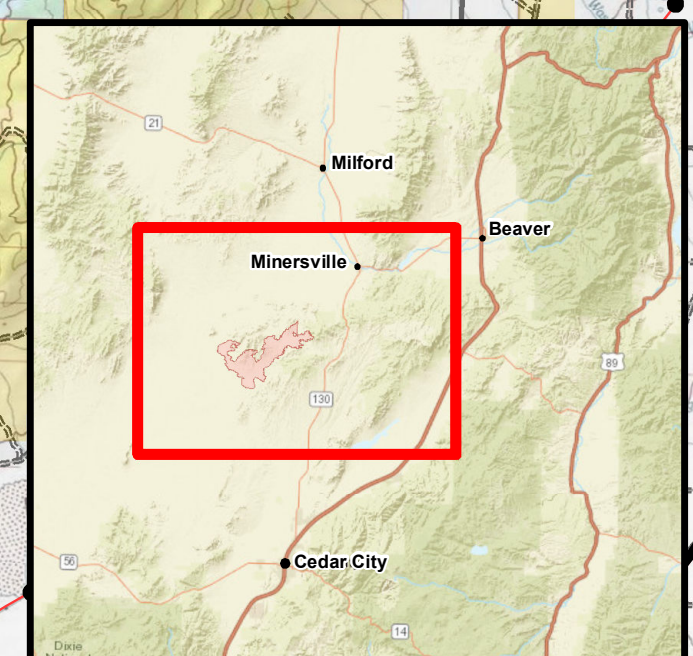
TRANSPORTATION

Neck
 UT-CCD-000596
 09/10/2019
 19,151 Acres
 Team 7





- Kern River Gas Pipeline
- Electrical Lines
- Access Roads
- Road Closure
- Aerial Hazard
- Closure
- Dip Site
- Drop Point
- Dozer Push
- Fence - Cut/Damaged
- Helispot
- Incident Command Post
- Value at Risk
- Other
- Division Break
- Uncontrolled Fire Edge
- Completed Line
- Completed Dozer Line
- Temporary Flight Restriction
- Wildfire Daily Fire Perimeter
- Surface Management Agency**
- Bureau of Land Management
- Private
- State
- Forest Service
- Other



Coordinate System: NAD 1983 UTM Zone 12N
Map Scale: 1:107,610, 1 inch = 8,968 feet



TRANSPORTATION