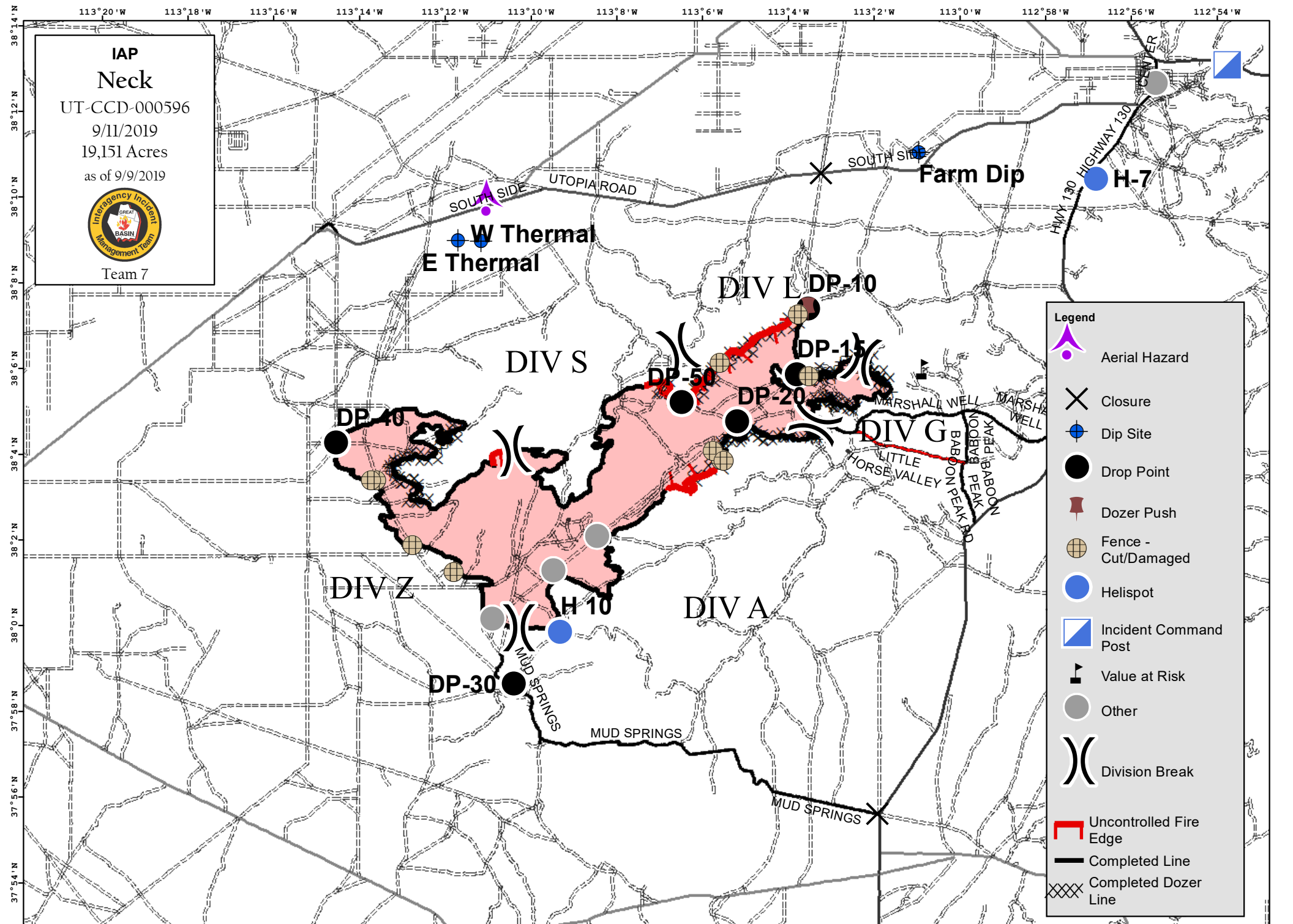


113°20'W 113°18'W 113°16'W 113°14'W 113°12'W 113°10'W 113°8'W 113°6'W 113°4'W 113°2'W 113°0'W 112°58'W 112°56'W 112°54'W

IAP
Neck
UT-CCD-000596
9/11/2019
19,151 Acres
as of 9/9/2019



Team 7



Legend

- Aerial Hazard
- Closure
- Dip Site
- Drop Point
- Dozer Push
- Fence - Cut/Damaged
- Helispot
- Incident Command Post
- Value at Risk
- Other
- Division Break
- Uncontrolled Fire Edge
- Completed Line
- Completed Dozer Line

Coordinate System: GCS WGS 1984
Map Scale: 1:200,000, 1 inch = 16,667 feet

