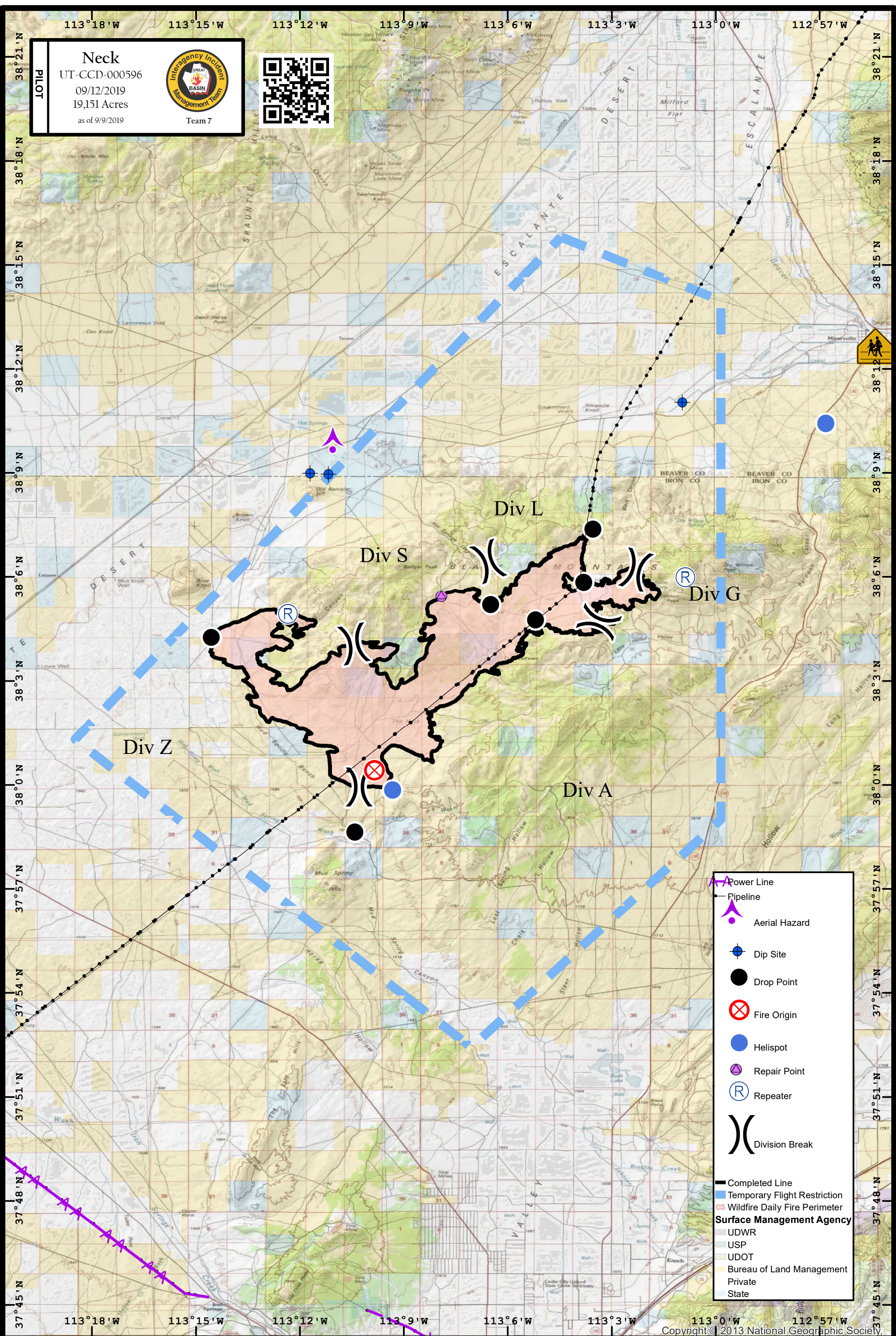


Neck
 UT-CCD-000596
 09/12/2019
 19,151 Acres
 as of 9/9/2019

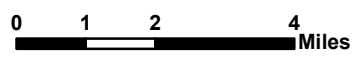


Team 7



- Power Line
- Pipeline
- Aerial Hazard
- Dip Site
- Drop Point
- Fire Origin
- Helispot
- Repair Point
- Repeater
- Division Break
- Completed Line
- Temporary Flight Restriction
- Wildfire Daily Fire Perimeter
- Surface Management Agency**
- UDWR
- USP
- UDOT
- Bureau of Land Management
- Private
- State

Coordinate System: GCS WGS 1984
Map Scale: 1:175,000, 1 inch = 14,583 feet



FeatureCategory	Label	Comments	Latitude	Longitude
Aerial Hazard		Tower <200'	N38° 9.785'	W113° 11.047'
Dip Site	W Thermal	W Thermal	N38° 8.992'	W113° 11.702'
Dip Site	E Thermal	E Thermal	N38° 8.968'	W113° 11.172'
Dip Site	Farm Dip	Farm Dip	N38° 11.044'	W113° 0.962'
Drop Point	DP-30	IA supply cache (needs to be shuttled to camp) contains supplies from Cedar City/Color Country	N37° 58.640'	W113° 10.406'
Drop Point	DP-15		N38° 5.857'	W113° 3.800'
Drop Point	DP-20		N38° 4.763'	W113° 5.193'
Drop Point	DP-10		N38° 7.388'	W113° 3.540'
Drop Point	DP-40		N38° 4.263'	W113° 14.547'
Helispot	H 10	H 10	N37° 59.861'	W113° 9.321'
Helispot		Proposed	N38° 6.183'	W113° 2.298'
Incident			N38° 13.078'	W112° 53.769'
Command Post			N38° 4.938'	W113° 12.342'
Repeater	C-11		N38° 6.002'	W113° 0.873'
Repeater	C-4			