

Nethker Fire

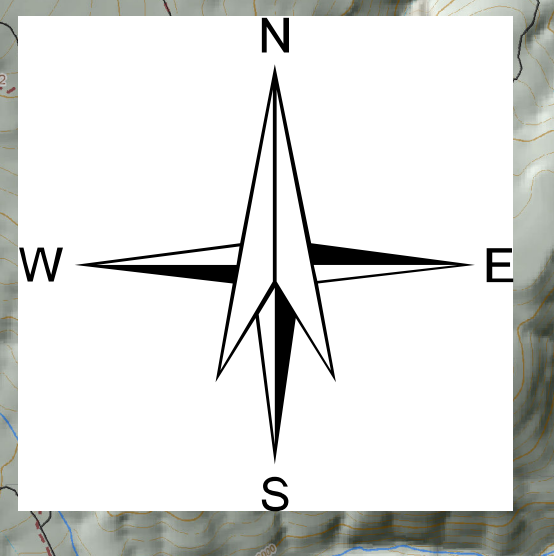
ID-PAF-000500

Air Ops Map

NAD 83 11N

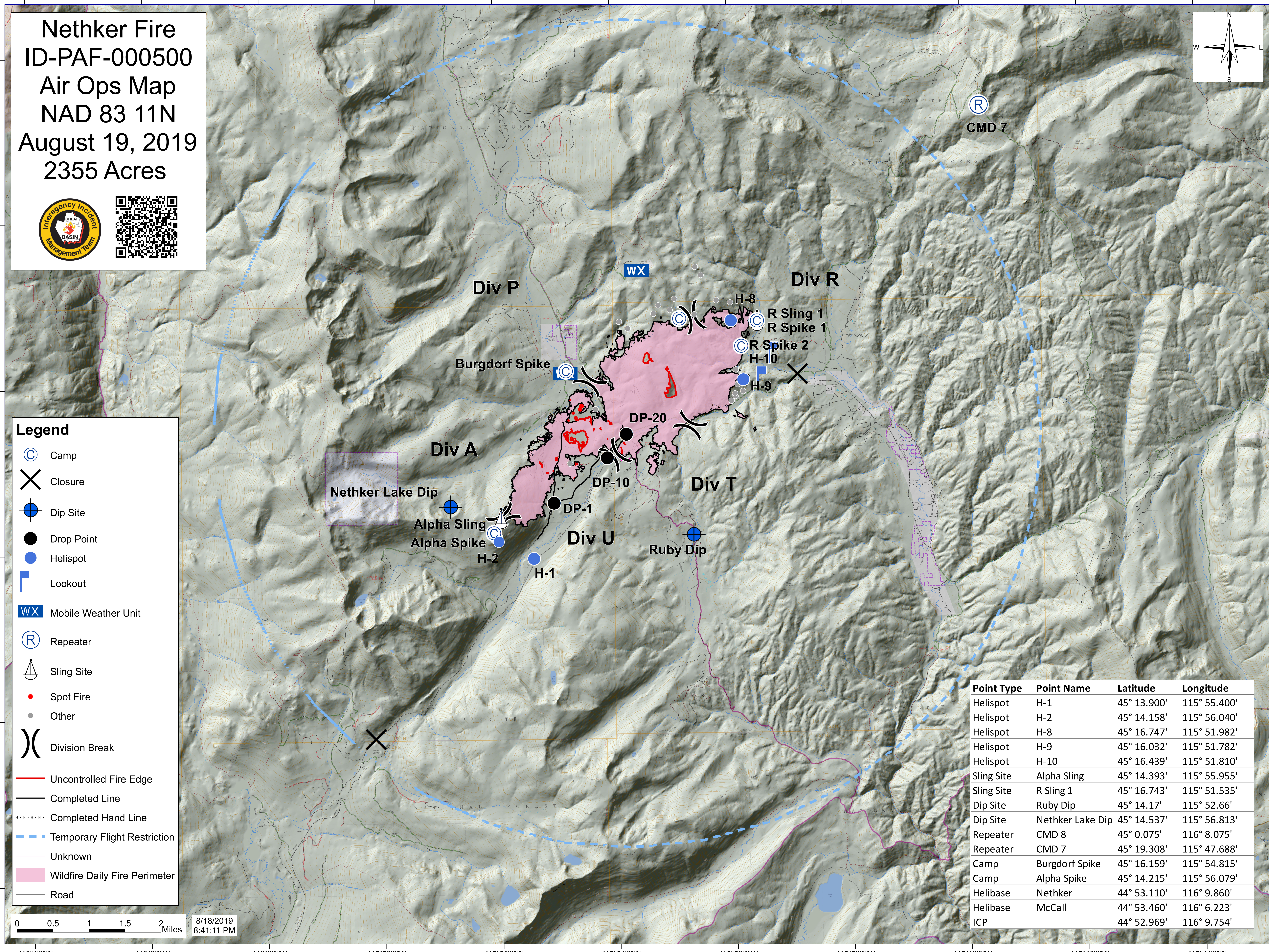
August 19, 2019

2355 Acres



Legend

- Camp
- Closure
- Dip Site
- Drop Point
- Helispot
- Lookout
- Mobile Weather Unit
- Repeater
- Sling Site
- Spot Fire
- Other
- Division Break
- Uncontrolled Fire Edge
- Completed Line
- Completed Hand Line
- Temporary Flight Restriction
- Unknown
- Wildfire Daily Fire Perimeter
- Road



Point Type	Point Name	Latitude	Longitude
Helispot	H-1	45° 13.900'	115° 55.400'
Helispot	H-2	45° 14.158'	115° 56.040'
Helispot	H-8	45° 16.747'	115° 51.982'
Helispot	H-9	45° 16.032'	115° 51.782'
Helispot	H-10	45° 16.439'	115° 51.810'
Sling Site	Alpha Sling	45° 14.393'	115° 55.955'
Sling Site	R Sling 1	45° 16.743'	115° 51.535'
Dip Site	Ruby Dip	45° 14.17'	115° 52.66'
Dip Site	Nethker Lake Dip	45° 14.537'	115° 56.813'
Repeater	CMD 8	45° 0.075'	116° 8.075'
Repeater	CMD 7	45° 19.308'	115° 47.688'
Camp	Burgdorf Spike	45° 16.159'	115° 54.815'
Camp	Alpha Spike	45° 14.215'	115° 56.079'
Helibase	Nethker	44° 53.110'	116° 9.860'
Helibase	McCall	44° 53.460'	116° 6.223'
ICP		44° 52.969'	116° 9.754'

0 0.5 1 1.5 2 Miles
8/18/2019 8:41:11 PM