

Helibase		
Name	Latitude	Longitude
Helibase	37° 39.527' N	109° 52.969' W

Helispot		
Name	Latitude	Longitude
H-10	37° 42.086' N	109° 53.264' W
H-11	37° 42.639' N	109° 53.785' W
H-20	37° 43.961' N	109° 51.818' W
H-21	37° 43.178' N	109° 50.769' W

Incident Command Post		
Name	Latitude	Longitude
ICP	37° 39.553' N	109° 53.158' W

Value at Risk		
Name	Latitude	Longitude
341 Rd. Cabins	37° 39.245' N	109° 51.120' W
Corral	37° 43.067' N	109° 50.736' W
Shed	37° 40.537' N	109° 49.617' W
Twin Springs Cabin	37° 40.924' N	109° 52.848' W
Ute Cabin	37° 40.615' N	109° 49.429' W

Water Source		
Name	Latitude	Longitude
Pumpkins	37° 43.363' N	109° 48.321' W

**Peavine Canyon Fire**  
 UT-MLF-009115  
**IAP Map**  
**Div A, G**  
 July 28, 2019  
 appx. 802 acres on July 26 1900 hr

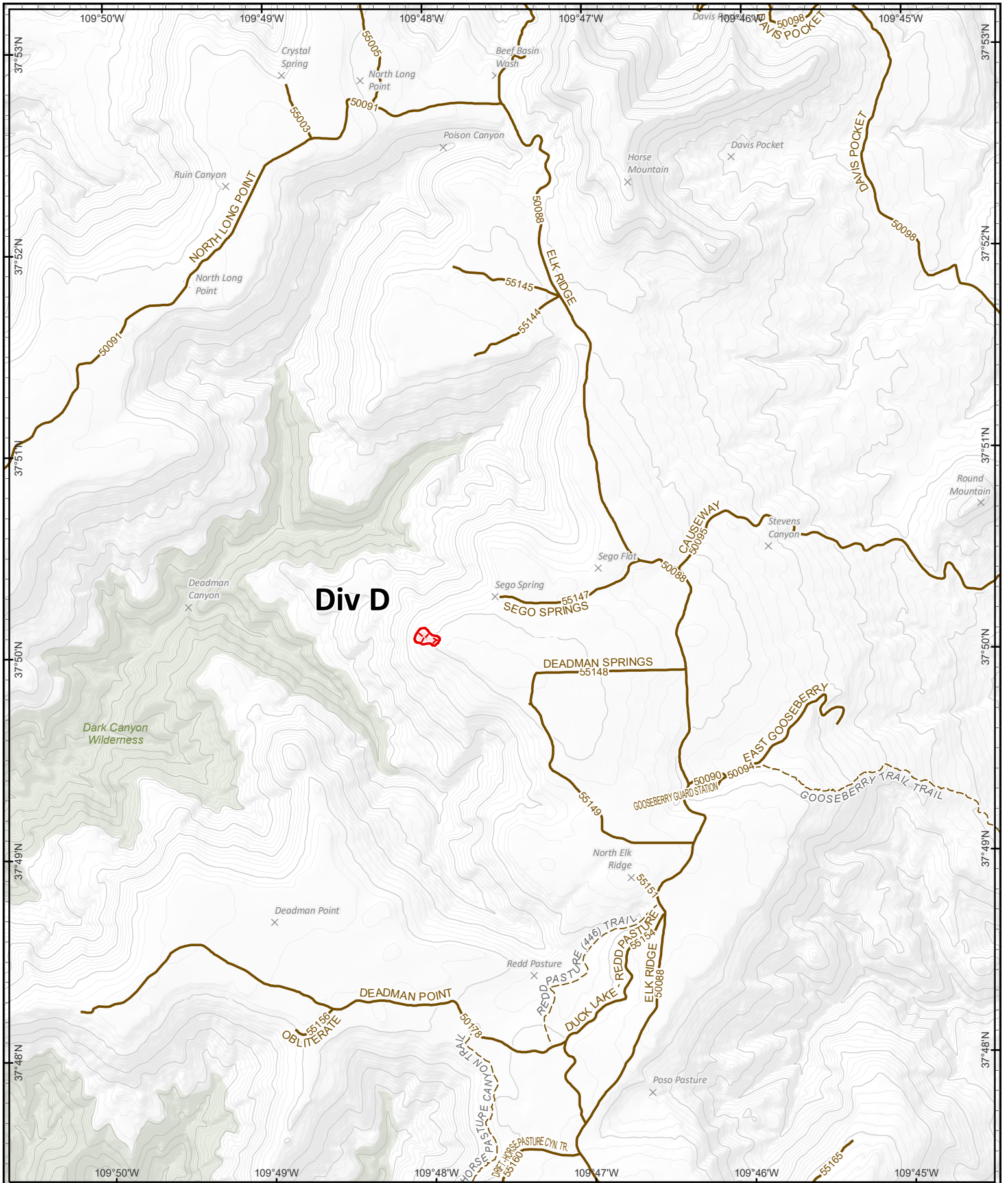

0 0.25 0.5  
 Miles  
 0 0.25 0.5  
 Kilometers

Projection: NAD83 UTM Zone 12  
 Lat-Long Grid Ticks: 1' minute interval

author: sooneyi date: 20190727 2128 hr  
 file: iap\_mlf\_009115\_001\_2019\_PeavineCanyon\_UTMLF009115\_001

**Peavine Canyon Mobile Maps**





**Poison Canyon Fire**  
 UT-MLF-009140  
**IAP Map**  
**Div D**  
 July 28, 2019  
 appx. 3 acres on July 27 1600 hr

- Uncontrolled Fire Edge
- Road
- Trail
- Dark Canyon Wilderness



0 0.25 0.5  
 Miles  
 0 0.25 0.5  
 Kilometers

Projection: NAD83 UTM Zone12  
 Lat-Long Grid Ticks: 1' minute interval

Peavine Canyon Mobile Maps

author: saeinyi date: 20190727 2125 hr  
 file: IAP\_overview\_8x11\_2019\_PoisonCanyon\_UTMLF009140.mxd