

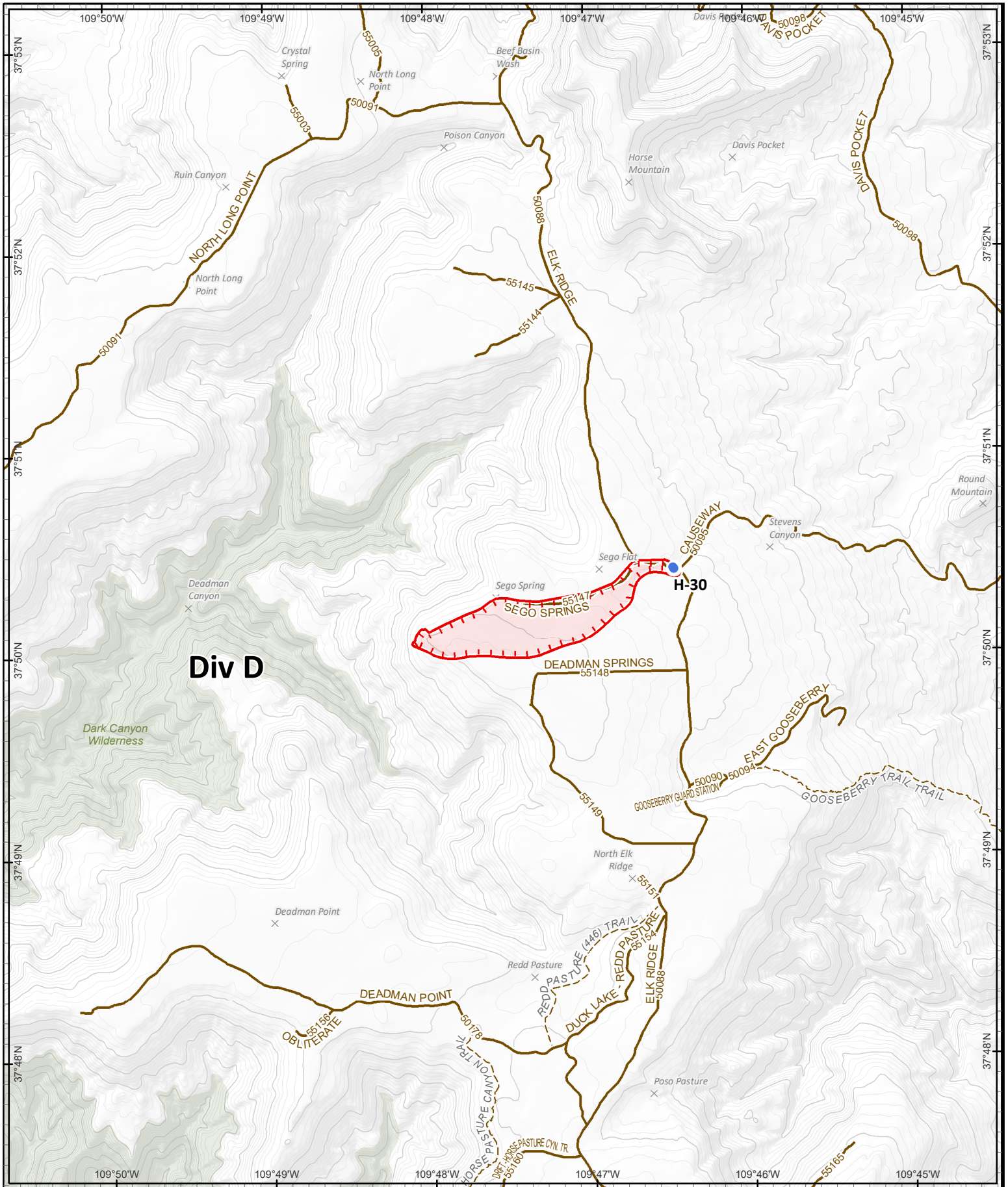
Helibase		
Name	Latitude	Longitude
Helibase	37° 39.527' N	109° 52.969' W
Helispot		
Name	Latitude	Longitude
H-10	37° 42.086' N	109° 53.264' W
H-11	37° 42.639' N	109° 53.785' W
H-20	37° 43.961' N	109° 51.818' W
H-21	37° 43.178' N	109° 50.769' W
H-30	37° 50.417' N	37° 50.417' W
Incident Command Post		
Name	Latitude	Longitude
ICP	37° 39.553' N	109° 53.158' W
Repeater		
Name	Latitude	Longitude
South Zone Portable	37° 43.949' N	37° 43.949' N
Value at Risk		
Name	Latitude	Longitude
341 Rd. Cabins	37° 39.245' N	109° 51.120' W
Corral	37° 43.067' N	109° 50.736' W
Shed	37° 40.537' N	109° 49.617' W
Twin Springs Cabin	37° 40.924' N	109° 52.848' W
Ute Cabin	37° 40.615' N	109° 49.429' W
Water Source		
Name	Latitude	Longitude
Pumpkins	37° 43.363' N	109° 48.321' W

Peavine Canyon Fire  
 UT-MLF-009115  
**IAP Map**  
 Div A, G  
 July 30, 2019  
 appx. 1,250 acres on July 28 1600 hr

Division Break  
 Repeater  
 Helispot  
 Internet Access  
 Value at Risk  
 Water Source  
 Uncontrolled Fire Edge  
 Completed Hand Line  
 Road  
 Trail  
 Project Area  
 Planning Area  
 Dark Canyon Wilderness

0 0.25 0.5 Miles
   
 Projection: NAD83 UTM Zone12
   
 Lat-Long Grid Ticks: 1' minute interval
   
 author: salem Date: 20190729 2107 H
   
 file: iap\_0012\_part\_0019\_PeavineCanyon\_UTM12\_009115\_0.mxd

Incident Maps



Poison Canyon Fire  
 UT-MLF-009140  
**IAP Map**  
**Div D**  
 July 30, 2019  
 appx. 185 acres on July 28 1600 hr

- Helispot
- Uncontrolled Fire Edge
- Road
- H—H Completed Hand Line
- Trail
- Dark Canyon Wilderness



**Incident Maps**

0 0.25 0.5  
 Miles

Projection: NAD83 UTM Zone12  
 Lat-Long Grid Ticks: 1' minute interval

author: salemty date: 20190729 2103 hr  
 file: iap\_0423\_part\_3020\_PoisonCanyon\_UTM12F009115\_0.mxd